

Canada from Coast to Coast

St. John's, Nfld.—The iron mines at Wabana, which were closed early this year as the result of the cancellation of German contracts for ore after the French occupation of the Ruhr, are again in operation. An agreement has been reached between the Newfoundland Government and the British Empire Steel Corporation, whereby the latter in consideration of the waiving of the export duty of 25 cents per ton imposed on this ore for the current year, agrees to provide employment for 1,400 men during February and March, or 1,500 in April and May, and to resume normal working of the mines after June.

St. John, N.B.—The port received its first loading was broken recently by the steamer Salsedel, putting 399,000 bushels aboard in 25 1/2 hours, working 10 days. She arrived at 5 o'clock in the evening of Sunday, February 18, and sailed on Saturday afternoon, fitting out completely and loading in the meantime.

Three Rivers, Que.—The district of the International Paper Co. is said to have a total production of 250,000 tons of paper in 1930, an increase of 100,000 tons over the production of 1929. The company is planning to install the new production plant in 1931.

Calgary, Alta.—Alberta's total coal production last year was 5,476,432 tons, according to a statement issued by the Provincial Department of Mines. Of this quantity 1,419,942 tons were sold in Alberta, 1,989,789 in other Canadian provinces and 1,066,701 in the United States. The total production was 19,227 tons in excess of that of 1929.

Victoria, B.C.—Valued at \$11,500,000, the British Columbia salmon fishery is reported to be the most important source of revenue to the Provincial Department of Fisheries. These figures have been compiled only on four occasions since statistics have been compiled during the past twenty-six years and the most recent was in 1919, when the total was 1,393,150 cases.

First Payment Made on British Debt. Terms for Funding Debt Include Bond Issue, With Interest Payable Half-Yearly.

A dispatch from London says—The British Treasury has announced that the terms regarding the funding agreement with the United States, England will make a cash payment of \$1,120,000,000 to cover a part of the debt of \$1,120,000,000. This total will be covered by a bond issue of \$1,120,000,000.

Travel in Canada Increase. A dispatch from Ottawa says—The Canadian Tourist Association reports that the number of tourists from the United States and other foreign countries who visited Canada last year was 1,000,000, an increase of 20 per cent over the number of tourists who visited Canada in 1929.

Tafel Gets \$75,000 for Services as C.T.R. Arbitrator. A dispatch from Ottawa says—The Canadian Transport and Trade Commission has awarded a contract to the Tafel Brothers for the arbitration of disputes between the Canadian Transport Railway and the Canadian Transport Association.

St. John's, Nfld.—The iron mines at Wabana, which were closed early this year as the result of the cancellation of German contracts for ore after the French occupation of the Ruhr, are again in operation.

St. John, N.B.—The port received its first loading was broken recently by the steamer Salsedel, putting 399,000 bushels aboard in 25 1/2 hours, working 10 days.

Three Rivers, Que.—The district of the International Paper Co. is said to have a total production of 250,000 tons of paper in 1930, an increase of 100,000 tons over the production of 1929.

Calgary, Alta.—Alberta's total coal production last year was 5,476,432 tons, according to a statement issued by the Provincial Department of Mines.

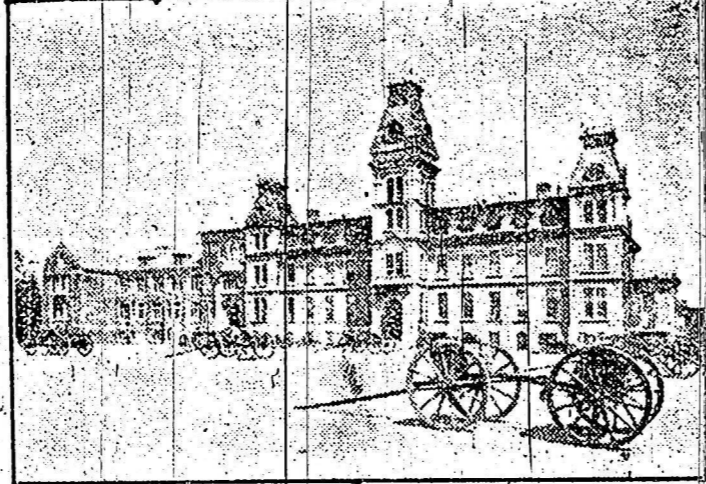
Victoria, B.C.—Valued at \$11,500,000, the British Columbia salmon fishery is reported to be the most important source of revenue to the Provincial Department of Fisheries.

First Payment Made on British Debt. Terms for Funding Debt Include Bond Issue, With Interest Payable Half-Yearly.

A dispatch from London says—The British Treasury has announced that the terms regarding the funding agreement with the United States, England will make a cash payment of \$1,120,000,000 to cover a part of the debt of \$1,120,000,000.

Travel in Canada Increase. A dispatch from Ottawa says—The Canadian Tourist Association reports that the number of tourists from the United States and other foreign countries who visited Canada last year was 1,000,000, an increase of 20 per cent over the number of tourists who visited Canada in 1929.

Tafel Gets \$75,000 for Services as C.T.R. Arbitrator. A dispatch from Ottawa says—The Canadian Transport and Trade Commission has awarded a contract to the Tafel Brothers for the arbitration of disputes between the Canadian Transport Railway and the Canadian Transport Association.



A FAMOUS CANADIAN INSTITUTION. A notable Canadian educational institution which gives about 1000 young men and women the opportunity to receive a liberal education in the Royal Military College at Kingston. With a staff of distinguished military officers and educationists, it has turned out some of the country's best military engineers of the day.

THE SUIT CASE TEACHER

BY W. M. MORRIS. There are some teachers in the rural schools of Ontario, who are exactly ten minutes to nine on Monday morning, with all their belongings packed in a suitcase, and shake the dust of the community off their feet as soon after four o'clock on Friday evening as it is possible for them to get away.

One factor in securing teachers for rural schools who will identify themselves with rural life, is the teacher's home. The Government of Saskatchewan makes a grant of \$200 to these teachers to build a house for the teacher. The residence which has been erected here cost from \$400 to \$1,800 and in some districts it is found that a building is an absolute necessity.

The dramatic episode in the desolate Valley of the Kings holds the public attention more perhaps because of its historical possibilities than for the glitter and pomp of its excavations. The great question has concerned Tutankhamun's patrilial connection with the Exodus. Scholars have agreed reluctantly that he was not the man.

Therefore, hope turns to another quarter of the East, where British and French archeologists will delve this spring for the ancient City of David, below the foundations of the City of Jerusalem.

Many of the archeological treasures unearthed thus far have been in indirect confirmation of Biblical history, dating with matters mentioned in the Bible narrative.

The incident of that ancient is the material fact of evidence has been established in the archeological confirmation of Biblical history, dating with matters mentioned in the Bible narrative.

The incident of that ancient is the material fact of evidence has been established in the archeological confirmation of Biblical history, dating with matters mentioned in the Bible narrative.

The incident of that ancient is the material fact of evidence has been established in the archeological confirmation of Biblical history, dating with matters mentioned in the Bible narrative.

The incident of that ancient is the material fact of evidence has been established in the archeological confirmation of Biblical history, dating with matters mentioned in the Bible narrative.

The incident of that ancient is the material fact of evidence has been established in the archeological confirmation of Biblical history, dating with matters mentioned in the Bible narrative.

The incident of that ancient is the material fact of evidence has been established in the archeological confirmation of Biblical history, dating with matters mentioned in the Bible narrative.

The incident of that ancient is the material fact of evidence has been established in the archeological confirmation of Biblical history, dating with matters mentioned in the Bible narrative.

The incident of that ancient is the material fact of evidence has been established in the archeological confirmation of Biblical history, dating with matters mentioned in the Bible narrative.

The incident of that ancient is the material fact of evidence has been established in the archeological confirmation of Biblical history, dating with matters mentioned in the Bible narrative.

Natural Resources Bulletin

The Natural Resources Intelligence Service of the Department of the Interior at Ottawa says—

It is not too early to plan for summer vacation. Where to spend it is the question. Ontario has many beauty spots, where lake and river, with natural scenery and varying degrees of solitude are available at the wish of the holiday-maker.

To those who wish to spend their vacation in travel, the mountain parks of the west and the seaside resorts of the Maritime Provinces offer many attractions. The latter provinces are making a united effort to attract tourists this year.

David's City.

King Tutankhamun's tomb, with all its gorgeous plunder of gold and precious stones, has yet to yield its most precious secrets—the jottings of un-guessed history which the Egyptian scribes will write months hence.

Therefore, hope turns to another quarter of the East, where British and French archeologists will delve this spring for the ancient City of David, below the foundations of the City of Jerusalem.

Many of the archeological treasures unearthed thus far have been in indirect confirmation of Biblical history, dating with matters mentioned in the Bible narrative.

The incident of that ancient is the material fact of evidence has been established in the archeological confirmation of Biblical history, dating with matters mentioned in the Bible narrative.

The incident of that ancient is the material fact of evidence has been established in the archeological confirmation of Biblical history, dating with matters mentioned in the Bible narrative.

The incident of that ancient is the material fact of evidence has been established in the archeological confirmation of Biblical history, dating with matters mentioned in the Bible narrative.

The incident of that ancient is the material fact of evidence has been established in the archeological confirmation of Biblical history, dating with matters mentioned in the Bible narrative.

The incident of that ancient is the material fact of evidence has been established in the archeological confirmation of Biblical history, dating with matters mentioned in the Bible narrative.

The incident of that ancient is the material fact of evidence has been established in the archeological confirmation of Biblical history, dating with matters mentioned in the Bible narrative.

The incident of that ancient is the material fact of evidence has been established in the archeological confirmation of Biblical history, dating with matters mentioned in the Bible narrative.

The incident of that ancient is the material fact of evidence has been established in the archeological confirmation of Biblical history, dating with matters mentioned in the Bible narrative.

The incident of that ancient is the material fact of evidence has been established in the archeological confirmation of Biblical history, dating with matters mentioned in the Bible narrative.

The incident of that ancient is the material fact of evidence has been established in the archeological confirmation of Biblical history, dating with matters mentioned in the Bible narrative.

The incident of that ancient is the material fact of evidence has been established in the archeological confirmation of Biblical history, dating with matters mentioned in the Bible narrative.

The incident of that ancient is the material fact of evidence has been established in the archeological confirmation of Biblical history, dating with matters mentioned in the Bible narrative.

UNDERGROUND RIVERS IN CANADA'S NORTHLAND

Departmental Officer Locating a Bison Herd, Notes Unique Geographical Feature.

The wonders of Canada's northland whole city block. This formation extends from Peace Point, on the Peace River, for a distance of 100 miles to L.S. of the Natural Resources Intelligence Service of the Department of the Interior, in tracing the limits of this formation alone carries the dry valleys, the habitat of the wild wood bison. The Nynning River (the name in last season, discovered that the north Chipewyan speak "Nynning")

The formation which permits of this course is clearly supported all the way peculiar condition, consists of time-worn, the intervening ridges by a dry stone strata, overlying beds of gravelly sand, which is a deposit of glacial origin.

The traveling salesman shivered all night in his room in the village hotel. In the morning, early for him, he roused and sought the morning office stove.

Treating wool or woolen goods with a newly discovered chemical called "Eulan," which is both oil-proof and colorless, makes the goods highly impervious to water.

The two million surplus women in the British Isles evidently have their eye on the rural districts of Australia. The first contingent of fifty young Englishwomen organized as "Home Companions" sailed for Australia this month.

Manitoba wheat—No. 1 Northern, 1930. The price of wheat in Manitoba is expected to rise in the coming year.

Manitoba oats—Northern, 1930. The price of oats in Manitoba is expected to rise in the coming year.

Manitoba barley—Northern, 1930. The price of barley in Manitoba is expected to rise in the coming year.

Manitoba corn—No. 2 yellow, 1930. The price of corn in Manitoba is expected to rise in the coming year.

Manitoba soybeans—Northern, 1930. The price of soybeans in Manitoba is expected to rise in the coming year.

Manitoba flax—Northern, 1930. The price of flax in Manitoba is expected to rise in the coming year.

Manitoba timothy—Northern, 1930. The price of timothy in Manitoba is expected to rise in the coming year.

Manitoba alfalfa—Northern, 1930. The price of alfalfa in Manitoba is expected to rise in the coming year.

Manitoba clover—Northern, 1930. The price of clover in Manitoba is expected to rise in the coming year.

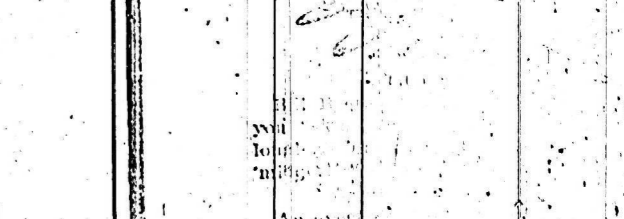
Manitoba lucerne—Northern, 1930. The price of lucerne in Manitoba is expected to rise in the coming year.

Manitoba vetch—Northern, 1930. The price of vetch in Manitoba is expected to rise in the coming year.

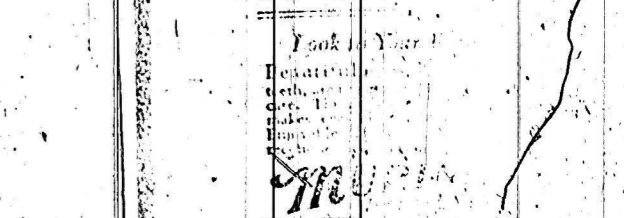
Manitoba sainfoin—Northern, 1930. The price of sainfoin in Manitoba is expected to rise in the coming year.



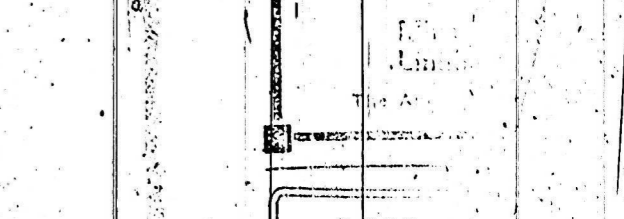
By the co-operation of the Dominion Fisheries authorities and the General Passenger Agent of the Canadian National Railways, a shipment of 250,000 nickered fry has been planted in lake Madge in the Duck Mountain forest reserve.



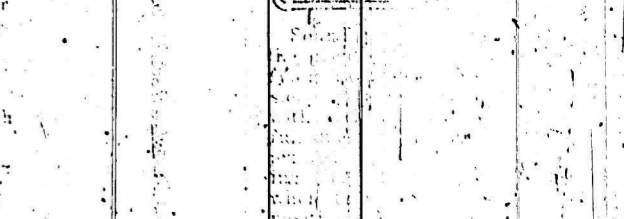
The traveling salesman shivered all night in his room in the village hotel. In the morning, early for him, he roused and sought the morning office stove.



Treating wool or woolen goods with a newly discovered chemical called "Eulan," which is both oil-proof and colorless, makes the goods highly impervious to water.



The two million surplus women in the British Isles evidently have their eye on the rural districts of Australia. The first contingent of fifty young Englishwomen organized as "Home Companions" sailed for Australia this month.



Manitoba wheat—No. 1 Northern, 1930. The price of wheat in Manitoba is expected to rise in the coming year.



Manitoba oats—Northern, 1930. The price of oats in Manitoba is expected to rise in the coming year.



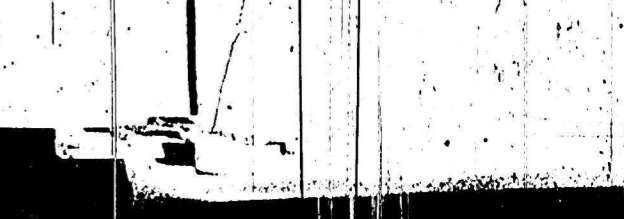
Manitoba barley—Northern, 1930. The price of barley in Manitoba is expected to rise in the coming year.



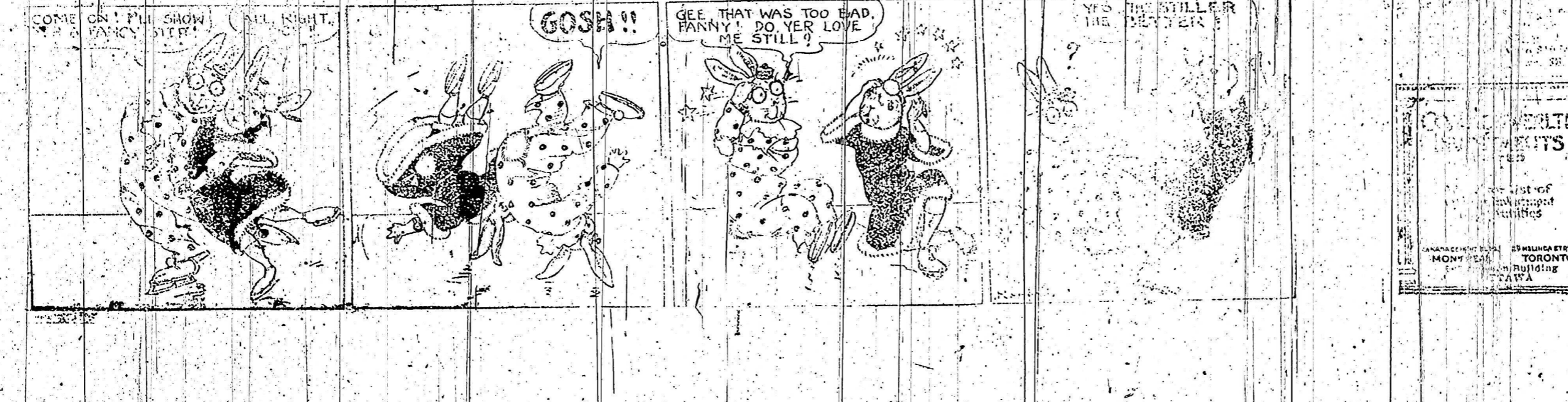
Manitoba corn—No. 2 yellow, 1930. The price of corn in Manitoba is expected to rise in the coming year.



Manitoba soybeans—Northern, 1930. The price of soybeans in Manitoba is expected to rise in the coming year.



IN RABBITBORO



COME ON! PULL SHOW... GOSH!!... GEE, THAT WAS TOO BAD, RANNY! DO YOU LOVE ME STILL?... YES! THE MILLER... DEETER...

MANITоба WHEAT... MANITоба OATS... MANITоба BARLEY... MANITоба CORN... MANITоба SOYBEANS... MANITоба FLAX... MANITоба TIMOTHY... MANITоба ALFALFA... MANITоба CLOVER... MANITоба LUCERNE... MANITоба VETCH... MANITоба SAINFOIN...