

BILIZING" WITISH WOMEN
... FACULTY AFTER-WAR
... IN OLD LAND
... Department of Ministry of
... Problem of Making
... Content With \$3.
... 1,000,000 work
... the great task
... special department of the
... Labor, says a London
... Women predominate in
... organization. One of the
... of their problems will
... satisfy a munitions worker
... earning from \$18 to \$20
... that she is called on to
... former task as a family
... from \$3 to \$3.25 a week.
... officials realize that
... the hard problems con
... reconstruction period
... these girls and women
... some of the freedom
... enjoyed as munition work
... submit to more exacting
... They are appealing to
... to adjust themselves to
... of things as best they
... willing to make sacri
... reconstruction as they did

The Markdale STANDARD

Published on Wednesday by
C. W. RUTLEDGE,
Markdale, Ontario.

SUBSCRIPTIONS—to subscribers in Canada, \$1.50 a year; in the United States \$2.00. Twenty-five cents added when not paid in advance. No paper returned until all arrears are paid, except at the option of the publisher.

ADVERTISING RATES.
Display Advertisements are charged at the following rates per line for each insertion.
Year Contract 10c
Six Months Contract 10c
Three Months Contract 12c
One Month Contract 14c
Weekly Contract 15c
Daily Contract 18c
Special position 10 per cent. ad-
ditional.

All Advertisements under 1 inch charged as one inch.
Professional cards of 1 inch or less, \$5 per annum, or \$3 for six months.
Reading Notices inserted in local papers, 10c per line to transient ad-
vertisers and 5c per line to contract
advertisers.

Real Estate
Listings of Farms and Real Estate
for sale, etc. exceeding 1 inch, ad-
dressed \$1 for first month and 50c
for each additional month.
Traged, Lost, Found Notices, etc.,
exceeding 1 inch, 50c for first
month and 25c for each subsequent
month.
Legal Notices, such as Legal No-
tices, etc., 10c per line for first
month and 5c per line for each
subsequent month.
Business Directory, one cent a word,
in 25 cents.
Notices of Special Instructions
to be inserted subject to the
approval of the Publishers.
All Advertisements subject to the
discretion of the Publishers.
Information covering Special Con-
ditions supplied promptly upon
request.
Correspondence intended for the
Standard should be addressed to The
Standard, Markdale.

BUSINESS DIRECTORY
R. J. SPROULE,
Conveyancer, Appraiser,
Valuator and Money Lender.
Mortgages, Leases and Wills
drawn and Valuations made on
order. Charges very low.
R. J. Sproule, Fishers.

LEGAL
McCULLOUGH,
Solicitor, etc. Offices
Markdale. Money to
lend.

CAS RANEY & HENRY
Barristers, Solicitors, Etc.
Lindsay Block, Markdale.
Traders Bank Bldg., Toronto
L. Laess, K.C., W. E. Raney,
W. D. Henry, B.A.

DENTISTRY
J. A. MacARTHUR,
Dentist
100 Arley Block (over Bowes
the store). Entrance at south-
west corner of building, Toronto

G. CAMPBELL
(L.D.S., D.D.S.)
Dentist, Graduate of Ontario
Dentistry and University
Office over the post-office,
9 a.m. to 5 p.m. Parties
over hours please call on resi-
dence in reception room.

WATERLAL
A. F. & A. M.
Lodge, No. 490, G.R.C.,
meets in Masonic Hall, Mc-
Donald, on Tuesday evening of
the full moon every month.
Members cordially invited.
W. M.: Bam Brady, Secre-
tary.

W. C. P. No. 399.
Canadian, Canadian Order
No. 399, meets sec-
ondly in the month of January
at 8 o'clock. A. Jackson, Chief
of Honor. S. Irwin, Recorder.

W. C. P. No. 327.
L.O.O.P.
Meet and third Wednesday of
the month at 7:30 p.m. in their hall,
100 Arley Block.
Visiting brethren always
welcome.
W. M.: S. Irwin, G. G.; Alex.
C. Sec.

W. C. P. No. 1045.
L.O.L., No. 1045,
meets on or before full moon in
the month of January.
Visiting brethren always
welcome.
W. M.: S. Irwin, G. G.; Alex.
C. Sec.

B. H. WALDEN
Auctioneer for the County
of Grey. All sales promptly attend-
ed to. Farm sales a specialty. Ar-
rangements for sales may be made at
Standard Office, or B. H. Walden,
Markdale.

MARKDALE STANDARD

VOL. 39 MARKDALE, ONT., WEDNESDAY, JAN. 29, 1919. Established in 1875

MISCELLANEOUS.
J. W. PATTON, J.P.
Rocklyn, Ont. Issuer of Marriage
Licenses. Business strictly confi-
dential.

PATENTS
PROMPTLY SECURED
In all countries. Ask for our INVENTOR
ADVISER, which will be sent free.
MARION & MARION,
204 University St., Cor. St. Catharines.

DR. DE VAN'S FRENCH PILLS
A French
Pill for Women. 55¢ a box or three for
\$1.50. Sold at all Drug Stores, or mailed to any
address on receipt of price. Free Booklet, 25c.
St. Catharines, Ontario.

HOSPIRINOL FOR MEN.
Remo-
ves Urinary, Nervous and Brain Incessant "Crazy
Cures" for all kinds of Urinary, Nervous and Brain
Diseases. 25¢ a box, or by mail on receipt
of price. Free Booklet, 25c. St. Catharines,
Ontario.

**His Majesty Presents Medals to
Colonel Peck and Sergeant
Merrifield.**

London, Jan. 27.—Col. Cyrus West-
ley Peck, of the 16th Manitoba Regi-
ment, and Sgt. William Merrifield,
of the 4th Central Ontario Regiment,
on Sunday visited Sandringham,
where King George is in residence,
and received at the hands of his Ma-
jesty the Victoria Cross.

Col. Peck showed conspicuous brave-
ry and skillful handling of his men
in an attack under intense fire at
Cagnicourt on September 2. In a
critical position and over ground
swept by machine-gun fire he recon-
noitred the machine-gun position, and
was enabled to direct and assure the
success of his brigade.

In the attack Sgt. Merrifield at-
tacked two machine-gun emplace-
ments single-handed at Abancourt on
October 1, killing all the occupants.
He was twice severely wounded in the
attack. His showed the highest valor
and leadership and exceptionally dis-
tinguished himself. On previous oc-
casions this is described as having
shown most conspicuous bravery, ini-
tiative and devotion to duty. At Arras
on September 2, when under a perfect
half of bullets and bombs he led a
tank to an entirely successful attack
upon a machine-gun nest that was
holding up his battalion.

VILLAGES FOR THE WOUNDED
Britain Building Houses for Medical
Care and Training of Soldiers.

A new village, one of the by-pro-
ducts of the war, is about to rise near
Andover, in Hampshire, says an Eng-
lish newspaper. It is the first of the
villages which the Ministry of Pensi-
ons intends to build for the medi-
cal treatment and training of disabled
men.

The actual site selected by the Vil-
lage Centres Council is in Enham.
The estate covers an area of over a
thousand acres, with accommodation for
150 men. When the village has
been completed there will be room
for a thousand people, who will re-
ceive simultaneous treatment and
training to fit them for various forms
of work, as far as their disabilities
will permit. A hundred thousand
pounds is required to put the scheme
into full swing.

Later on, it is hoped to establish
these villages in a number of differ-
ent centres, and they may go a long
way towards solving one of the most
serious after-war problems.

PEACE CONGRESS
Paris, Jan. 27.—The Peace Confer-
ence to-day made a distinct gain when
the nineteen small powers gave full
adhesion to the organization formu-
lated by the five great powers, thus
securing a united front of the great
and small powers at the outset of the
work on the main subjects before the
members of the commission.

Unskilled laborers in Japan receive
65 cents an hour.

**The Highest Price
PAID FOR
RAW FURS**
Try once and you are assured of
satisfaction.
ABBIE FUR COMPANY
310 St. Paul W. Montreal, P.Q.
Reference: Bank of Hochelaga, St.
Henry.
In business for 32 years.

Farm Crop Queries

Conducted by Professor Henry G. Bell
The object of this department is to place at the
service of our farm readers the advice of an acknowledged
authority on all subjects pertaining to soils and crops.
Address all questions to Professor Henry G. Bell, in
care of The Wilson Publishing Company, Limited, Toronto,
and answers will appear in this column in the order in
which they are received. When writing kindly mention
this paper. As space is limited it is advised that im-
mediate reply is necessary that a stamped and addressed
envelope be enclosed with the question, when the answer
will be mailed direct.

R. C.—Will you kindly explain in
what way muck soil differs from up-
land and the best way to fertilize
muck land?

Answer:—Muck soil differs from up-
land soil in many ways. The upland soil
is the product of weathering, both the
weathering of rocks and of vegeta-
tion that has fallen on them, while
muck soil is composed chiefly of de-
caying plant matter, whose decay has
been greatly hindered, in many cases
by water standing on the soil. On
examination, virgin upland soils con-
tain a medium amount of nitrogen,
and if clay predominates, contain a
medium amount of phosphoric acid
and potash. Muck soils on the other
hand, contain a large amount of nitro-
gen in the available form, a small
supply of phosphoric acid and a very
small supply of potash. Much soils
are therefore best adapted for gar-
den truck, which is harvested when
the plant has made greatest vegeta-
tive growth or for hay crops. Speak-
ing generally muck soil is slow in
spring and crops growing on it tend
to prolong their growth and do not
ripen in sufficient time to escape
frost. If potash-loving crops such as
potatoes, sugar beets, etc., are grown,
it is a tendency for the soil to be
poorly filled out, and the plants to
be susceptible to diseases. In fertiliz-
ing for general crops on muck soil,
use a fertilizer with a small amount
of nitrogen in order to start the crops
off vigorously, a large amount of
phosphoric acid—10% to 12%—
and a medium to abundant supply of
potash, under normal conditions as
high as 3 to 5%. This, of course,
should be worked into the soil thor-
oughly at the time the crop is being
planted.

M. P.—What is the cash value of
well rotted manure, by the manure
spreaders load, allowing seventy
bushels for a load? This being well
rotted stable manure.

Answer:—It is very hard to state
the cash value of well rotted manure,
by the manure spreader load. If the
manure has been carried no more
than 5 to 6 lb. of nitrogen to the
ton, probably not more than 2 or 3 lb.
of phosphoric acid, and 4 or 5 lbs. of
potash. It is not fair to value this at
the price you would have to pay for
it in fertilizers, because in fertilizers
these plant foods are in a readily
available and concentrated form,
whereas in manure the probability is
that the material which remains con-
tains a considerable amount of plant
food in the unavailable form. Well-
kept manure is highly valuable, but
it should always be kept in mind the
quality of manure is directly depend-
ent upon its storage, and the handling
of the farm animals from which it
was obtained. Director Chas. D.
Woods of Maine, says as follows:—
"Plant food in manure is not so quick-
ly used so completely available as in
the better forms of chemicals, but
after much balancing of pros and
cons, it has become generally accept-
ed that the commercial value of the
plant food contained in the only de-
fined thing about a farm, manure, by
which we can measure its agricultural
and commercial value."

His opinion is supplemented by that
of Director Thome, for 25 years

Requirements for Given Steers at Different Periods of Fattening.

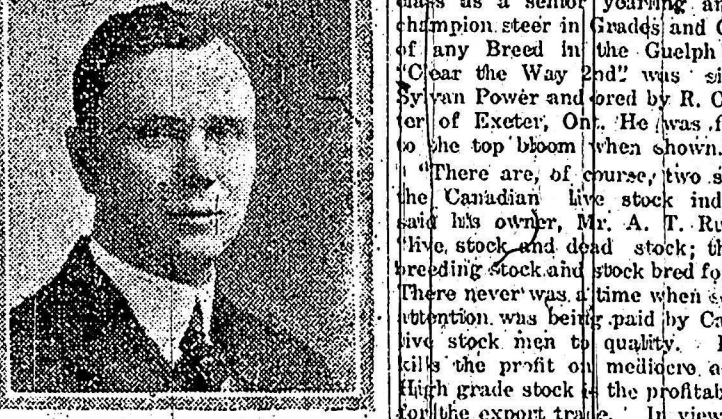
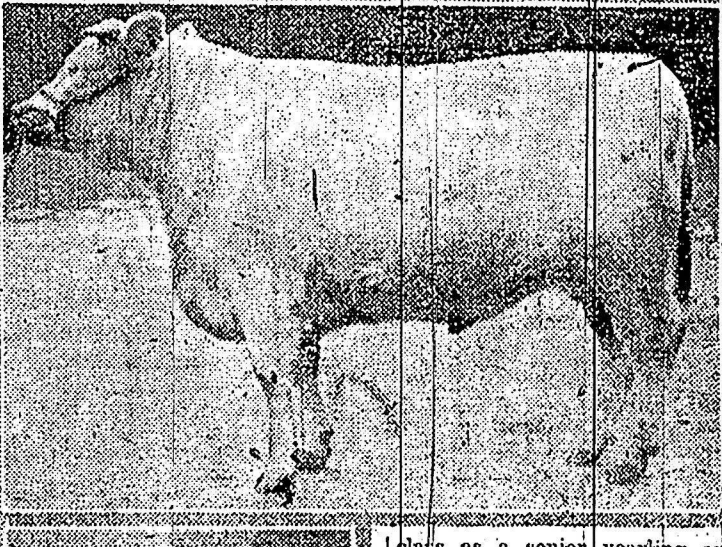
	Av. Wt. during period	Dry matter	Digestible crude protein	Total Dig. nutrients	Nutritive ratio
First 50 days	1,020	22.4-25.5	2.04-2.35	18.4-20.4	1:7.0-1:7.8
Second 50 days	1,140	23.9-27.4	2.17-2.62	19.4-22.2	1:7.0-1:7.8
Third 50 days	1,260	22.7-27.7	2.27-2.65	20.4-23.3	1:7.0-1:7.8

**BOLSHEVIKI
THREATEN ALLIES**
Thin Columns of Allied Forces
Made Detour to Evade
Large Enemy Body.
Archangel, Jan. 26.—The Bolsheviki
are now on the offensive with in-
fantry or artillery, or both, against
four of the seven thin columns of the
allies and Russians which have pene-
trated southward through the frozen
forest swamps of the Province of
Archangel.

Last night the enemy entered Shen-
kursk, while the third column of
American, Russian and British which
have evacuated Shenkursk, marched in
a round-about detour over the deep
snow on the road, evading a force of
several hundred of the enemy, who
waited on the main high road to trap
the column in its retreat.

In good spirits, despite long
marches in the cold and ten days of
hard fighting, the Americans and the
other troops of the allied forces were
to-day at Shogovai, approximately
60 miles north of Shenkursk, on the
Vogra River. The enemy apparently
is sending patrols to follow the re-
treating troops, but up to this morn-
ing no new attacks had been made on
this sector.

THE BEEF THAT EUROPE WANTS



"Clear The Way 2nd"
Grand Champion Steer at the
Guelph Winter Fair, exhibited by Mr.
A. Russell of Toronto.

"Clear The Way 2nd" is the perfect
type of steer for beef. He was
awarded the Grand Championship for
steers of all classes at the recent Live
Stock Show at Guelph, Ont., where
he competed against some of the
best animals produced in Canada. He
was also Grand Champion at the
Canadian National Exhibition, Tor-
onto, and took third prize in the class
for Shorthorn-sired steers at the Pa-
terson Stock Show in Chicago, and was
a prize there as the best Shorthorn-
sired heifer. He was also first in his
class as a senior yearling and was
champion steer in Grades and Crosses
of any Breed in the Guelph Show.
"Clear The Way 2nd" was sired by
Sylvan Power and bred by R. O. Hun-
ter of Exeter, Ont. He was finished
to the top bloom when shown.

"There are, of course, two sides to
the Canadian live stock industry,"
said his owner, Mr. A. T. Russell—
"live stock and dead stock; that is
breeding stock and stock bred for meat.
There never was a time when so much
attention was being paid by Canadian
live stock men to the profitable knowl-
edge of high grade stock. In view of the
European shortage there is an ex-
cellent opportunity for both branches
of the live stock industry in this
country."

"Clear The Way 2nd" represents
perfection in form and finish for
Christmas beef. It is said that
prime Argentine beef reaches the
British market of quality equal to
Canadian Christmas beef. The Ar-
gentine meat trade has been built up
by the liberal policy adopted by the
breeders in importing the best pure
bred sires, the world's stock industry.
The Canadian live stock industry has
similar attention to hold the impor-
tance of the live stock industry, as
principally, as the principal countries
of Europe are deficient in cattle to the
extent of 23,000,000 head.

YOUR PROBLEMS
BY
MRS. HELEN LAW

Mother and daughters of all ages are cordially invited to write to this
department. Initials only will be published with each question and its answer
is a means of identification, but full name and address must be given in each
letter. Write on one side of paper only. Answers will be mailed direct—
stamped and addressed envelope is enclosed.
Address all correspondence for this department to Mrs. Helen Law, 253
Woodbine Ave., Toronto.

Progress.—Thank you for your kind
words. This department has been
crowded out for several weeks be-
cause of lack of space. Letters have
been answered by mail.

All thoughtful persons are looking
forward to the coming of a new year
in the history of mankind. The past
year was through with soul-stirring
events, but 1919 may witness tremen-
dous changes. As you say, things
can never return to the
old plane. People are de-
manding more of their communities
now than ever before. They want
better schools and more convenient
homes. They are asking for social
clubs and places of amusement.
They are insisting upon better roads
and marketing facilities. Above all
they are demanding that their com-
munity give them some of the ad-
vantages of the city, in order that
farm life may have a little less
drudgery, and a little more wholesome
enjoyment in it. What is your com-
munity doing to meet the growing de-
mands? Have you a social centre
where your people may go for enter-
tainment? Have you a public play-
ground suitably equipped for your
children in school? Do you ever
have a municipal holiday and general
get-together? If you live in one of
these communities that is doing things
for its people, please write and tell
us all about it. You may thereby
start others along the road to pro-
gress.

Maid Marion—Try the pot-o-
beans game some evening. It is
played thus:—
From two to four is the best num-
ber of players for the pot-o-beans
game. Place fifty beans in the
table and call it the pot. Arrange
the players around it and let them
A, B, C, D, from left to right. Each
player takes five beans from the po-
t and puts his hands under the table.
A begins the game by closing his
left hand and bringing it up to the
table in front of B, who guesses how
many beans it holds. If B's guess is
correct, he gets all the beans in the

SPECIALIST SAID H MUST OPERATE

Book "FRUIT-A-TIVES" Instead,
Is Now in Perfect Health.



MME. F. GAREAU
158 Papineau Ave., Montreal.
Three years, I suffered great
trouble in the lower part of my body,
swelling or bloating. I saw a
doctor, who carefully examined
me and gave me several tonics to
which did not help me. Then
I saw a specialist who said I
must undergo an operation.
This I refused to permit.
I read about "Fruit-A-Tives" and
wonderful results it was giving
A this medicine is not a tonic
merely, so I decided to try it.
My first box gave great relief and
improved the treatment, taking
boxes more. Now my health is
perfect—I am free of pain and
—and I give "Fruit-A-Tives"
my "finest thanks."
Mme. F. GAREAU,
158 Papineau Ave., Montreal.
Box 6 for \$2.50, trial box 50c.
J. Ottawa.

very with excellent results
of maps. Up to the present,
times have been issued which
the narrative of the war from
end of 1917. Probably the ad-
ditional volumes will complete the
series. The price at present is \$1.25
a volume. Nothing more beau-
tifully valuable, both for the
present and the future, could be
found. Set of these splendid books
is a very delightful work with
the author's own words to write
for our club on this subject.
Second Chance—My children—
"help me!"

A suggestion would be that you
show you can teach your children
to make the same mistakes
you made in your own life. Let
them install in them some of the
lessons you have learned. This
course will help you to do it.
You can show how to do it.
You can show how to do it.
You can show how to do it.
You can show how to do it.

You can teach your children
to make the same mistakes
you made in your own life. Let
them install in them some of the
lessons you have learned. This
course will help you to do it.
You can show how to do it.
You can show how to do it.
You can show how to do it.

You can teach your children
to make the same mistakes
you made in your own life. Let
them install in them some of the
lessons you have learned. This
course will help you to do it.
You can show how to do it.
You can show how to do it.
You can show how to do it.

You can teach your children
to make the same mistakes
you made in your own life. Let
them install in them some of the
lessons you have learned. This
course will help you to do it.
You can show how to do it.
You can show how to do it.
You can show how to do it.

You can teach your children
to make the same mistakes
you made in your own life. Let
them install in them some of the
lessons you have learned. This
course will help you to do it.
You can show how to do it.
You can show how to do it.
You can show how to do it.

You can teach your children
to make the same mistakes
you made in your own life. Let
them install in them some of the
lessons you have learned. This
course will help you to do it.
You can show how to do it.
You can show how to do it.
You can show how to do it.

You can teach your children
to make the same mistakes
you made in your own life. Let
them install in them some of the
lessons you have learned. This
course will help you to do it.
You can show how to do it.
You can show how to do it.
You can show how to do it.

You can teach your children
to make the same mistakes
you made in your own life. Let
them install in them some of the
lessons you have learned. This
course will help you to do it.
You can show how to do it.
You can show how to do it.
You can show how to do it.

You can teach your children
to make the same mistakes
you made in your own life. Let
them install in them some of the
lessons you have learned. This
course will help you to do it.
You can show how to do it.
You can show how to do it.
You can show how to do it.