

To the newest married couple, silverware, clock or carving set.

To the oldest married couple, silverware, clock or carving set.

In addition to above we will help out with prizes for selected events. All awards must be made by your own picnic Committees. These prizes are our free gift and are charged to our advertising account.

AMUSEMENTS.

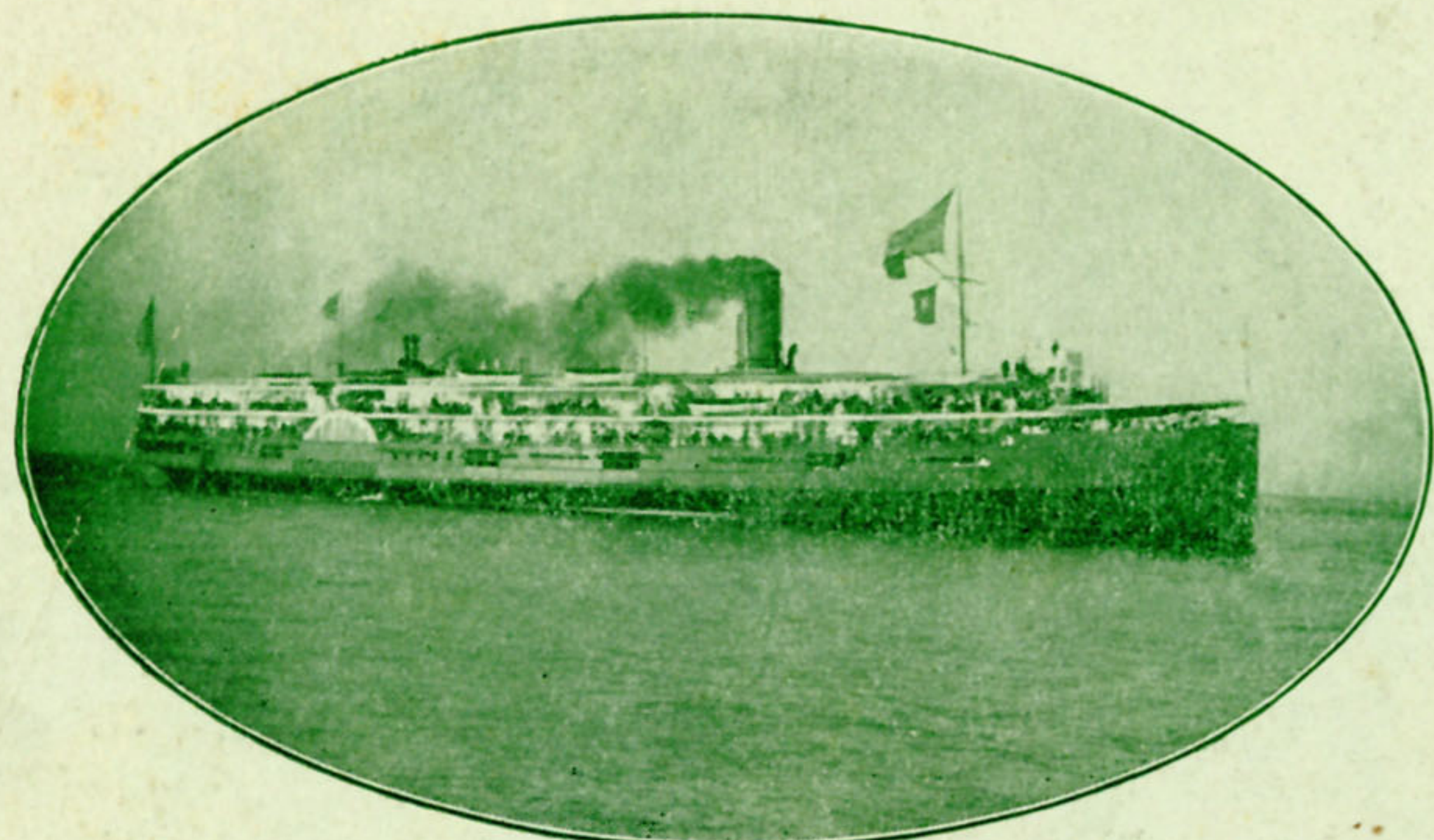
All our amusements are clean and the best we are able to obtain. Merry-go-round, motion pictures, dancing pavillion, bump the bumps, laughing gallery, castle slide, ponies and donkeys, bowling, roller skates, row boats, motor boats, bathing and fishing. The very successful Grimsby Beach Stock Company will again

appear at the Auditorium in wholesome plays during July and August. Our photograph gallery will be installed in a new building and will be operated by one of the most successful photographers in these parts, Mr. C. F. Riblet, of Cleveland. There is plenty to keep everyone busy, young and old; plenty of opportunity to spend all the money you bring with you if you wish to spend it, and to get your money's worth. There is no Midway or Coney Island.



HOW TO GET THERE.

Grimsby Beach is in the midst of the great Ontario fruit belt, on the south shore of Lake Ontario, 30 miles across from Toronto. It is on the main line of the Grand Trunk, midway between Niagara Falls and Hamilton. The station of the Grand Trunk is right at our gate, as is also the terminal of the Hamilton, Grimsby and Beamsville Electric. The passenger agents of these roads in your city, will make you rates for any size party. The fine steamers of the Grimsby Beach and South Shore Navigation Company direct from Toronto or Hamilton, land directly at the park two or three times a day. A very low excursion rate of 50 cents round trip, with rebate to large parties may be had by this route.



WRITE NOW.

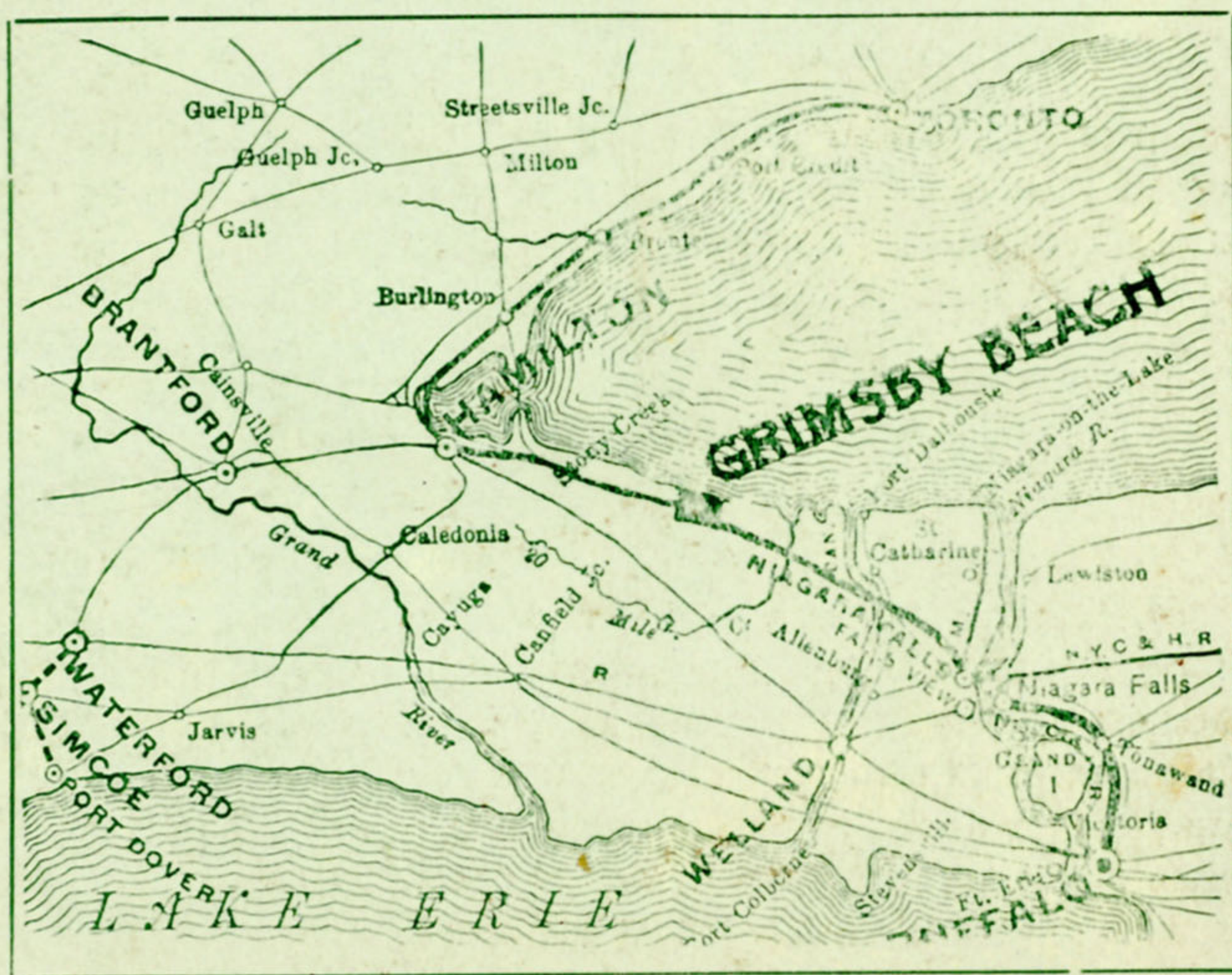
We wish to hear from every picnic committee in this section of the country. We know we have the grandest picnic resort in all Canada and can help you make your outing a success. Transportation will be furnished committees desiring to visit the grounds. Write now for further particulars and prospective dates. Last season we had 92 picnics, one of them the Butchers' Barbecue, the largest in Ontario. This season we hope to entertain four hundred or more, consequently, the earlier you reserve your date the better. We know we can make your outing the greatest success in its history, and can refer you to any or all of those who were with us last year.

For further information address—

THE GRIMSBY BEACH COMPANY,

H. H. Wylie, General Manager,

GRIMSBY BEACH, - - ONTARIO.



FOR TRANSPORTATION.



The Hamilton, Grimsby and Beamsville Electric has its terminus right at our gates. Cars run regularly every hour from Hamilton, with many extras on rush days. Regular fare, round trip 60 cents. Big reduction to parties. See Mr. Geo. Waller, H., G. & B. Terminal, Hamilton.

The Grand Trunk Railway maintains a station at our gates. Six regular trains each day. Very low excursion rates may be had on application from your local agent.

The steamer Grimsby, of the Grimsby Beach and South Shore Navigation Co., is scheduled to make two trips a day from Toronto on Mondays, Tuesdays, Thursdays and Fridays, and three trips on Wednesdays and Saturdays. Special trips will be made from Hamilton for excursions only. The steamer lands you at the Park wharf. No long, sunny walk or ride. Transportation will be provided all committees wishing to inspect Grimsby Beach. Exceptionally low rates will be made for large excursions. See Mr. Thompson, 16 King St. West, Toronto.