

FULL SIZE
DIMENSIONS IN INCHES.

NOTE: THE HEAD IS TO BE CONCENTRIC WITH THE TRUE LONGITUDINAL AXIS OF BODY WITHIN A LIMIT OF .025 INCH.

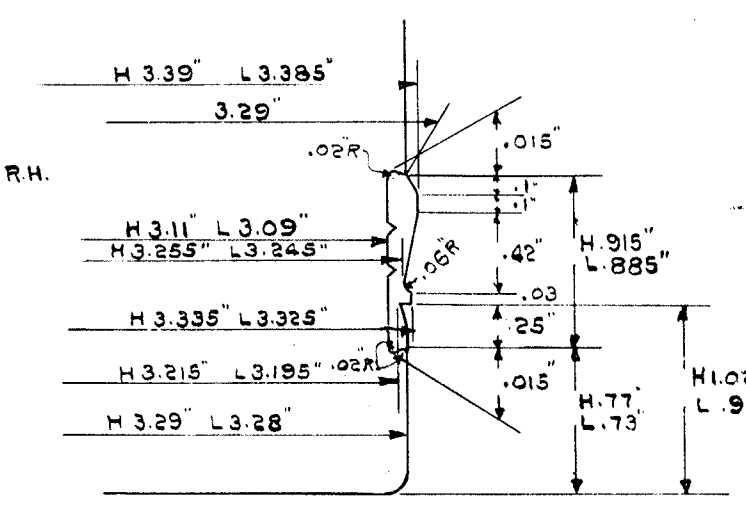
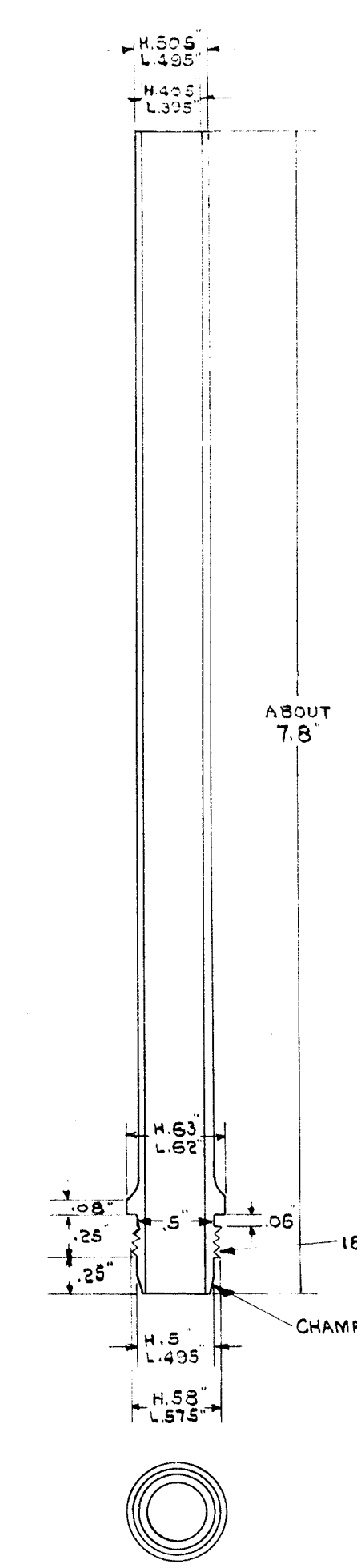
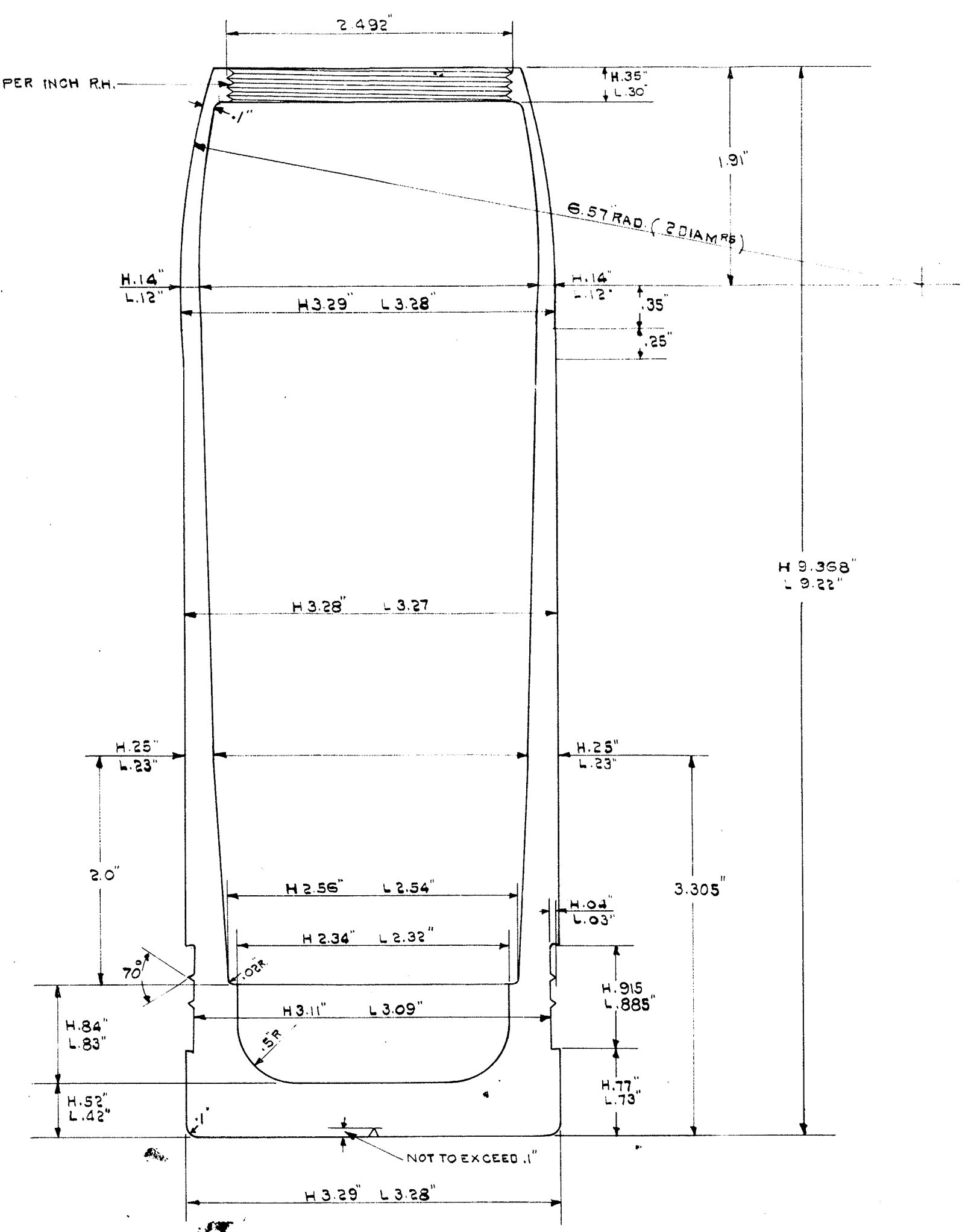
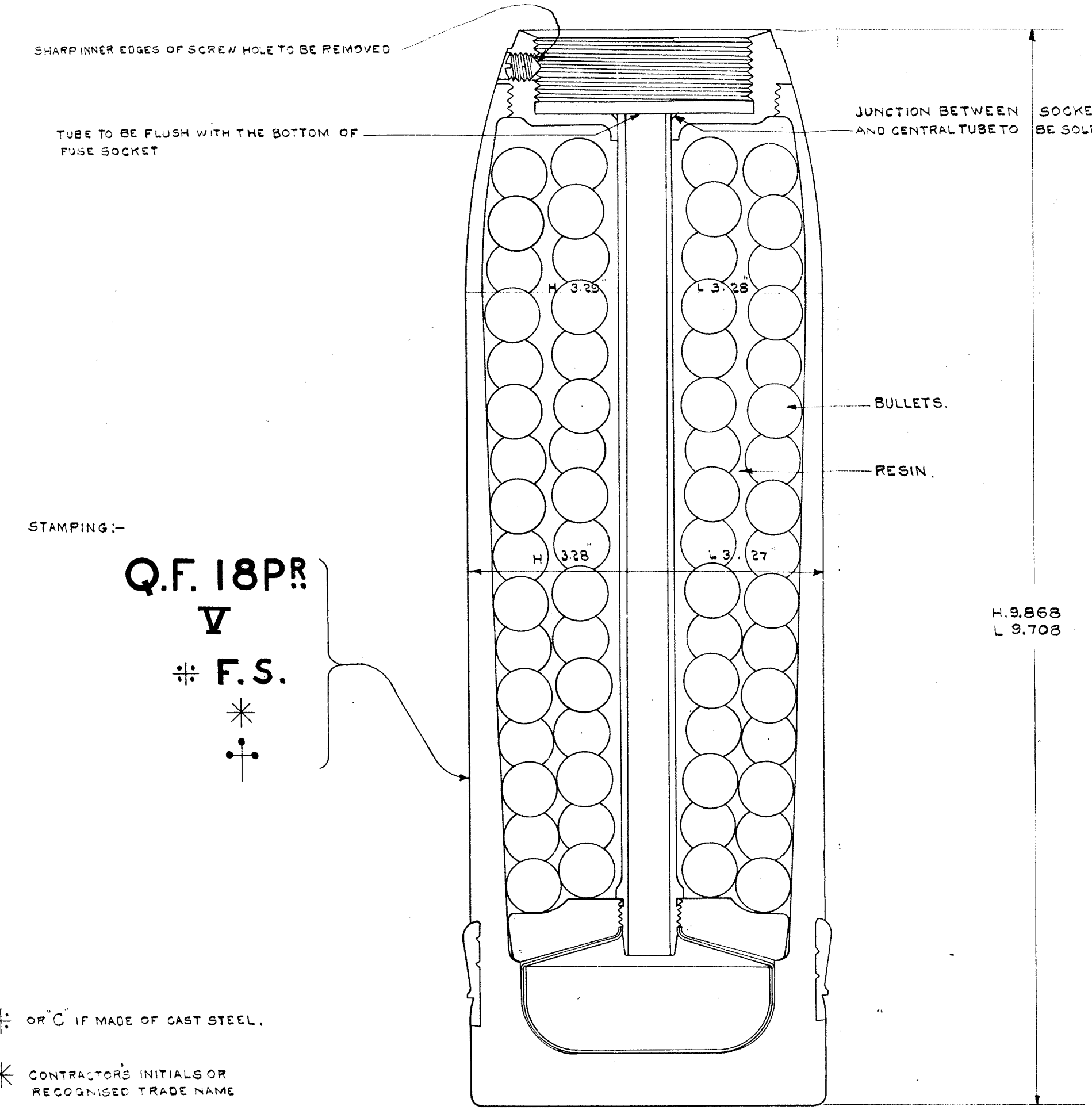
BODY

CENTRAL TUBE

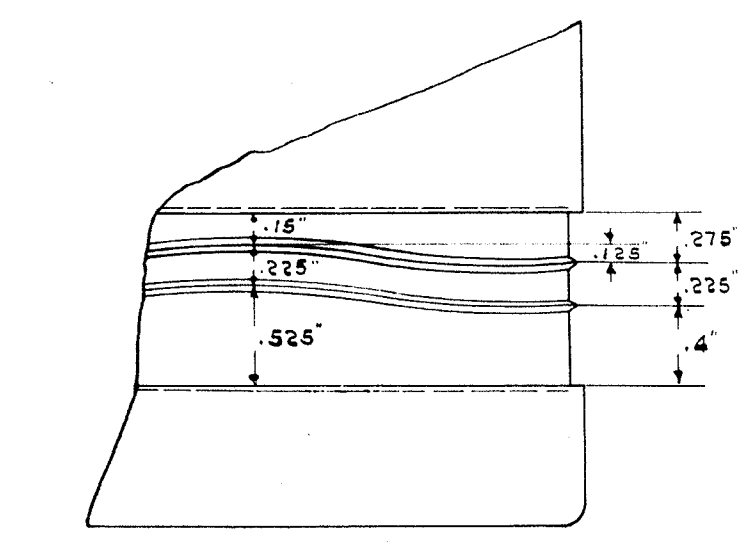
WEIGHTS

WEIGHTS		LB.	DRS.
WEIGHT OF SHELL EMPTY WITH BAND, UNPAINTED		17	5 - 0 1/2
BURSTING CHARGE (POWDER REL. 1033)		2	8
PAINT (R.F. OR BLANK FG NEW 174)		5	1/2
FUZE N°80		15	2
TOTAL WEIGHT		18	8 1/2 DRS.
DETAILS		LB.	DRS.
STEEL BODY		6	5 - 12 1/2
DRIVING BAND		4	12 1/2
STEEL DISC		9	8
METAL SOCKET		8	8
BRASS TUBE		2	12
TIN CUP		1	12
ABOUT 349 MIXED METAL BALLS (4 PER LB.)		8	8 - 3
RESIN		12	13 1/2
TOTAL WEIGHT EMPTY (UNPAINTED)		17	6 - 0 1/2 1/2 DRS.

* TO REGULATE TO WEIGHT, A FEW BUCKSHOT MAY BE USED.

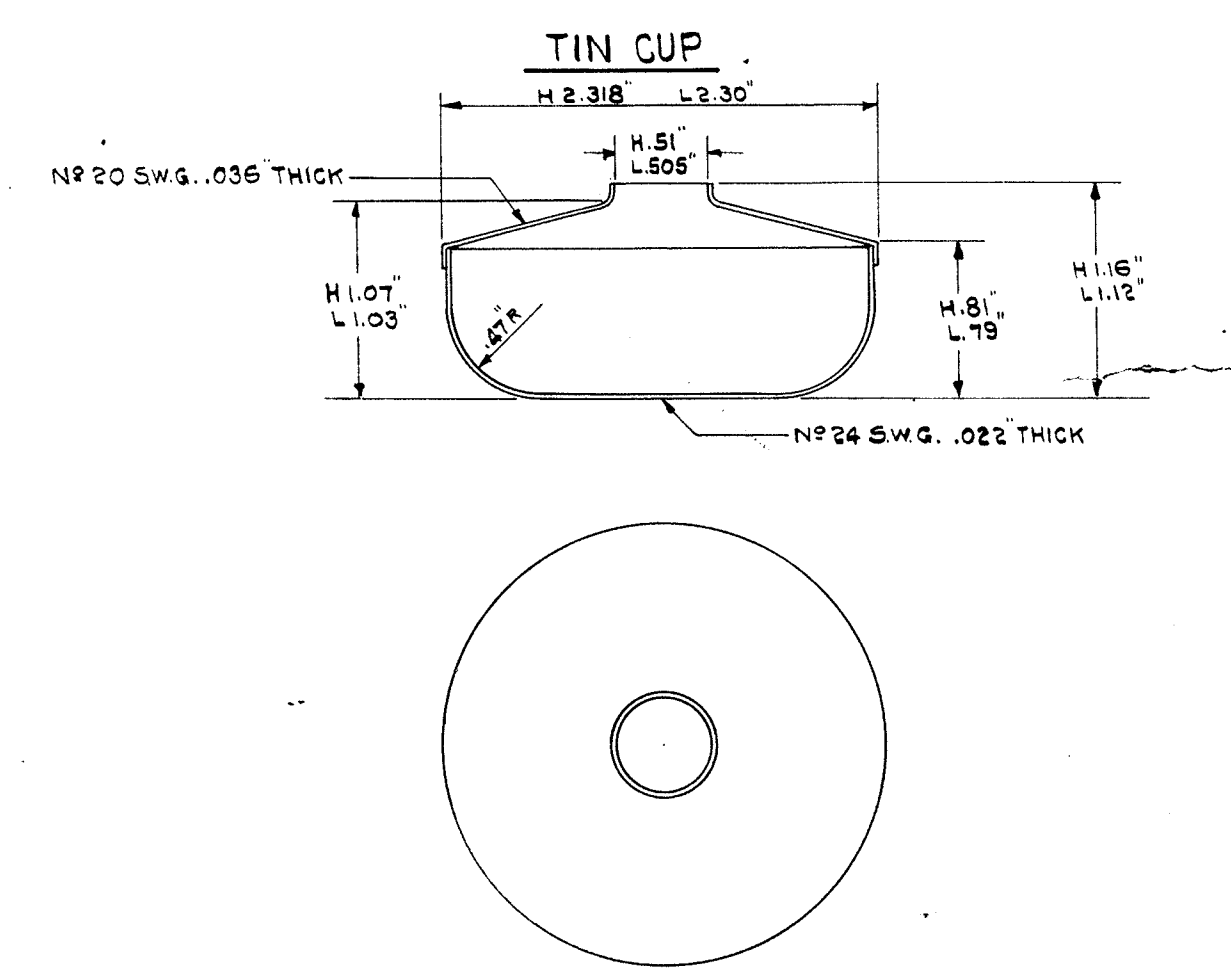
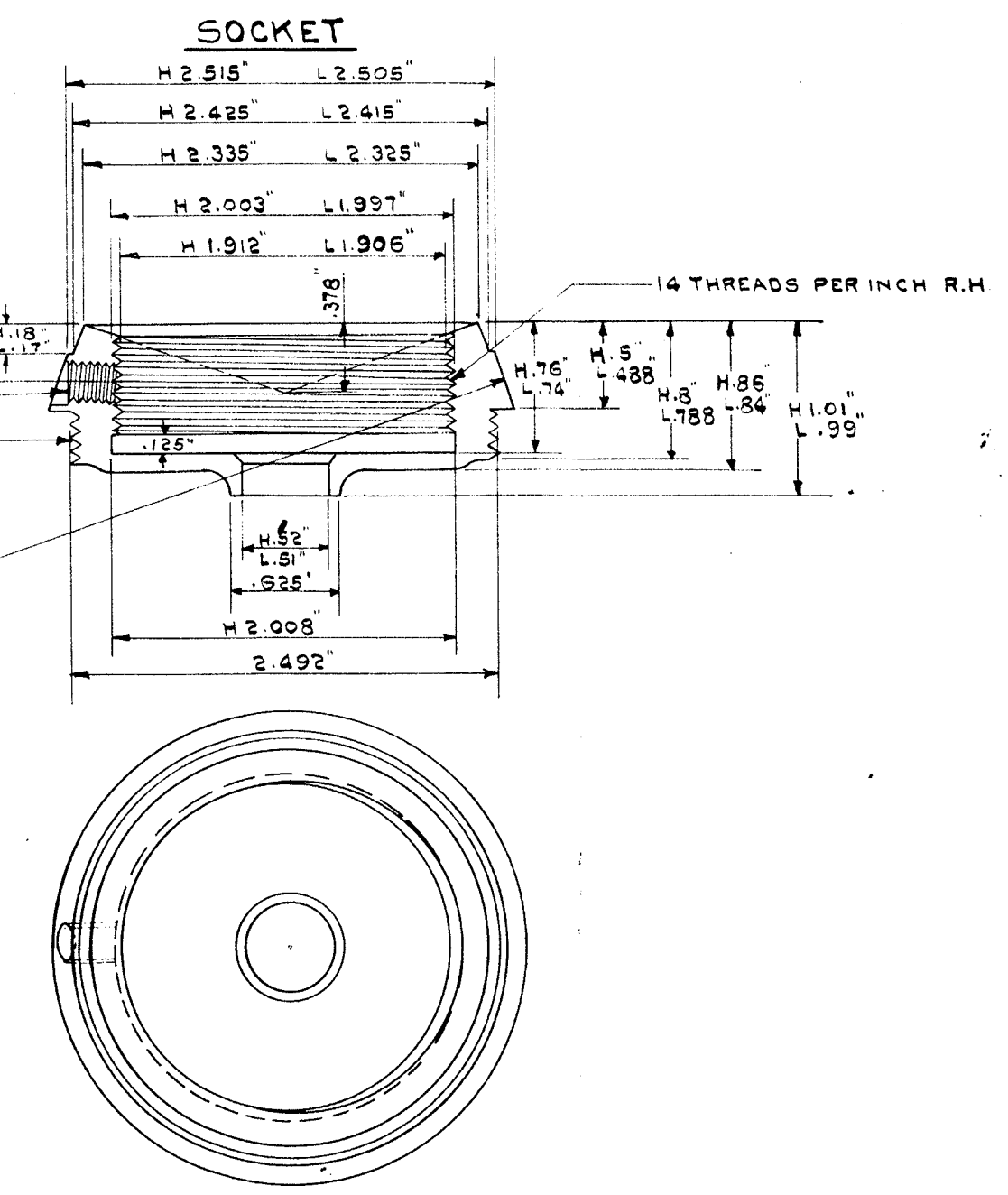


DRIVING BAND
RL 13413A

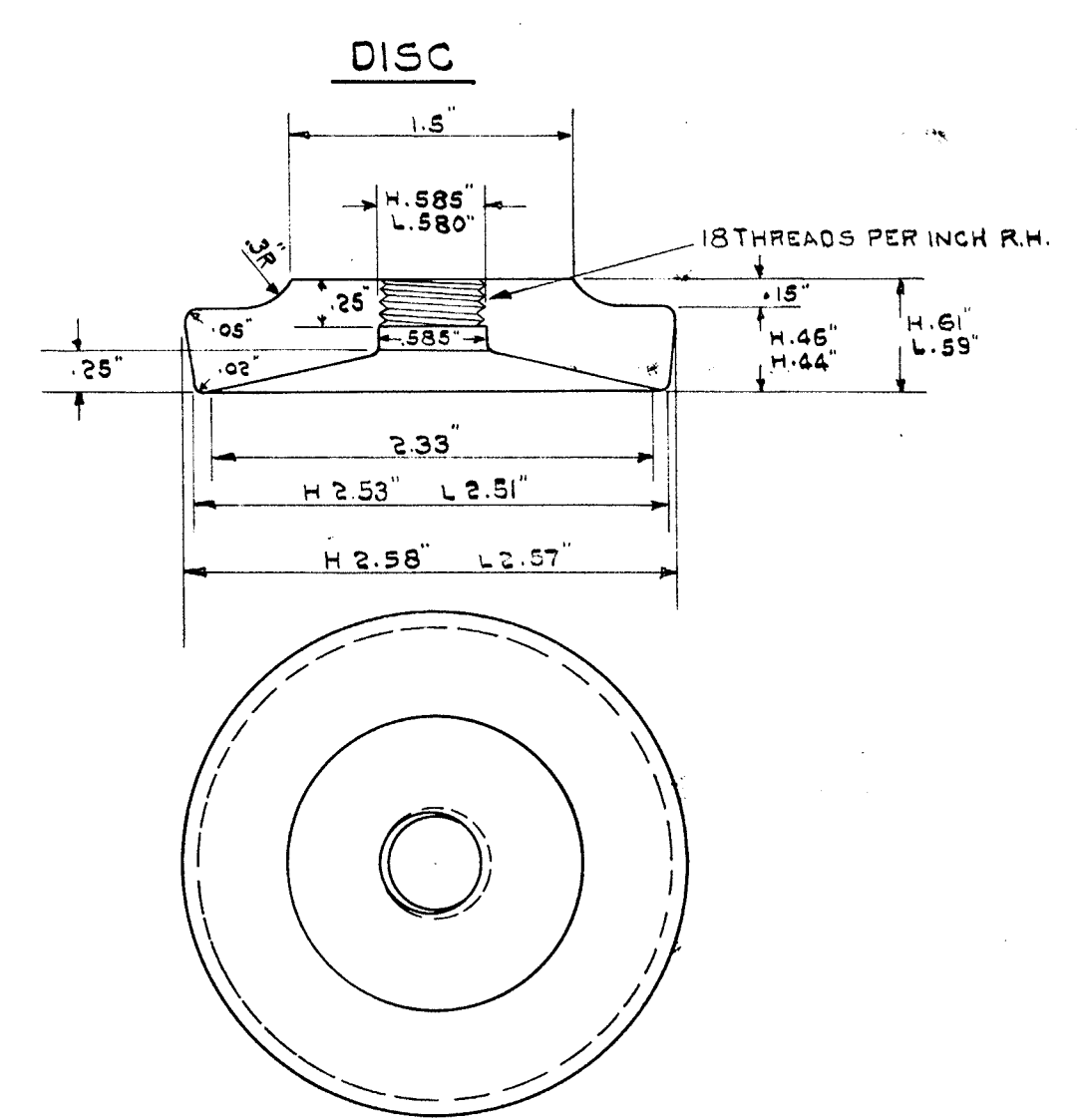
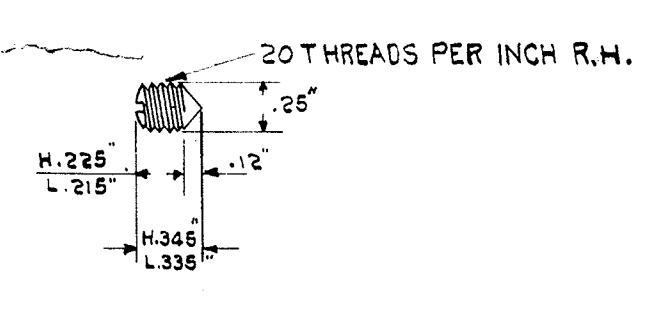


PART DEVELOPMENT OF SHELL
SHOWING WAVED RIBS (3 WAVES)

OR 'C' IF MADE OF CAST STEEL.
* CONTRACTOR'S INITIALS OR RECOGNIZED TRADE NAME
+ DATE OF COMPLETION



SCREW FIXING



SHELL Q.F. SHRAPNEL 18PDE MARK V/L/
STEEL, WITH FIXING SCREW

REFERENCES	
R.L.W.G. No. 7072A(1) DATED 30-12-14	
SHELL COMMITTEE	
DRAWN BY	
TRACED BY	E. G. G.
CHECKED BY	J. H. C.
D'WG. No G-23	
NO. OF SHEETS	
SHEET NO.	