

Agisoft Metashape

Processing Report
25 October 2023



Survey Data

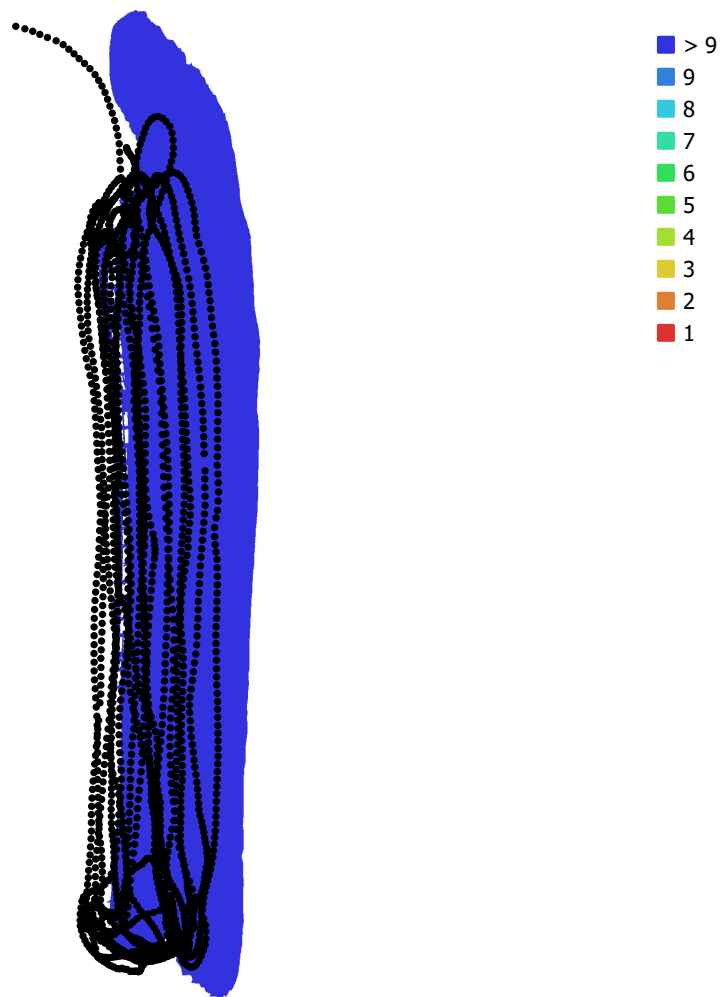


Fig. 1. Camera locations and image overlap.

Number of images: 2,325

Camera stations: 2,325

Tie points: 1,460,362

Projections: 4,599,272

Reprojection error: 1.19 pix

Camera Model	Resolution	Focal Length	Pixel Size	Precalibrated
Canon EOS 5D Mark IV, ...	6720 x 4480	15 mm	5.36 x 5.36 μm	No

Table 1. Cameras.

Camera Calibration

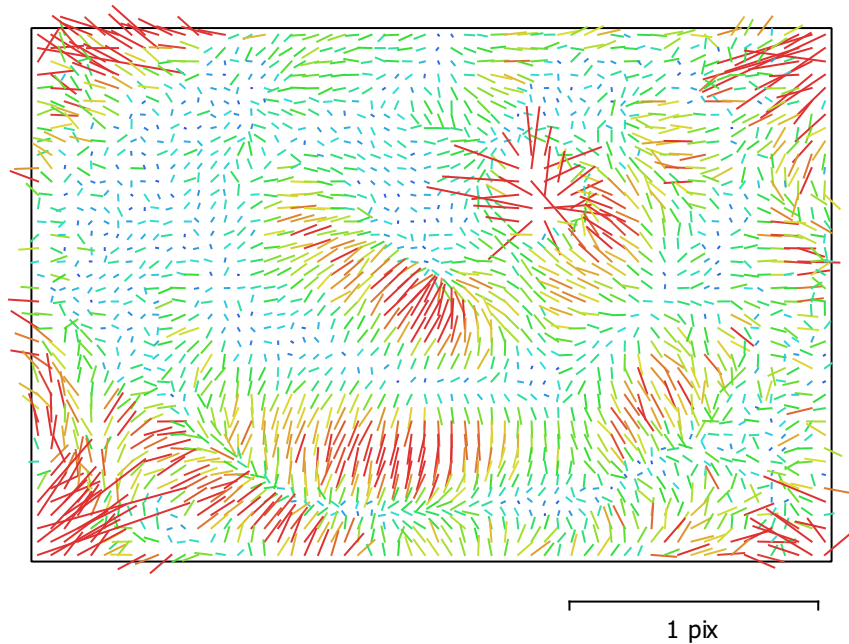


Fig. 2. Image residuals for Canon EOS 5D Mark IV, EF8-15mm f/4L FISHEYE USM (15mm).

Canon EOS 5D Mark IV, EF8-15mm f/4L FISHEYE USM (15mm)

2325 images

Type	Resolution	Focal Length	Pixel Size
Fisheye	6720 x 4480	15 mm	5.36 x 5.36 μm

	Value	Error	F	Cx	Cy	K1	K2	K3	P1	P2
F	3076.98	0.019	1.00	-0.34	0.13	-0.67	0.36	-0.25	0.23	-0.15
Cx	2.19557	0.016		1.00	-0.08	0.09	-0.03	0.02	-0.77	0.05
Cy	-30.9363	0.017			1.00	-0.06	0.03	-0.02	0.09	-0.72
K1	-0.0462424	7.5e-06				1.00	-0.90	0.79	-0.08	0.08
K2	0.00561822	9.2e-06					1.00	-0.97	0.03	-0.04
K3	-0.00148922	3.8e-06						1.00	-0.03	0.02
P1	-0.00020083	9.1e-07							1.00	-0.08
P2	0.000112651	8.6e-07								1.00

Table 2. Calibration coefficients and correlation matrix.

Digital Elevation Model

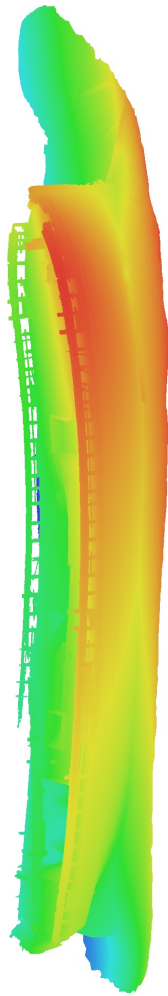


Fig. 3. Reconstructed digital elevation model.

Processing Parameters

General

Cameras	2325
Aligned cameras	2325
Coordinate system	Local Coordinates (m)
Rotation angles	Yaw, Pitch, Roll

Point Cloud

Points	1,460,362 of 1,687,377
RMS reprojection error	0.174497 (1.18532 pix)
Max reprojection error	0.533391 (56.2448 pix)
Mean key point size	5.06238 pix
Point colors	3 bands, uint8
Key points	5.69 GB
Average tie point multiplicity	3.37893

Alignment parameters

Accuracy	High
Generic preselection	Yes
Reference preselection	No
Key point limit	30,000
Key point limit per Mpx	1,000
Tie point limit	2,500
Exclude stationary tie points	Yes
Guided image matching	No
Adaptive camera model fitting	No
Matching time	53 minutes 40 seconds
Matching memory usage	1.55 GB
Alignment time	18 minutes 32 seconds
Alignment memory usage	1.24 GB
Date created	2023:10:24 06:34:54
Software version	1.8.0.13794
File size	168.75 MB

Depth Maps

Count	2324
Depth maps generation parameters	
Quality	Medium
Filtering mode	Moderate
Max neighbors	16
Processing time	52 minutes 46 seconds
Memory usage	1.71 GB
Date created	2023:10:24 07:46:37
Software version	1.8.0.13794
File size	4.28 GB

Dense Point Cloud

Points	414,966,164
Point colors	3 bands, uint8
Depth maps generation parameters	
Quality	Medium
Filtering mode	Moderate
Max neighbors	16
Processing time	52 minutes 46 seconds
Memory usage	1.71 GB

Dense cloud generation parameters

Processing time	5 hours 6 minutes
Memory usage	10.33 GB
Date created	2023:10:24 14:07:57
Software version	1.8.0.13794
File size	5.51 GB

Model

Faces	7,999,999
Vertices	4,001,263
Vertex colors	3 bands, uint8
Texture	8,192 x 8,192, 4 bands, uint8

Depth maps generation parameters

Quality	Medium
Filtering mode	Moderate
Max neighbors	16
Processing time	52 minutes 46 seconds
Memory usage	1.71 GB

Reconstruction parameters

Surface type	Arbitrary
Source data	Depth maps
Interpolation	Enabled
Strict volumetric masks	No
Processing time	27 minutes 23 seconds
Memory usage	11.50 GB

Texturing parameters

Mapping mode	Generic
Blending mode	Mosaic
Texture size	8,192
Enable hole filling	Yes
Enable ghosting filter	No
UV mapping time	2 minutes 7 seconds
UV mapping memory usage	3.16 GB
Blending time	9 minutes 24 seconds
Blending memory usage	4.68 GB
Blending GPU memory usage	2.43 GB
Date created	2023:10:24 08:13:10
Software version	1.8.0.13794
File size	419.57 MB

System

Software name	Agisoft Metashape Professional
Software version	1.8.0 build 13794
OS	Windows 64 bit
RAM	63.92 GB
CPU	Intel(R) Core(TM) i9-9900K CPU @ 3.60GHz
GPU(s)	NVIDIA GeForce RTX 2060 SUPER