

Agisoft Metashape

Processing Report

16 April 2023



Survey Data

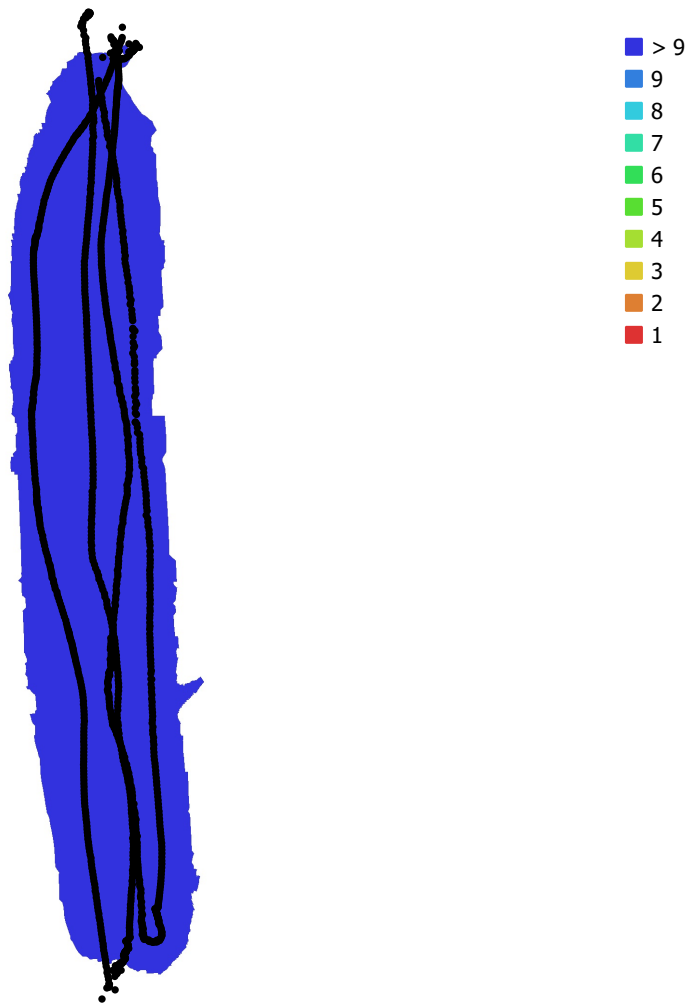


Fig. 1. Camera locations and image overlap.

Number of images: 1,521

Camera stations: 1,431

Tie points: 211,178

Projections: 643,795

Reprojection error: 1.25 pix

Camera Model	Resolution	Focal Length	Pixel Size	Precalibrated
unknown	1920 x 1080	unknown	unknown	No

Table 1. Cameras.

Camera Calibration

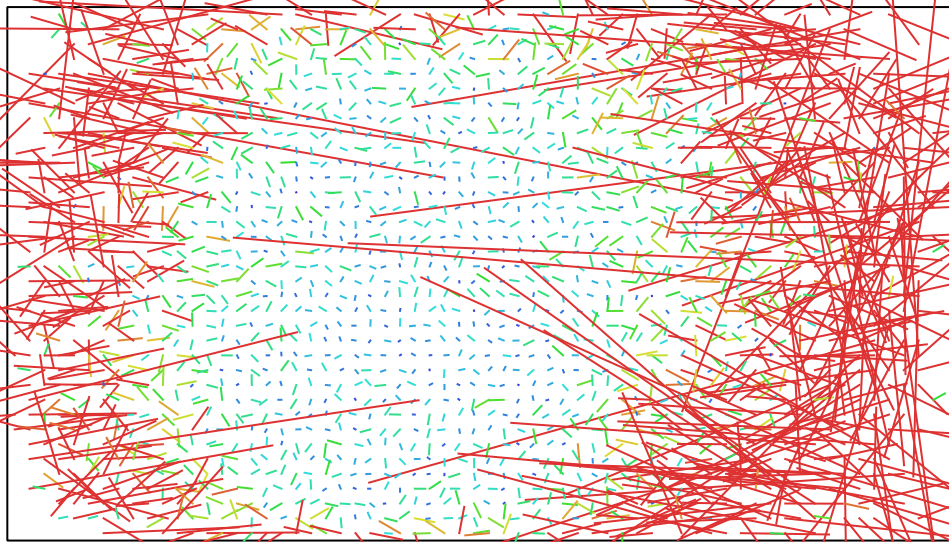


Fig. 2. Image residuals for unknown.

unknown

1521 images

Type	Resolution	Focal Length	Pixel Size
Frame	1920 x 1080	unknown	unknown
F:	1243.34		
Cx:	7.20614	B1:	0
Cy:	-1.83232	B2:	0
K1:	-0.0422744	P1:	0.00514217
K2:	0.127638	P2:	0.000811702
K3:	0.0394069	P3:	0
K4:	0	P4:	0

Digital Elevation Model

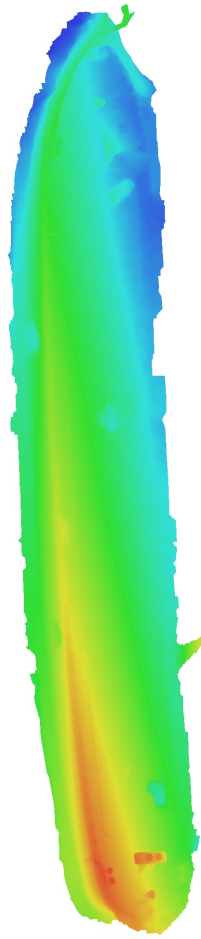


Fig. 3. Reconstructed digital elevation model.

Processing Parameters

General

Cameras	1521
Aligned cameras	1431
Coordinate system	Local Coordinates (m)
Rotation angles	Yaw, Pitch, Roll

Point Cloud

Points	211,178 of 308,236
RMS reprojection error	0.282445 (1.25084 pix)
Max reprojection error	0.853176 (33.3574 pix)
Mean key point size	4.00788 pix
Point colors	3 bands, uint8
Key points	963.92 MB
Average tie point multiplicity	3.55395

Alignment parameters

Accuracy	High
Generic preselection	Yes
Reference preselection	No
Key point limit	30,000
Key point limit per Mpx	1,000
Tie point limit	2,500
Exclude stationary tie points	Yes
Guided image matching	No
Adaptive camera model fitting	No
Matching time	1 seconds
Matching memory usage	69.65 MB
Alignment time	7 minutes 48 seconds
Alignment memory usage	525.88 MB
Date created	2023:04:08 18:33:22
Software version	1.8.0.13794
File size	26.84 MB

Depth Maps

Count	1154
Depth maps generation parameters	
Quality	High
Filtering mode	Mild
Max neighbors	16
Processing time	6 minutes 59 seconds
Memory usage	620.45 MB
Date created	2023:04:08 18:50:06
Software version	1.8.0.13794
File size	198.06 MB

Dense Point Cloud

Points	5,830,452
Point colors	3 bands, uint8
Depth maps generation parameters	
Quality	High
Filtering mode	Mild
Max neighbors	16
Processing time	6 minutes 59 seconds
Memory usage	620.45 MB

Dense cloud generation parameters

Processing time	11 minutes 48 seconds
Memory usage	2.30 GB
Date created	2023:04:08 19:44:53
Software version	1.8.0.13794
File size	77.80 MB

Model

Faces	2,629,650
Vertices	1,315,417
Vertex colors	3 bands, uint8
Texture	8,192 x 8,192, 4 bands, uint8

Depth maps generation parameters

Quality	High
Filtering mode	Mild
Max neighbors	16
Processing time	6 minutes 59 seconds
Memory usage	620.45 MB

Reconstruction parameters

Surface type	Arbitrary
Source data	Depth maps
Interpolation	Enabled
Strict volumetric masks	No
Processing time	56 seconds
Memory usage	1.85 GB

Texturing parameters

Mapping mode	Generic
Blending mode	Mosaic
Texture size	8,192
Enable hole filling	Yes
Enable ghosting filter	No
UV mapping time	1 minutes 16 seconds
UV mapping memory usage	2.83 GB
Blending time	1 minutes 42 seconds
Blending memory usage	1.72 GB
Blending GPU memory usage	1.56 GB
Date created	2023:04:08 18:51:00
Software version	1.8.0.13794
File size	188.37 MB

System

Software name	Agisoft Metashape Professional
Software version	1.8.0 build 13794
OS	Windows 64 bit
RAM	63.92 GB
CPU	Intel(R) Core(TM) i9-9900K CPU @ 3.60GHz
GPU(s)	NVIDIA GeForce RTX 2060 SUPER