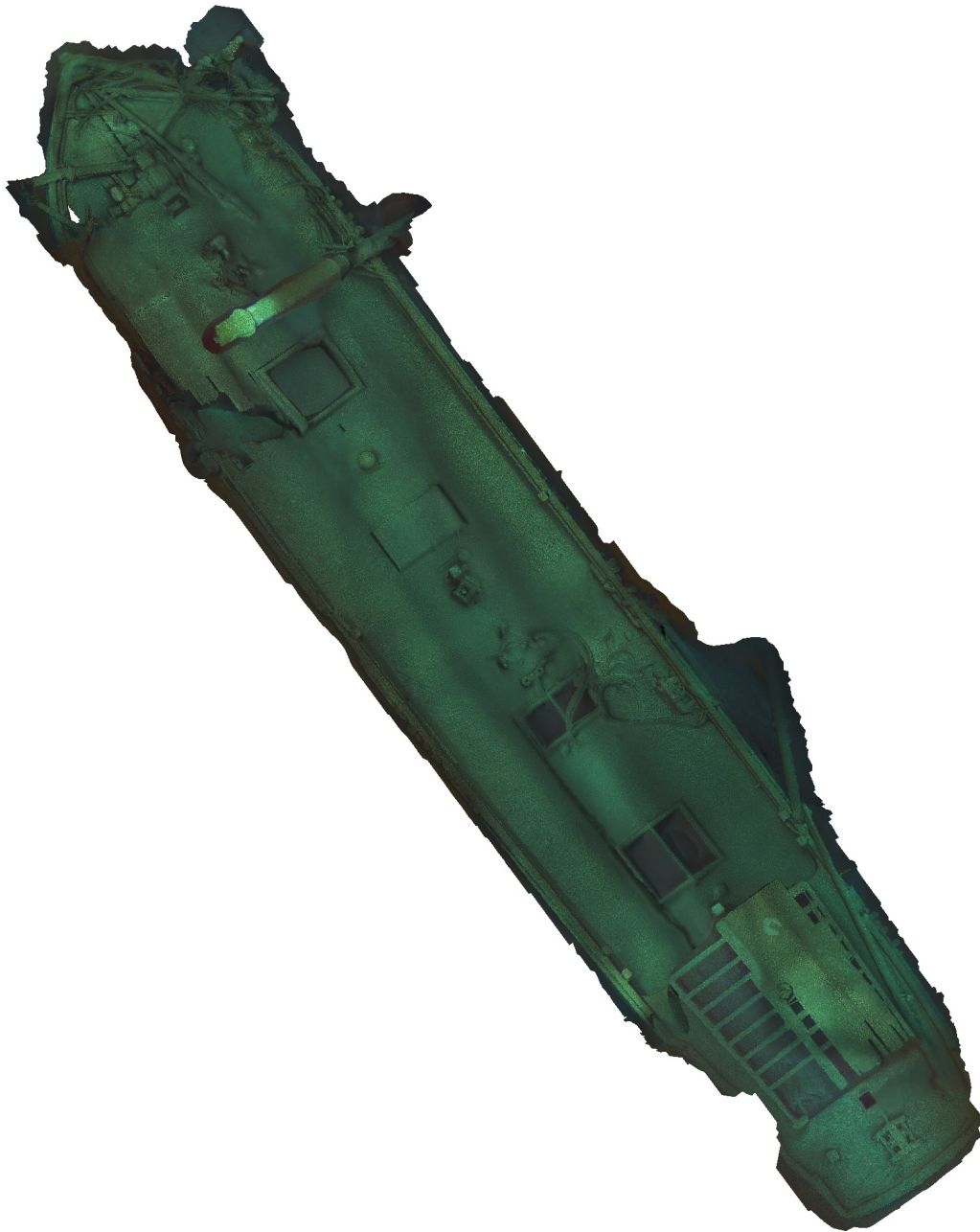


Agisoft Metashape

Processing Report
09 March 2023



Survey Data

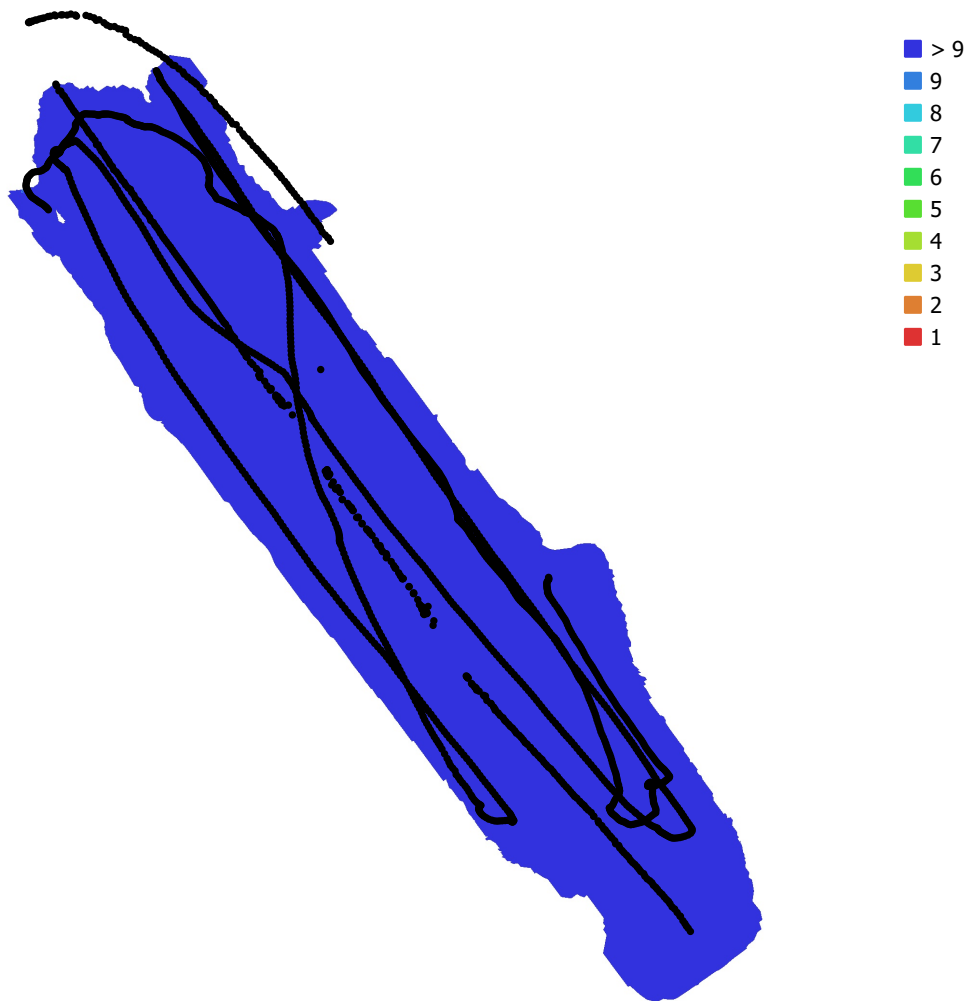


Fig. 1. Camera locations and image overlap.

Number of images: 2,424

Camera stations: 2,064

Tie points: 748,719

Projections: 3,103,605

Reprojection error: 0.852 pix

Camera Model	Resolution	Focal Length	Pixel Size	Precalibrated
unknown	1920 x 1080	unknown	unknown	No

Table 1. Cameras.

Camera Calibration

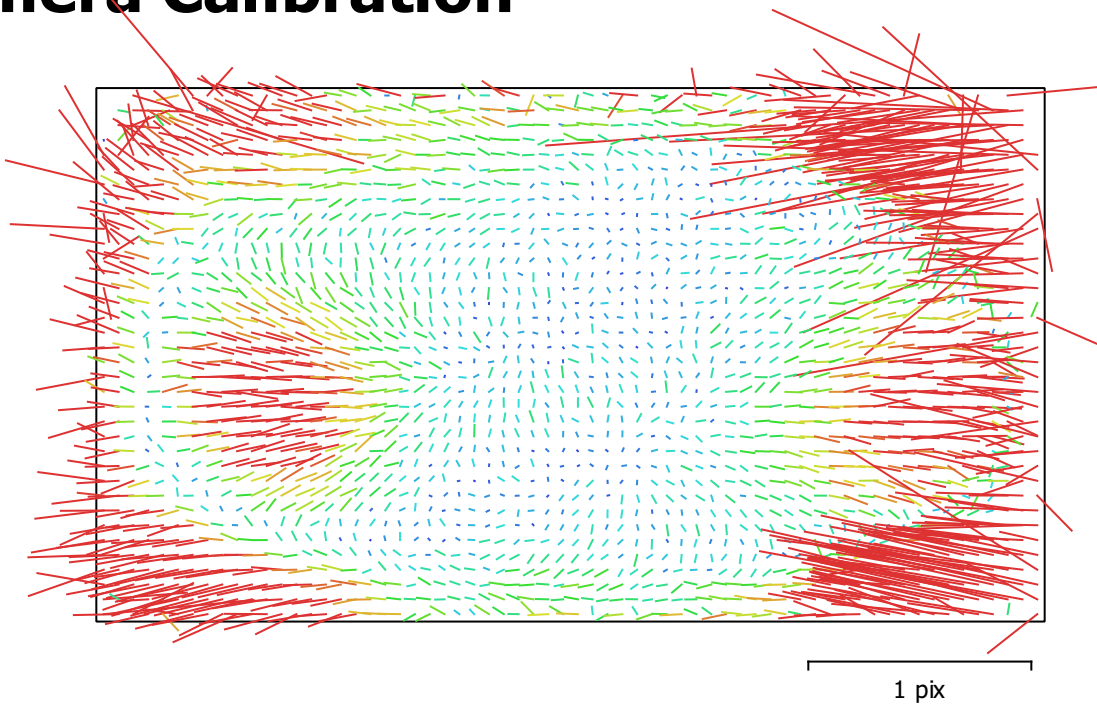


Fig. 2. Image residuals for unknown.

unknown

2424 images

Type	Resolution	Focal Length	Pixel Size
Frame	1920 x 1080	unknown	unknown

	Value	Error	F	Cx	Cy	K1	K2	K3	P1	P2
F	1233.3	0.098	1.00	-0.07	-0.16	0.26	0.14	0.09	0.06	-0.14
Cx	-9.84479	0.03		1.00	-0.03	-0.05	0.03	-0.08	0.78	-0.01
Cy	1.6361	0.036			1.00	-0.10	0.00	0.01	-0.04	0.79
K1	-0.0518005	9.9e-05				1.00	-0.84	0.84	0.02	-0.15
K2	0.1374	0.00034					1.00	-0.95	0.04	0.02
K3	0.0446361	0.00039						1.00	-0.06	0.00
P1	0.00422718	8.6e-06							1.00	-0.06
P2	-0.000365496	1.1e-05								1.00

Table 2. Calibration coefficients and correlation matrix.

Digital Elevation Model

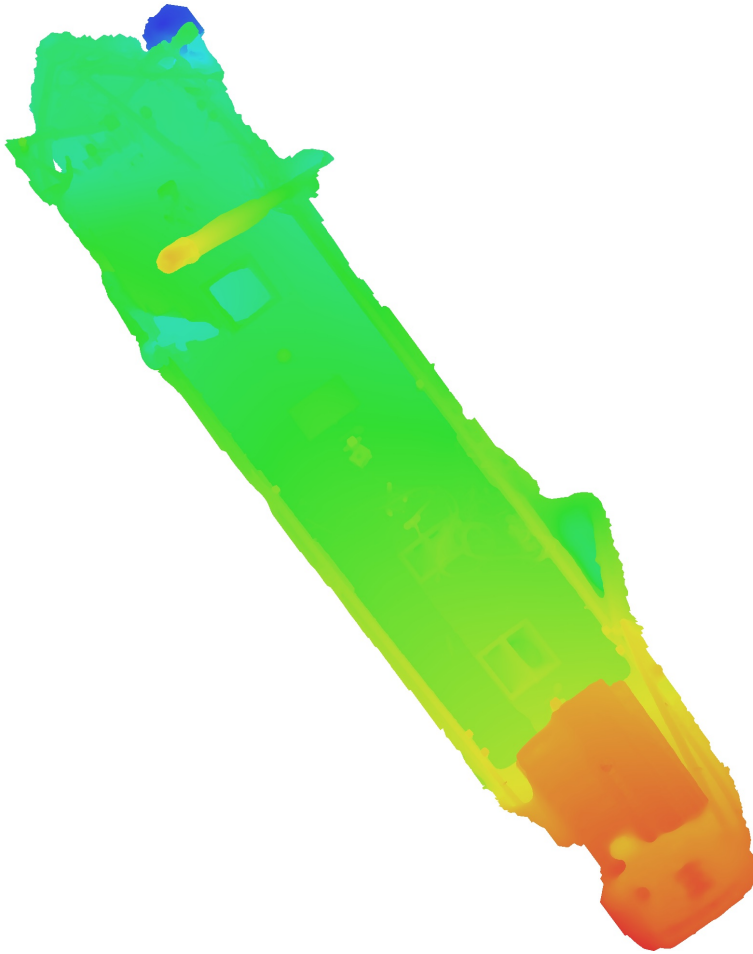


Fig. 3. Reconstructed digital elevation model.

Processing Parameters

General

Cameras	2424
Aligned cameras	2064
Coordinate system	Local Coordinates (m)
Rotation angles	Yaw, Pitch, Roll

Point Cloud

Points	748,719 of 956,710
RMS reprojection error	0.222947 (0.852261 pix)
Max reprojection error	0.669602 (26.7709 pix)
Mean key point size	3.6245 pix
Point colors	3 bands, uint8
Key points	2.00 GB
Average tie point multiplicity	4.53202

Alignment parameters

Accuracy	High
Generic preselection	Yes
Reference preselection	No
Key point limit	30,000
Key point limit per Mpx	1,000
Tie point limit	2,500
Exclude stationary tie points	Yes
Guided image matching	No
Adaptive camera model fitting	No
Matching time	23 minutes 43 seconds
Matching memory usage	750.41 MB
Alignment time	17 minutes 50 seconds
Alignment memory usage	576.79 MB
Date created	2023:01:25 06:38:21
Software version	1.8.0.13794
File size	103.04 MB

Depth Maps

Count	1809
Depth maps generation parameters	
Quality	Medium
Filtering mode	Moderate
Max neighbors	16
Processing time	6 minutes 31 seconds
Memory usage	181.05 MB
Date created	2023:01:25 07:03:17
Software version	1.8.0.13794
File size	325.21 MB

Dense Point Cloud

Points	9,149,390
Point colors	3 bands, uint8
Depth maps generation parameters	
Quality	Medium
Filtering mode	Moderate
Max neighbors	16
Processing time	6 minutes 31 seconds
Memory usage	181.05 MB

Dense cloud generation parameters

Processing time	10 minutes 1 seconds
Memory usage	1.47 GB
Date created	2023:01:25 07:24:11
Software version	1.8.0.13794
File size	120.50 MB

Model

Faces	6,656,963
Vertices	3,328,841
Vertex colors	3 bands, uint8
Texture	8,192 x 8,192, 4 bands, uint8

Depth maps generation parameters

Quality	Medium
Filtering mode	Moderate
Max neighbors	16
Processing time	6 minutes 31 seconds
Memory usage	181.05 MB

Reconstruction parameters

Surface type	Arbitrary
Source data	Depth maps
Interpolation	Enabled
Strict volumetric masks	No
Processing time	1 minutes 42 seconds
Memory usage	2.38 GB

Texturing parameters

Mapping mode	Generic
Blending mode	Mosaic
Texture size	8,192
Enable hole filling	Yes
Enable ghosting filter	No
UV mapping time	1 minutes 55 seconds
UV mapping memory usage	3.14 GB
Blending time	5 minutes 16 seconds
Blending memory usage	2.88 GB
Blending GPU memory usage	1.78 GB
Date created	2023:01:25 07:04:52
Software version	1.8.0.13794
File size	377.44 MB

System

Software name	Agisoft Metashape Professional
Software version	1.8.0 build 13794
OS	Windows 64 bit
RAM	63.92 GB
CPU	Intel(R) Core(TM) i9-9900K CPU @ 3.60GHz
GPU(s)	NVIDIA GeForce RTX 2060 SUPER