

Agisoft Metashape Report

Processing Report
17 December 2021



Survey Data

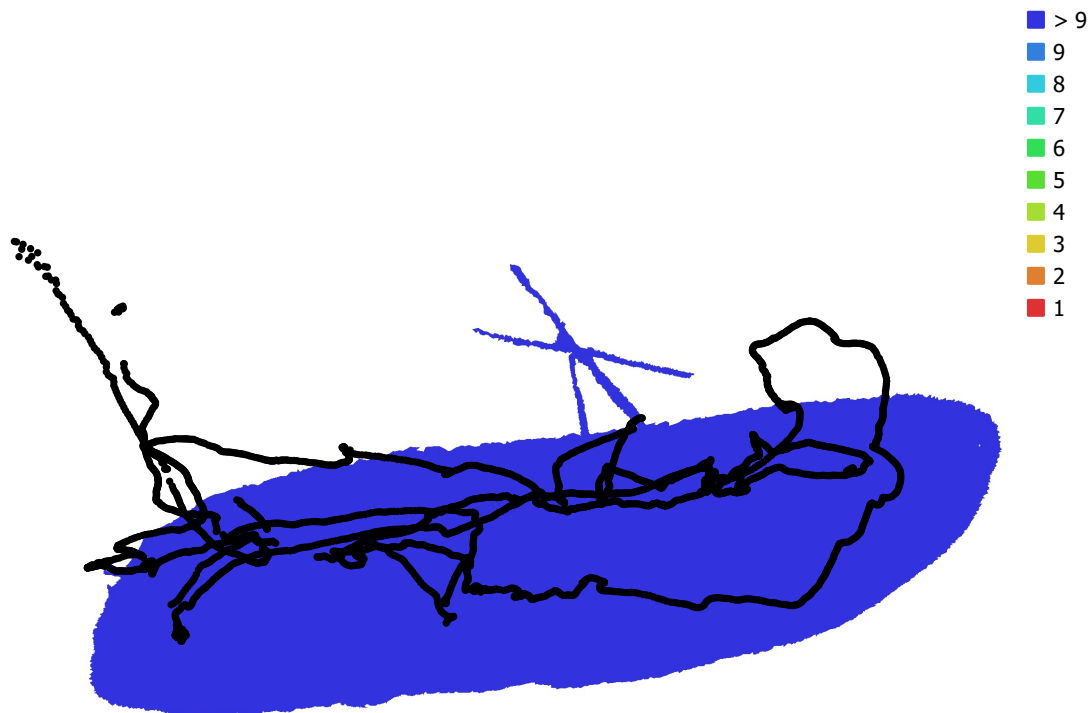


Fig. 1. Camera locations and image overlap.

Number of images: 3,868

Camera stations: 3,856

Tie points: 2,436,394

Projections: 10,268,024

Reprojection error: 45.9 pix

Camera Model	Resolution	Focal Length	Pixel Size	Precalibrated
unknown	1920 x 1088	unknown	unknown	No

Table 1. Cameras.

Camera Calibration

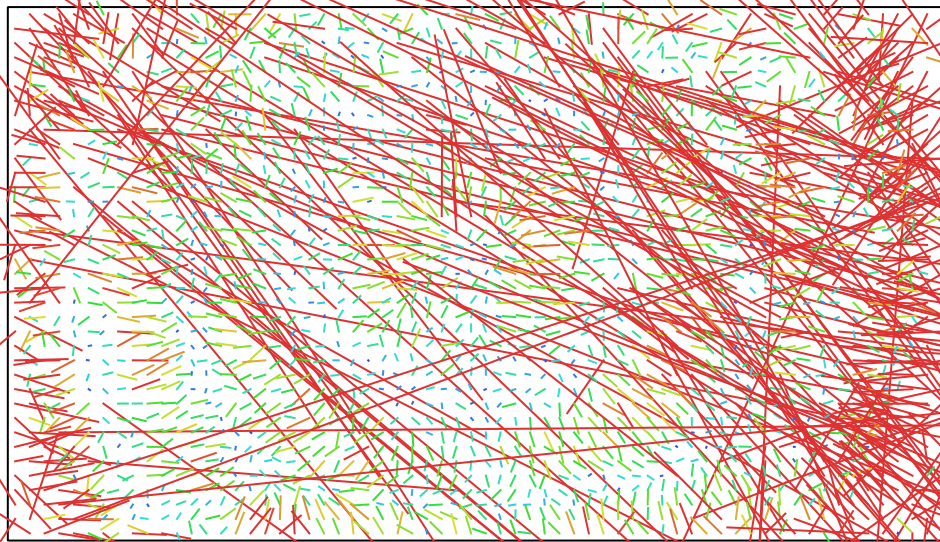


Fig. 2. Image residuals for unknown.

unknown
3868 images

Type
Frame

Resolution
1920 x 1088

Focal Length
unknown

Pixel Size
unknown

	Value	Error	F	Cx	Cy	K1	K2	K3	P1	P2
F	1187.08	0.041	1.00	-0.01	-0.04	0.01	0.13	-0.02	-0.04	-0.02
Cx	-28.8067	0.031		1.00	0.10	0.04	-0.06	0.09	0.60	0.04
Cy	-30.4185	0.051			1.00	-0.04	0.04	-0.01	0.03	0.61
K1	-0.218055	4.5e-05				1.00	-0.94	0.89	0.01	-0.06
K2	0.133257	0.00012					1.00	-0.97	-0.04	0.03
K3	-0.0164586	9.2e-05						1.00	0.06	-0.00
P1	0.000317536	4.7e-06							1.00	0.03
P2	0.000505145	5.3e-06								1.00

Table 2. Calibration coefficients and correlation matrix.

Digital Elevation Model

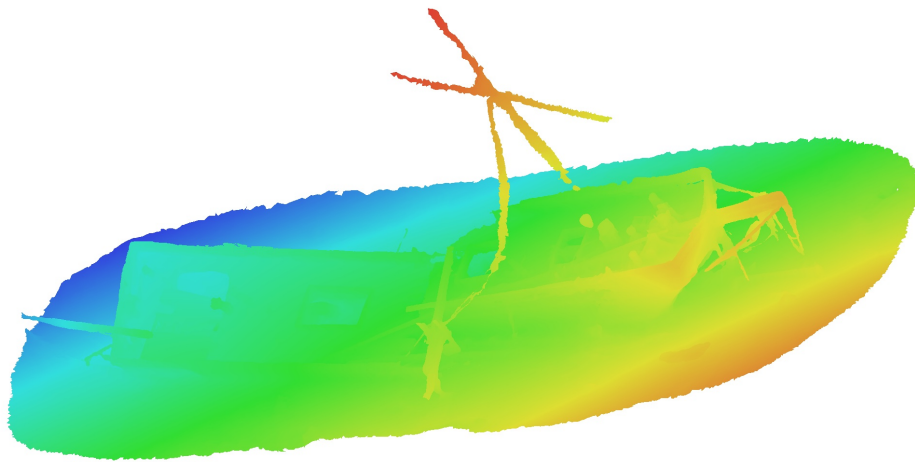


Fig. 3. Reconstructed digital elevation model.

Processing Parameters

General

Cameras	3868
Aligned cameras	3856

Point Cloud

Points	2,436,394 of 2,738,884
RMS reprojection error	16.2909 (45.8858 pix)
Max reprojection error	25719.1 (65690.8 pix)
Mean key point size	3.54354 pix
Point colors	3 bands, uint8
Key points	5.66 GB
Average tie point multiplicity	4.71467

Alignment parameters

Accuracy	High
Generic preselection	Yes
Reference preselection	No
Key point limit	30,000
Tie point limit	4,000
Guided image matching	No
Adaptive camera model fitting	No
Matching time	1 hours 4 minutes
Matching memory usage	1.09 GB
Alignment time	53 minutes 16 seconds
Alignment memory usage	1.30 GB
Date created	2020:04:12 00:43:11
Software version	1.6.2.10247
File size	310.48 MB

Depth Maps

Count	3801
-------	------

Depth maps generation parameters

Quality	High
Filtering mode	Aggressive
Processing time	3 hours 57 minutes
Memory usage	1.45 GB
Date created	2020:04:14 09:53:58
Software version	1.6.2.10247
File size	2.51 GB

Dense Point Cloud

Points	44,708,675
Point colors	3 bands, uint8

Depth maps generation parameters

Quality	High
Filtering mode	Aggressive
Processing time	3 hours 57 minutes
Memory usage	1.45 GB

Dense cloud generation parameters

Processing time	4 hours 14 minutes
Memory usage	15.80 GB
Date created	2020:04:14 14:08:50
Software version	1.6.2.10247
File size	1.45 GB

Model

Faces	3,624,203
Vertices	1,813,634
Vertex colors	3 bands, uint8
Texture	4,096 x 4,096, 4 bands, uint8

Depth maps generation parameters

Quality	Medium
Filtering mode	Mild
Processing time	1 hours 30 minutes
Memory usage	523.36 MB

Reconstruction parameters

Surface type	Arbitrary
Source data	Depth maps
Interpolation	Enabled
Strict volumetric masks	No
Processing time	37 minutes 9 seconds
Memory usage	5.77 GB

Texturing parameters

Mapping mode	Generic
Blending mode	Mosaic
Texture size	4,096
Enable hole filling	Yes
Enable ghosting filter	No
UV mapping time	2 minutes 53 seconds
Blending time	4 minutes 26 seconds
Date created	2020:04:13 00:01:07
Software version	1.6.2.10247
File size	172.93 MB

System

Software name	Agisoft Metashape Standard
Software version	1.7.5 build 13229
OS	Windows 64 bit
RAM	63.92 GB
CPU	Intel(R) Core(TM) i9-9900K CPU @ 3.60GHz
GPU(s)	NVIDIA GeForce RTX 2060 SUPER