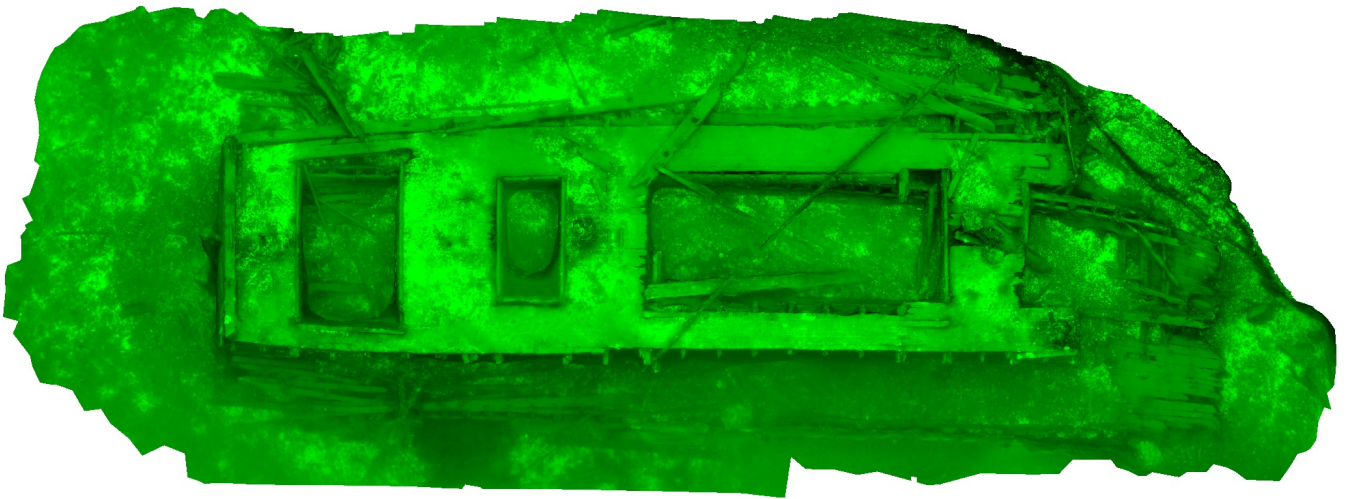


Maggie

Processing Report
21 May 2021



Survey Data

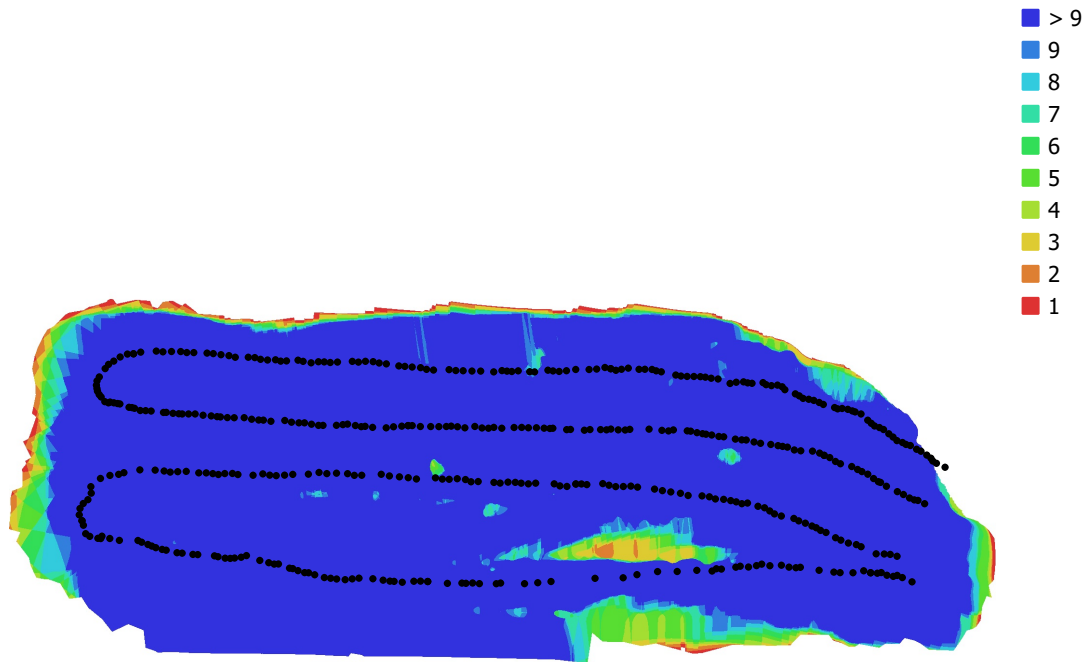


Fig. 1. Camera locations and image overlap.

Number of images: 504

Camera stations: 454

Tie points: 188,630

Projections: 653,848

Reprojection error: 1.07 pix

Camera Model	Resolution	Focal Length	Pixel Size	Precalibrated
unknown	1280 x 720	unknown	unknown	No

Table 1. Cameras.

Camera Calibration

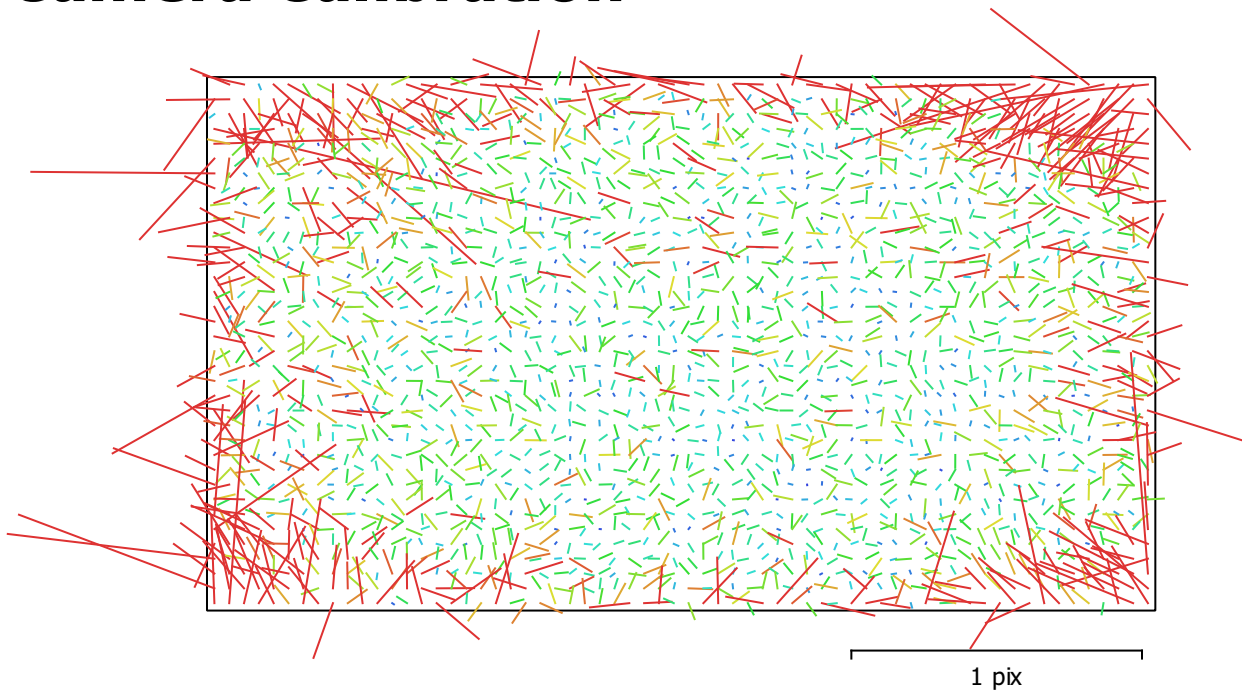


Fig. 2. Image residuals for unknown.

unknown
454 images

Type	Resolution	Focal Length	Pixel Size
Frame	1280 x 720	unknown	unknown

	Value	Error	F	Cx	Cy	K1	K2	K3	P1	P2
F	971.118	0.3	1.00	-0.09	-0.69	-0.29	0.20	-0.07	0.03	0.21
Cx	12.2814	0.12		1.00	0.01	-0.02	0.03	-0.06	0.07	-0.02
Cy	15.7958	0.15			1.00	0.13	-0.09	0.01	-0.05	-0.05
K1	-0.300747	0.00031				1.00	-0.92	0.83	-0.02	-0.29
K2	0.17697	0.00094					1.00	-0.97	0.01	0.09
K3	-0.0397906	0.00091						1.00	0.01	-0.04
P1	0.000100236	1.7e-05							1.00	0.06
P2	0.00065852	2.6e-05								1.00

Table 2. Calibration coefficients and correlation matrix.

Digital Elevation Model

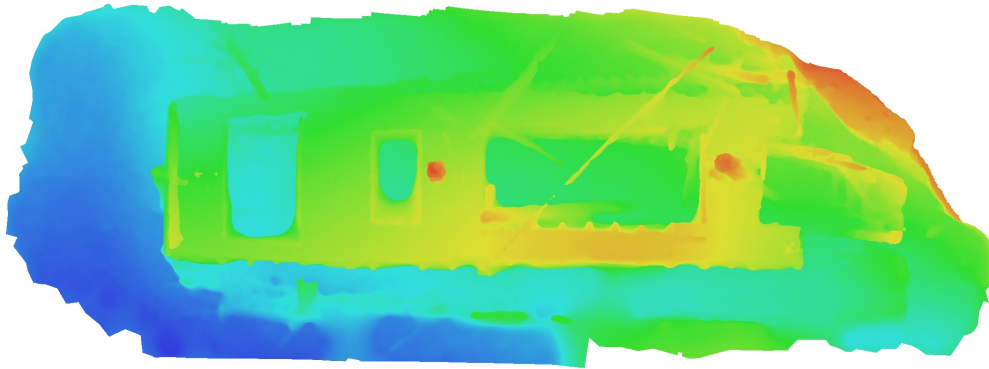


Fig. 3. Reconstructed digital elevation model.

Processing Parameters

General

Cameras	454
Aligned cameras	454

Point Cloud

Points	188,630 of 210,209
RMS reprojection error	0.255193 (1.07165 pix)
Max reprojection error	0.770467 (18.1266 pix)
Mean key point size	4.07827 pix
Point colors	3 bands, uint8
Key points	No
Average tie point multiplicity	3.69898

Alignment parameters

Accuracy	High
Generic preselection	Yes
Reference preselection	No
Key point limit	40,000
Tie point limit	4,000
Exclude stationary tie points	Yes
Guided image matching	No
Adaptive camera model fitting	No
Matching time	3 minutes 18 seconds
Matching memory usage	629.68 MB
Alignment time	2 minutes 53 seconds
Alignment memory usage	112.28 MB
Software version	1.7.1.11797
File size	16.84 MB

Depth Maps

Count	454
-------	-----

Depth maps generation parameters

Quality	High
Filtering mode	Moderate
Processing time	7 minutes 54 seconds
File size	122.33 MB

Dense Point Cloud

Points	8,704,698
Point colors	None

Depth maps generation parameters

Quality	High
Filtering mode	Moderate
Processing time	7 minutes 54 seconds

Dense cloud generation parameters

Processing time	1 minutes 46 seconds
Software version	1.7.1.11797
File size	80.29 MB

Model

Faces	1,017,241
Vertices	509,013
Vertex colors	3 bands, uint8
Texture	4,096 x 4,096, 4 bands, uint8

Depth maps generation parameters

Quality	High
Filtering mode	Moderate
Processing time	7 minutes 54 seconds

Reconstruction parameters

Surface type	Arbitrary
Source data	Depth maps
Interpolation	Enabled
Strict volumetric masks	No
Processing time	2 minutes 34 seconds
Memory usage	5.17 GB

Texturing parameters

Mapping mode	Generic
Blending mode	Mosaic
Texture size	4,096
Enable hole filling	Yes
Enable ghosting filter	No
UV mapping time	4 minutes 24 seconds
UV mapping memory usage	2.63 GB
Blending time	1 minutes 32 seconds
Blending memory usage	493.22 MB
Software version	1.7.1.11797
File size	57.25 MB

System

Software name	Agisoft Metashape Standard
Software version	1.7.1 build 11797
OS	Windows 64 bit
RAM	15.75 GB
CPU	Intel(R) Core(TM) i7-10700 CPU @ 2.90GHz
GPU(s)	GeForce GT 1030