

HUGH KOLB - MR. GLADIOLUS

A perennial exhibitor at the annual glad show of the Port Elgin Horticultural Society, Mr.



Kolb has been a repeated winner in flower shows all over the country even when faced by the stoutest competition. Commencing to show in 1938 when he captured the amateur sweepstakes at Owen Sound, he repeated this triumph at Stratford a year later. He won first prize for his display at the Canadian National Exhibition in 1940 and has been awarded several prizes at the C.N.E. in following years.

Season after season, the riot of colour presented by the blooms in his extensive garden has proved to be an alluring magnet drawing a host of flower lovers to what has been aptly termed the Gladiolus Centre of Western Ontario.

Mr. Kolb was a native of Kitchener, married the former Edna Byers of Port Elgin in 1932. Although gladioli culture was his chief hobby as well as his vocation, he was an enthusiastic hockey and baseball fan. He died August 10, 1958.

DOUG SCHLENKER

Owning his own railway---- a dream is coming true.

Doug remembers that when he first proposed the idea of a railroad in the park, there was not too much enthusiasm for the project among the town's elected officials or the business community. However, he continued to build his engine even though there was no certainty that he would have a place to run it.

By the time it was ready in August 1973, he had been able to get support to build the basic track in the North Shore Park on Port Elgin's waterfront.

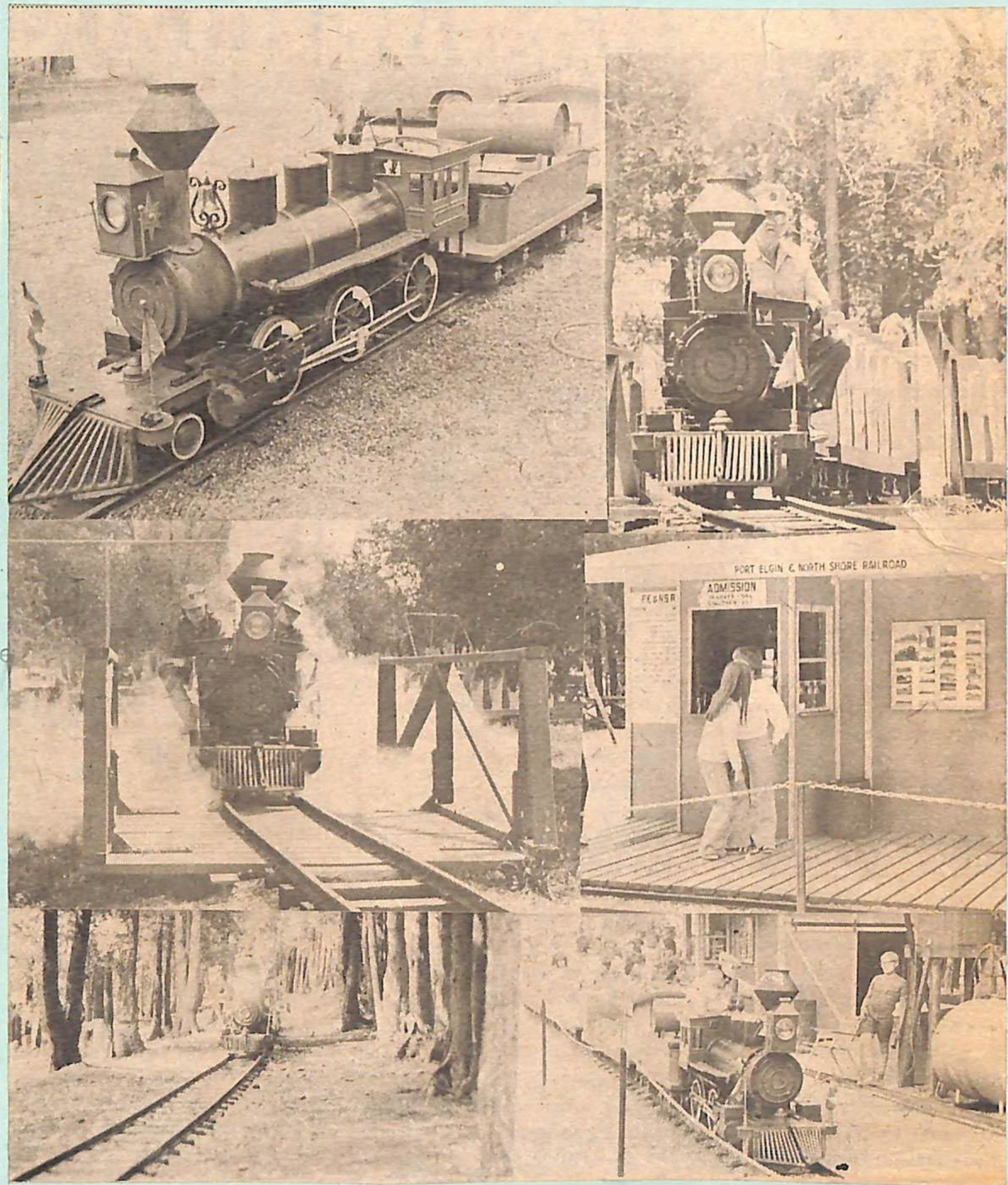
There were more than 27,000 passengers travelled the North Shore Miniature Railway in 1975-50% of whom were adults.

Doug said the whistle is blown only when necessary such as when it comes into the station or sometimes in crossing the bridges or when someone is near the track and unaware of the coming train.

Doug has been interested in railways and engines ever since he can remember and attributes this to the location of his father's shop right across from the railway tracks. He remembers watching the four passenger trains which used to stop at Port Elgin each day.

Trains have always fascinated him and he has been making them in varying degrees ever since he learned to use his father's lathe at 8 years of age and began 'tinkering' with bits and pieces left over in the shop.

The Port Elgin and North Railroad, the largest operating steam railway in Canada was sold in 1978 to Jerry McArthur, owner of the Scenic Caves and moved for the most part to its new location near Collingwood.



Train and station