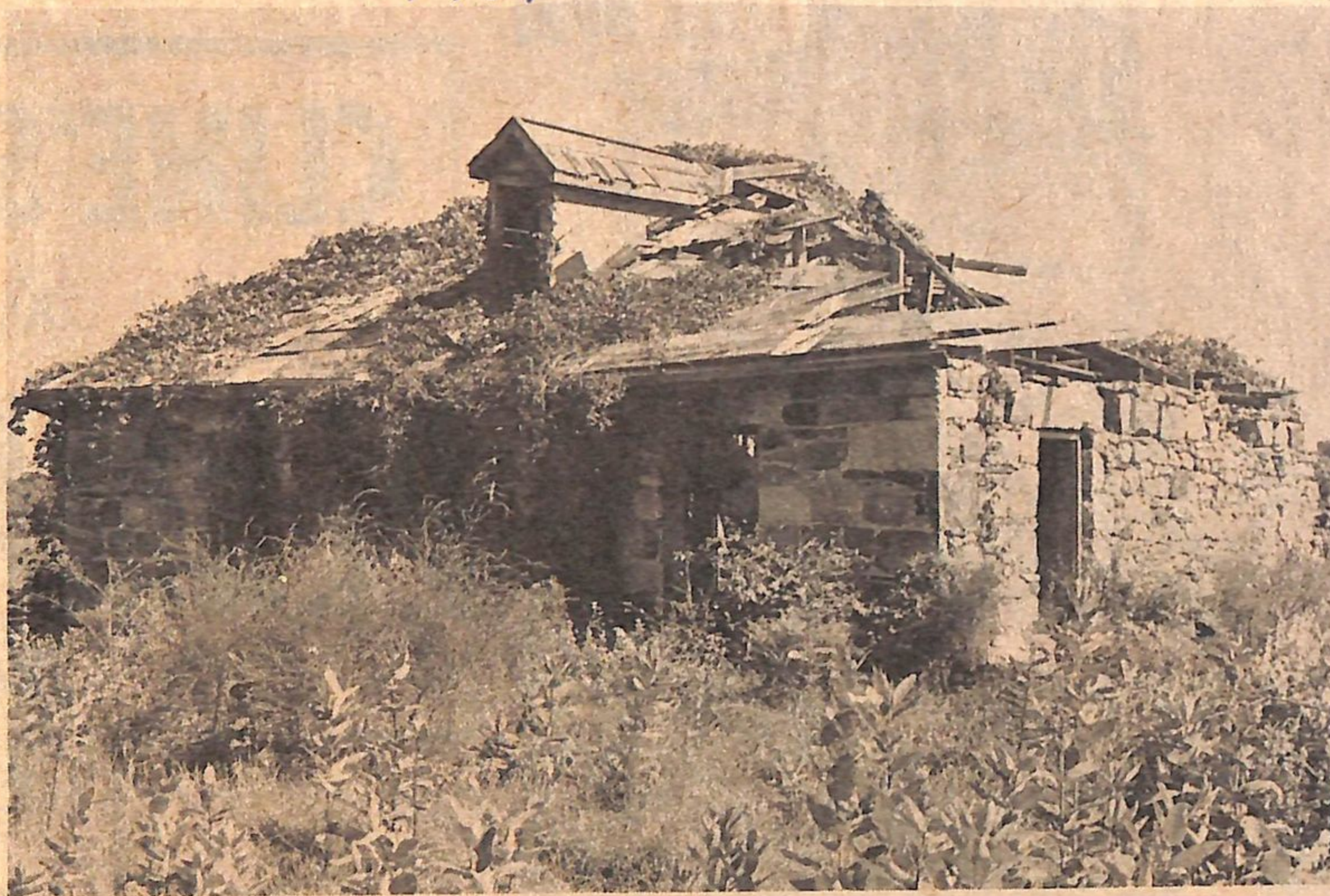


STILL IN USE, AFTER MORE THAN A CENTURY is this log home on the 7th concession of East Nissouri Township. Well kept up, complete with flower beds, the house is occupied by Miss Margaret Newman.



THE HOUSE ON "BETSEY'S HILL" — This remains of what must have been at one time a handsome rural home, lies just east of Lakeside opposite the Donald Seaton farm. The last occupants of the house were the Noon family some of whose members still live in the Lakeside, Thamesford and Granton areas. Many Lakeside area residents remember the hill on which the house is situated as "Betsey's Hill". Anyway, wreck or not, the house looked like a very picturesque subject to the Journal-Argus junior photographer who turned out this picture of it recently.