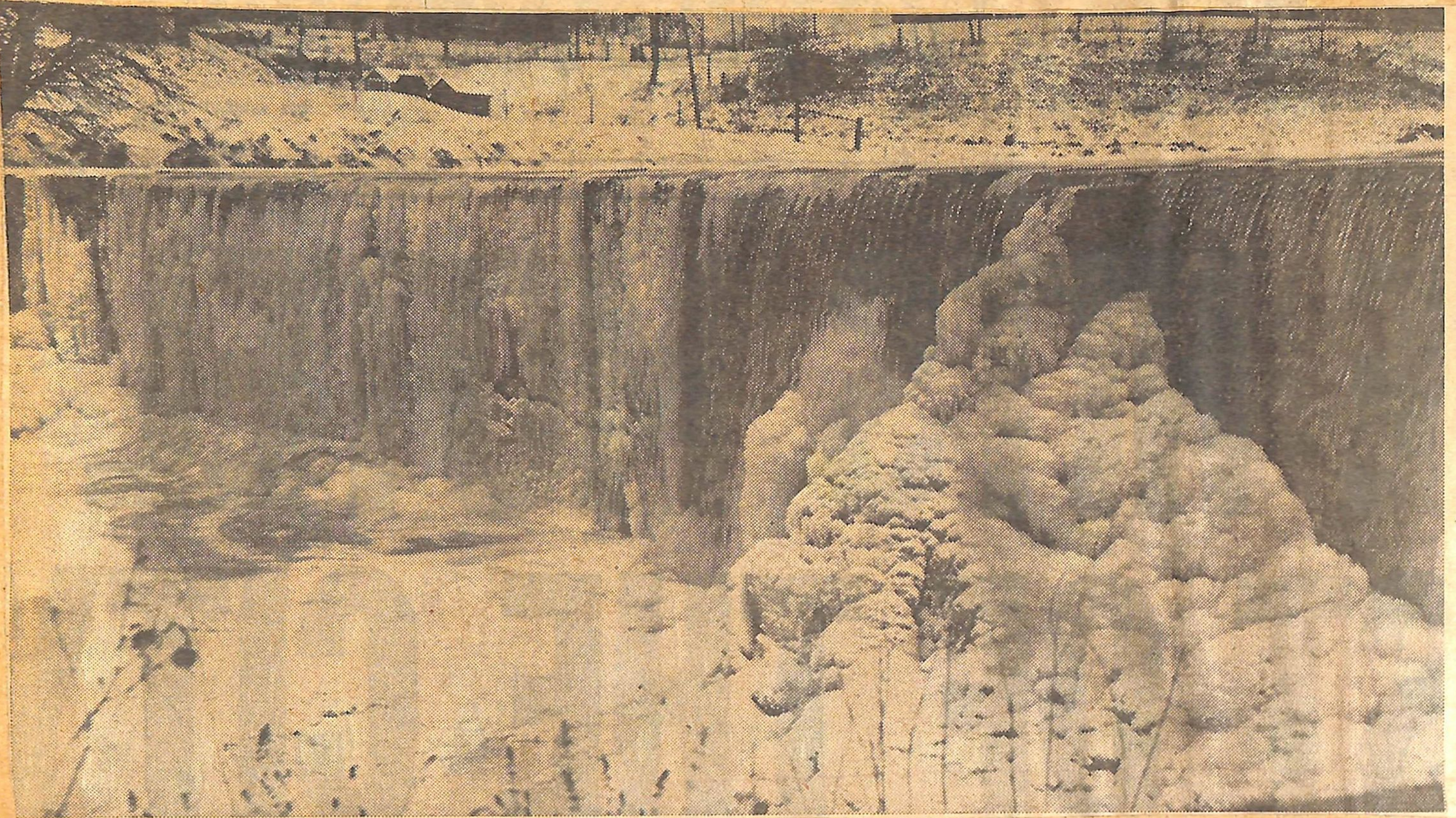


OXFORD HISTORICAL SOCIETY REVIEWS PAST -- AND PRESENT



Upper left photo shows the dam that supplied the power to run the mill, upper right, built in 1854, to grind the grist to feed the families of the pioneers. Lower left pho-

to is a symbol of the early days Mr. and Mrs. George Nichols, Burgessville, with their coal oil lamps, they won't accept hydro, they just don't want it. Upper photos

are on the Otter Creek at Otterville, centre of the earliest settlement in Oxford county. The teapot Mrs. Nichols is holding is well over 160 years old.