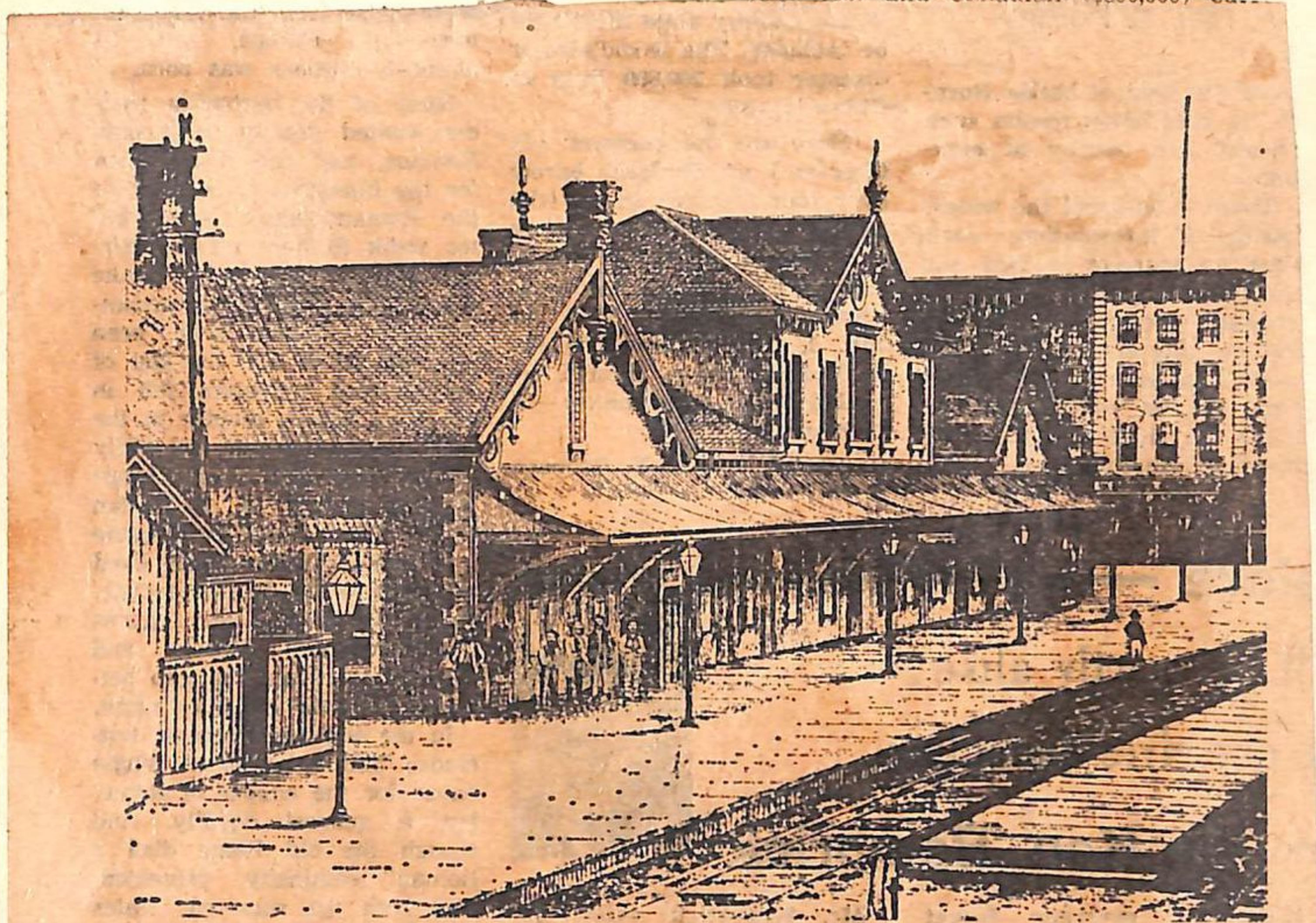
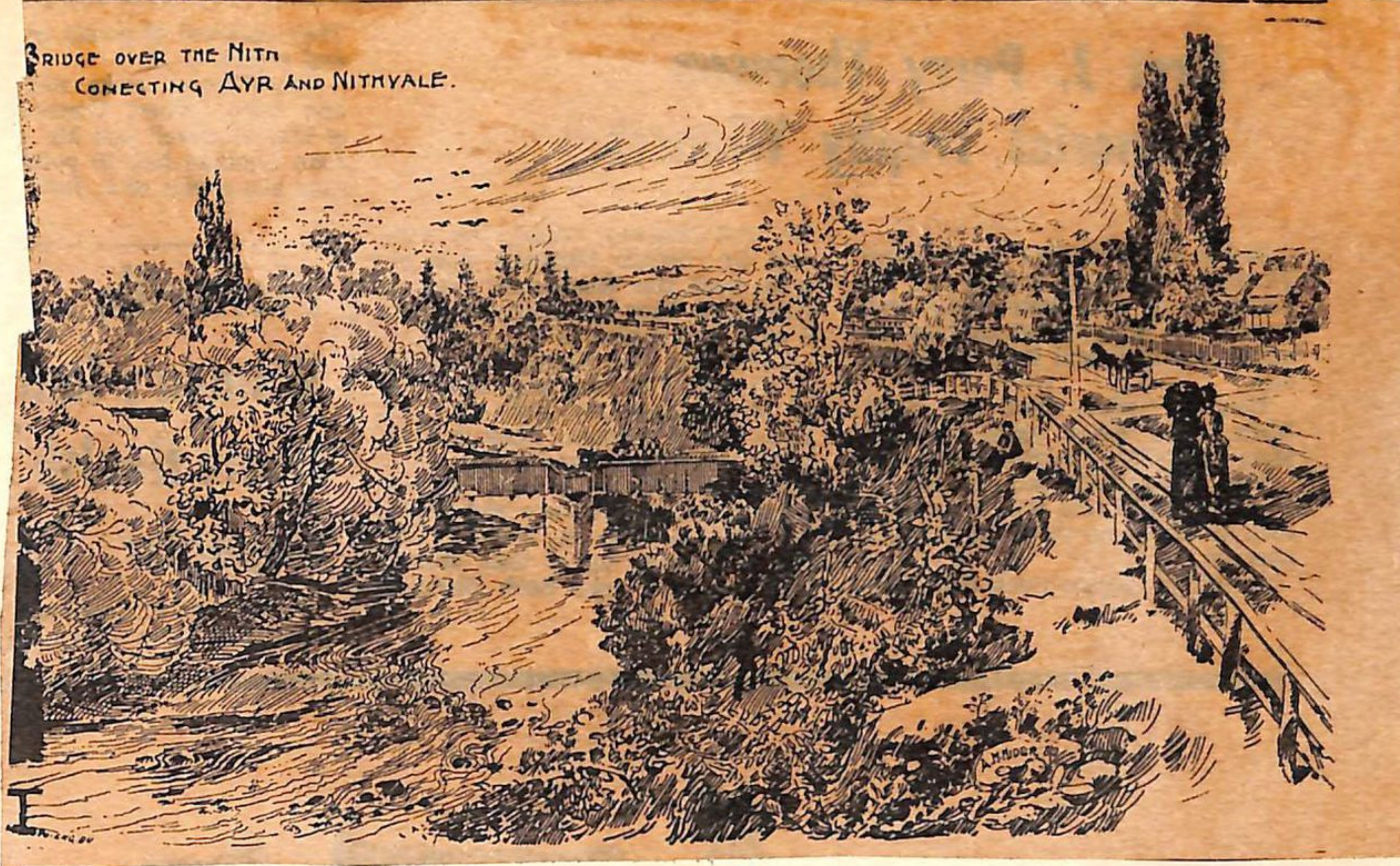


BRIDGE OVER THE NITH
CONNECTING AYR AND NITHVALE.



This picture taken at the old Great Western station (later the GTR and CNR in London) shows the third rail, inaugurated by the Great Western in 1867, to help speed the movement of American freight from the Mississippi to the Atlantic (or vice versa, depending on the shipment origination).

STRAYED!

CAME into the premises of the Subscriber on Lot No. 15, 8th Concession, Blenheim. A yearling Heifer, spotted red and white. Owner must prove property and pay charges.

ROBERT HAMMILL,

Dec. 19th 1866

SCOTT & COWAN,

Will At All Times Pay

The Highest Cash Price!

FOR GOOD MERCHANTABLE

Peas, Barley &c.,

DELIVERED

AT THEIR STOREHOUSE,

PRINCETON.

THOS. COWAN,

J. W. SCOTT.

Princeton, Sept. 15th 1866.



THE MANSE GLEN MORRIS

Built in 1855