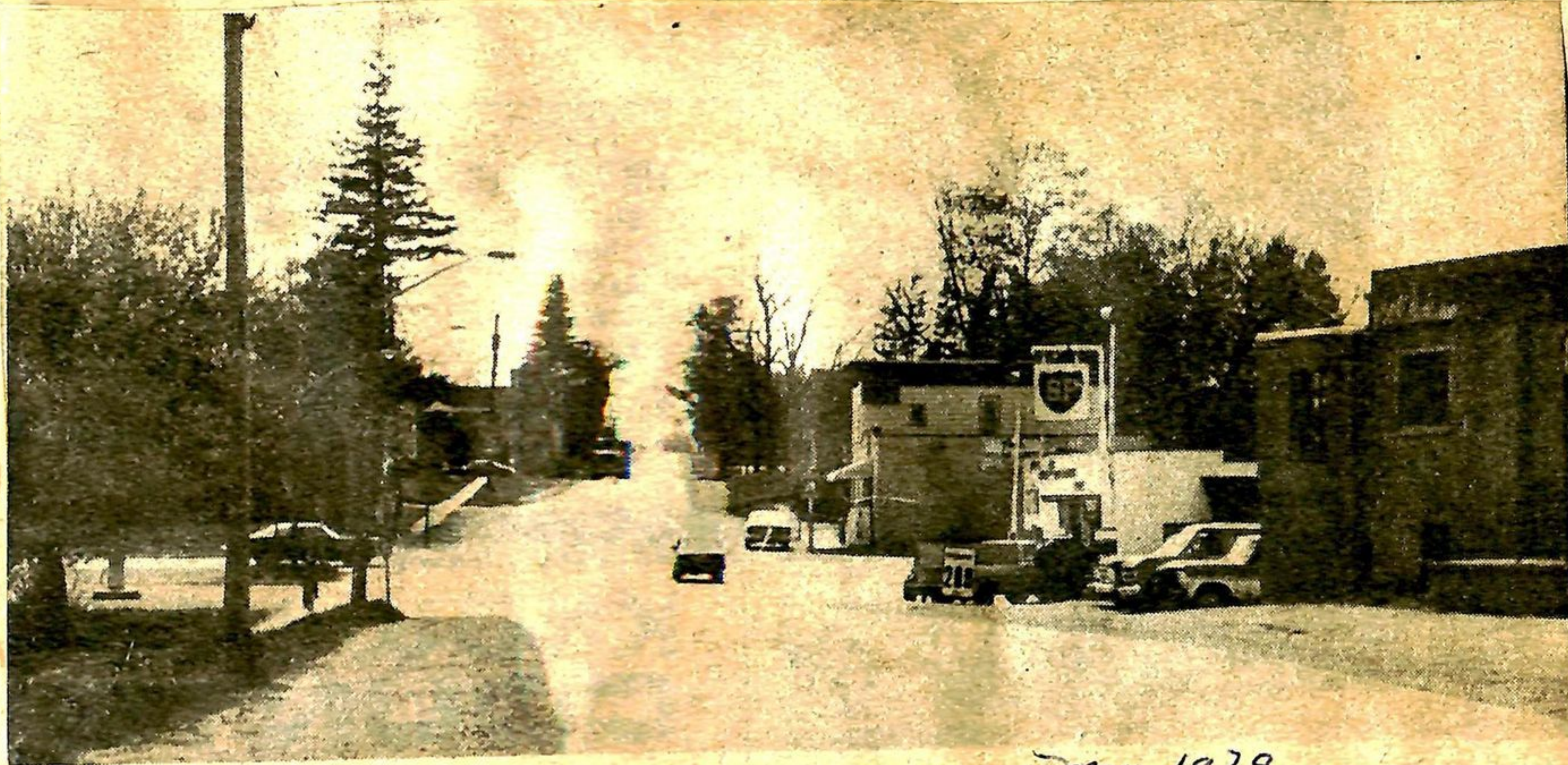


A view of the western approach to the village. *May 1979*

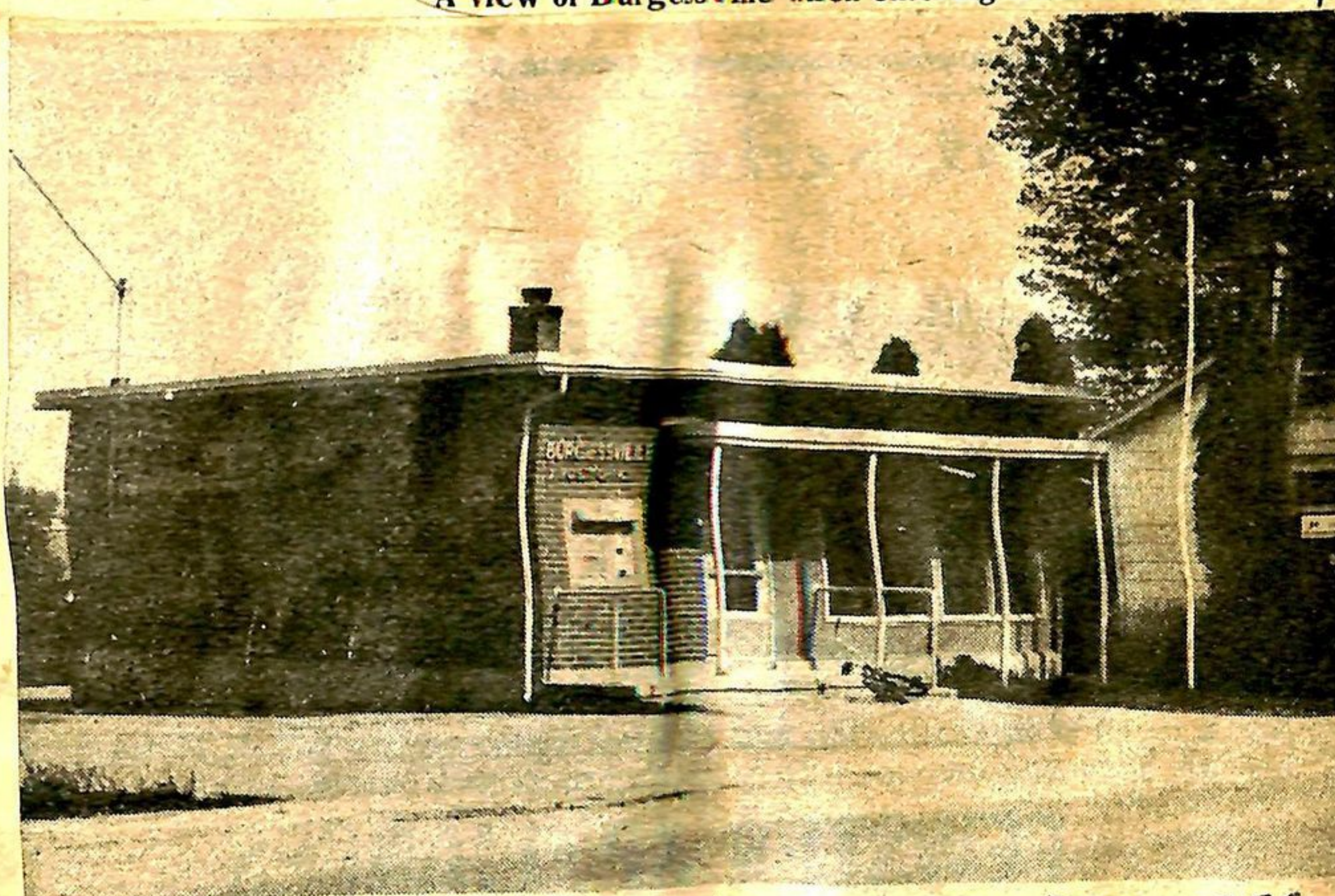


A view of Burgessville when entering from the east. *May 1979*

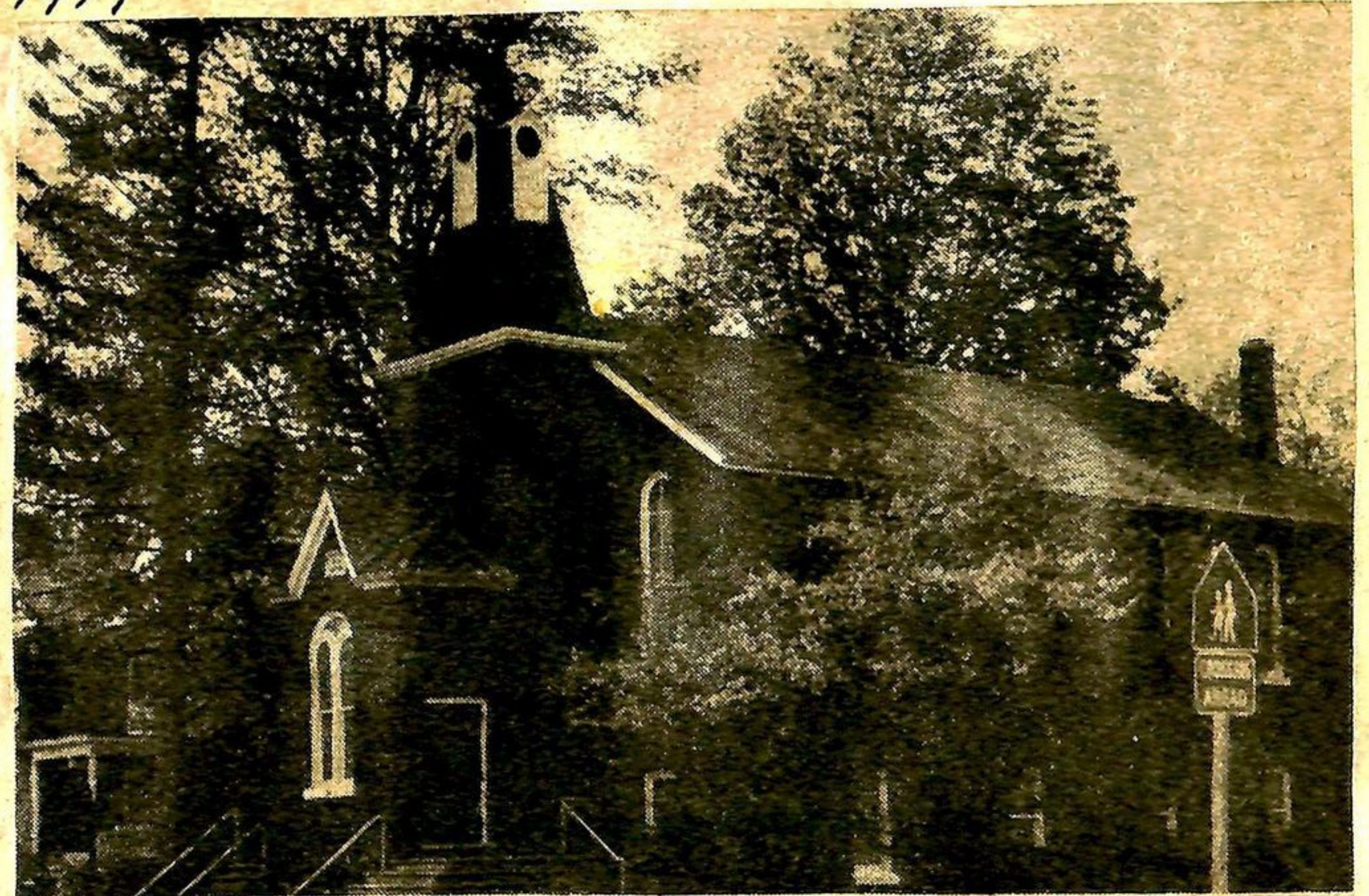
NEWS TODAY *May*



Wally Orth, seen here with his family, was struck with polio when he was a youngster and says immunization should be compulsory. See Page 3 story.



Burgessville's post office is located south of the main intersection. *May 1979*



On the eastern entrance to the village is Burgessville United Church.



Burgessville Library (North Norwich), located on the main intersection. *May 1979*



Burgessville Baptist Church is located just west of Burgessville. *May 1979*