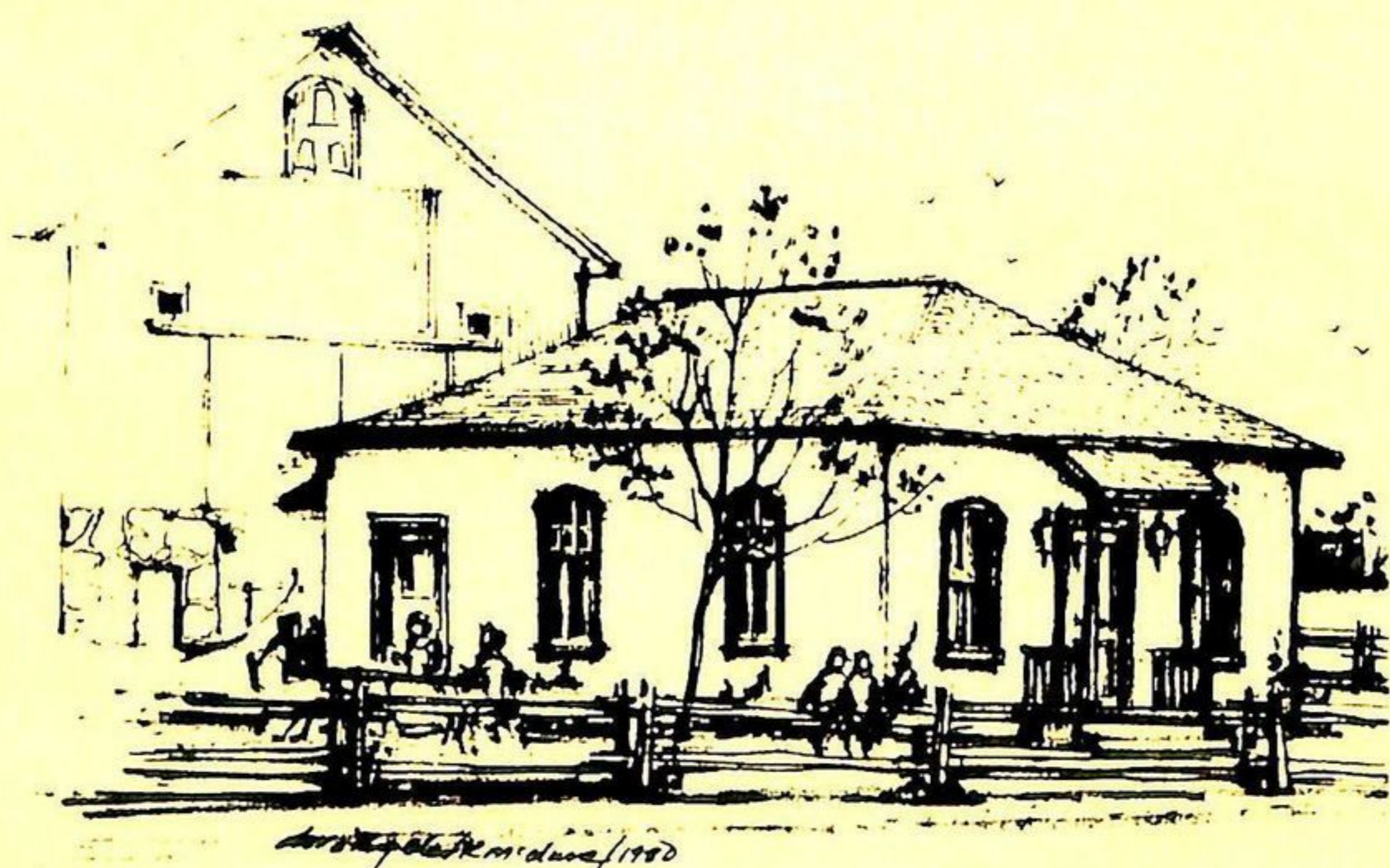


**flannels
flails and
fanning mills!**

**ONTARIO'S RURAL HISTORY
COMES ALIVE AT THE
ONTARIO AGRICULTURAL
MUSEUM!**



The Octagonal Barn (c. 1885)



The Women's Institute Hall (c. 1838)

COME SPEND A DAY WITH US

**OPEN: MAY 17 to OCTOBER 11, 1982
HOURS: 10 A.M. to 5 P.M. DAILY**

LOCATED ON HWY. 401 AND TREMAINE ROAD, MILTON.
TAKE EXITS No. 38 OR No. 39.
FOR FURTHER INFORMATION CONTACT:
ONTARIO AGRICULTURAL MUSEUM
P.O. BOX 38
MILTON, ONTARIO
L9T 2Y3
416-878-8151

A PROJECT OF **THE ONTARIO MINISTRY OF AGRICULTURE AND FOOD**

