

KEEPING A PART OF ONTARIO'S HISTORY

The attractive house and handsome barn on the research land adjacent to the London Research Centre (Pack's Lane) make a fine field laboratory and equipment barn.

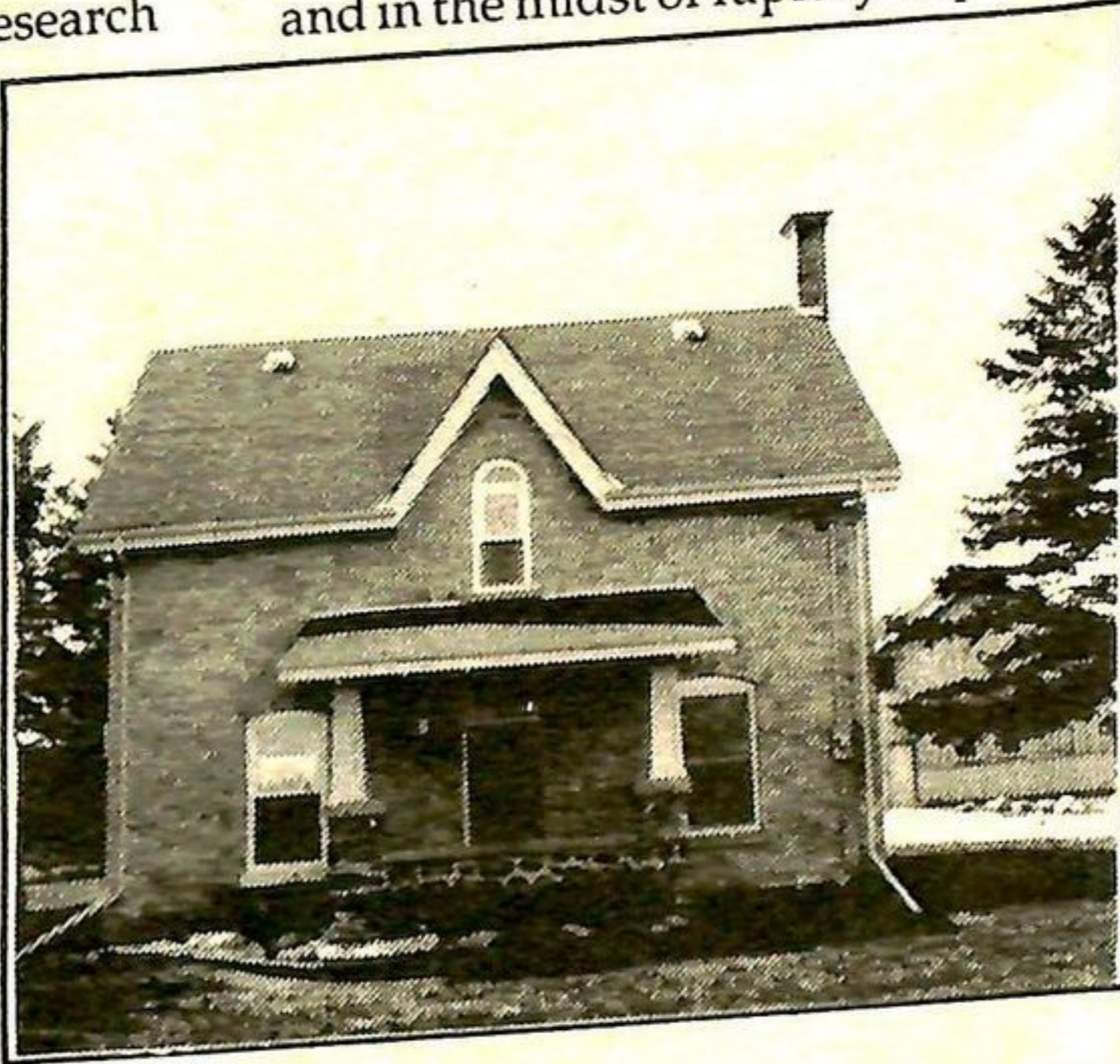
They were almost torn down! When Agriculture Canada acquired the property in 1985, the structures were in pretty bad shape. It took imagination and persuasion to show how the house and barn could enhance the research facilities while still preserving a part of history.

See the history of the area and the Pack family on display.

The Pack family owned and ran the farm for four generations, starting with William Pack who took over the farm in 1892. For many years, the

1990 house (built shortly thereafter) was surrounded by vegetables for their market garden business. George Pack later added dairy operations.

The presence of a farm setting beside the new laboratory and in the midst of rapidly-expanding subdivisions is an apt reminder of the objective of Agriculture Canada research to serve the agricultural community and ultimately the urban population it supports.

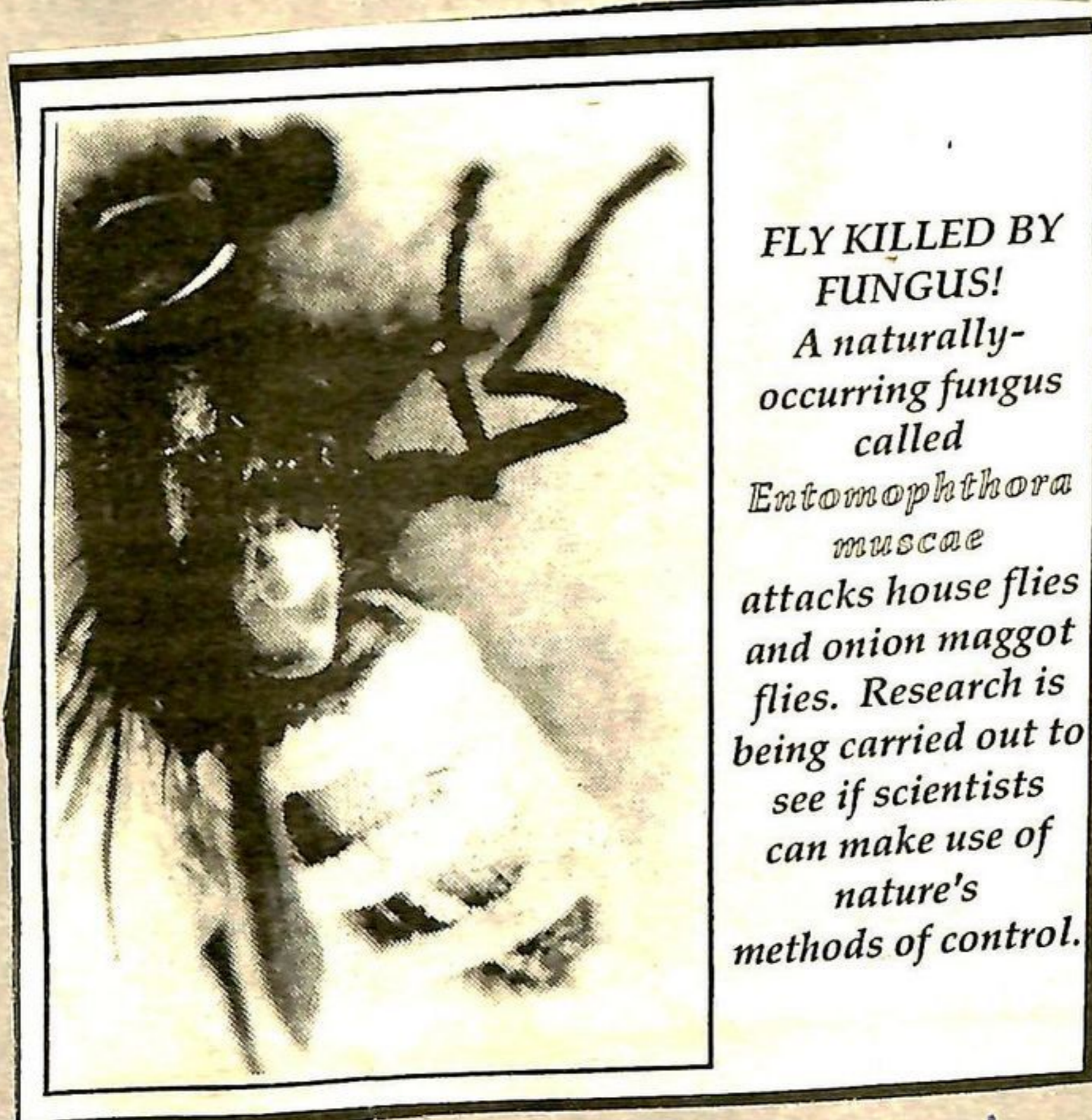


The house and barn at the Research farm were renovated in their former style.



Birr Members

Back Row, Mina Adams, Mary Rhame, Eileen Van Meer, Dorothy Dobbie
Front Row Evelyn McClary, Aleda McComb (President), Jean Fones (Secretary), Ivey Clode



FLY KILLED BY FUNGUS!
 A naturally-occurring fungus called *Entomophthora muscae* attacks house flies and onion maggot flies. Research is being carried out to see if scientists can make use of nature's methods of control.

Agricultural Research - Making use of nature's method of control