

GOLDEN RULES

1. If you open it, close it.
2. If you turn it on, turn it off.
3. If you unlock it, lock it up.
4. If you break it, admit it.
5. If you can't fix it, call in someone who can.
6. If you borrow it, return it.
7. If you value it, take care of it.
8. If you make a mess, clean it up.
9. If you move it, put it back.
10. If it belongs to someone else and you want to use it, get permission.
11. If you don't know how to operate it, leave it alone.
12. If it's none of your business, don't ask questions.
13. If it will brighten someone's day, say it!

Sept./90 - Tour Agriculture Research Station (London)



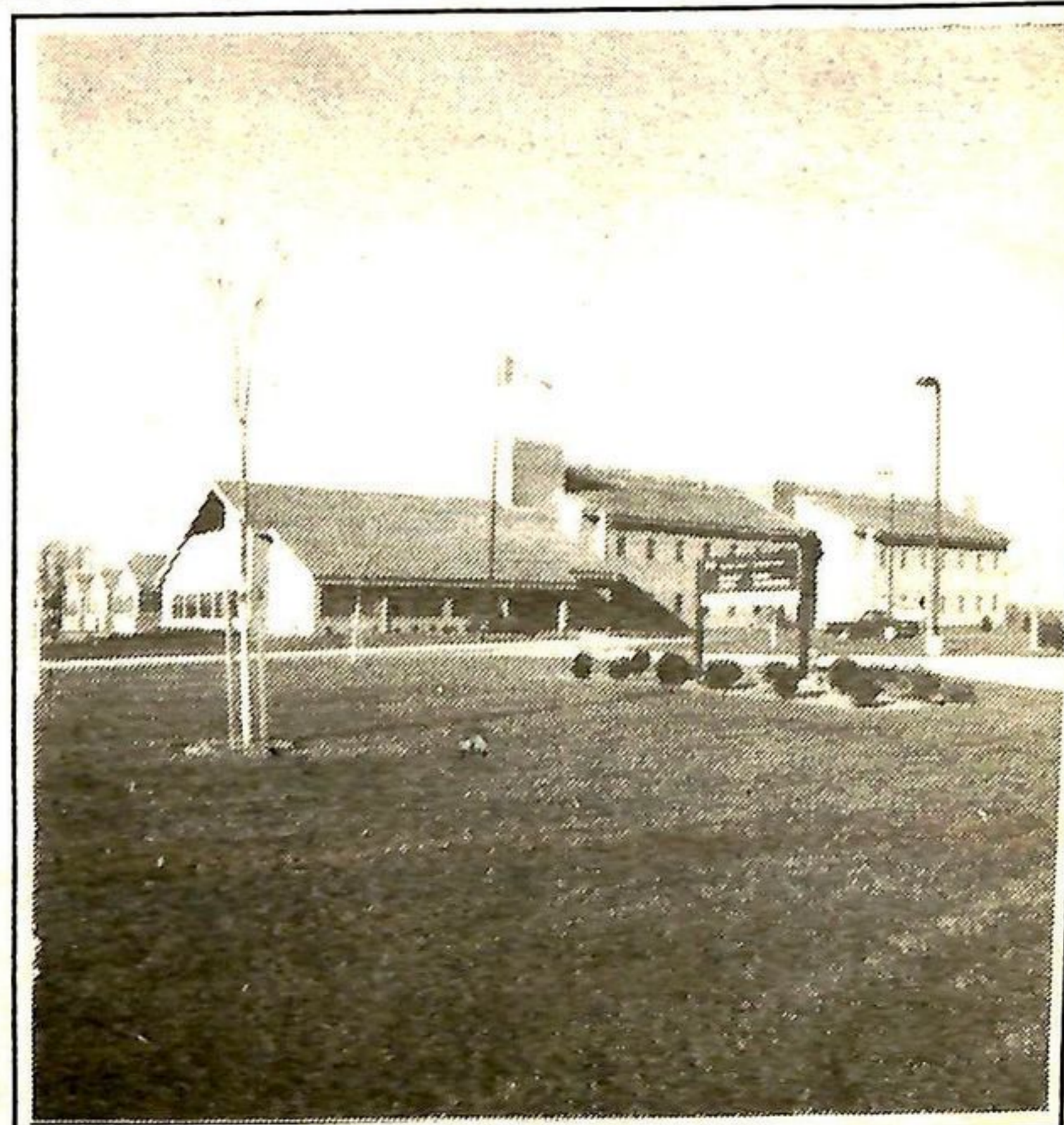
Birn Institute Meeting Sept 90

LABORATORY ¹⁹⁹⁰

LABORATORY serving southwestern Ontario, Canada and the world

The new Laboratory provides much-needed facilities for the Soil Pesticide Section of the London Research Centre. The new building (architect, Norbert Schuller; contractor, Ellis-Don) is situated on Pack's Lane northeast of Huron and Highbury at the edge of the City of London, Ontario. It is easily accessible to growers, the public, and visiting scientists from all over the world. Research carried on by this team, headed by Dr. C.R. (Ron) Harris, has two main objectives: integrated pest management and environmental toxicology. The purpose is to insure that southwestern Ontario farmers will have the most effective measures available to them to control insect pests that attack their crops, that the amount of insecticides used for crop protection is reduced, that chemical pesticides (insecticides, herbicides, fungicides) do not cause environmental damage and that the consumer will not be exposed to unacceptable levels of pesticide residues in food.

Results of research at the Pack's Lane Laboratory are of interest to people across Canada and around the world who face common issues such as insecticide resistance, crop loss, and environmental contamination. Although researchers in other parts of the world may be concerned with different crops and insects, the staff at LRC share with them the mutual goal of finding solutions to these agricultural problems.



The Pack's Lane facilities now house the Soil Pesticide Section of the London Research Centre.

The excellent reputation that the London Research Centre enjoys on local, national, and international levels will be enhanced by the addition of the new Lab.