

This quaint memorial stands in the old Methodist cemetery near Armow in Kincardine Township. With grave-stones of pioneers imbedded in it, the structure honors early settlers of the district.

## Quaint Memorial Honors Armow District Pioneers

By Merrill Cantelon

A glowing tribute to pioneers of the Armow district can be found in a little old Methodist cemetery near the hamlet.

Situated in a field beside the road, where the old Methodist church used to stand, is an ivy-covered open type mausoleum, imbedded with slabs. Here one finds weather beaten tablets encased in the cement structure with inscriptions dating back to the 1800's, still readable to the public and open to the stars.

The unique edifice contains 16 slabs, imbedded in upright position around the inside, with three at one end on the outside and two at the opposite end. Inscribed names such as Shewfelt and Gilroy silently recall to the present generation that the original settlers have done their part and are at rest.

Situated in Kincardine Township, the structure is patterned on a similar memorial at Galt and was engineered by R. B. Scott, in 1929. Mr. Scott, a life-long resident of Armow, recalls that at one time picket fences surrounded the graves. Some of the slabs had fallen over so action was taken to erect a fitting memorial. The slabs were removed from the graves and imbedded in the open tomb.

Gilroy is one name which

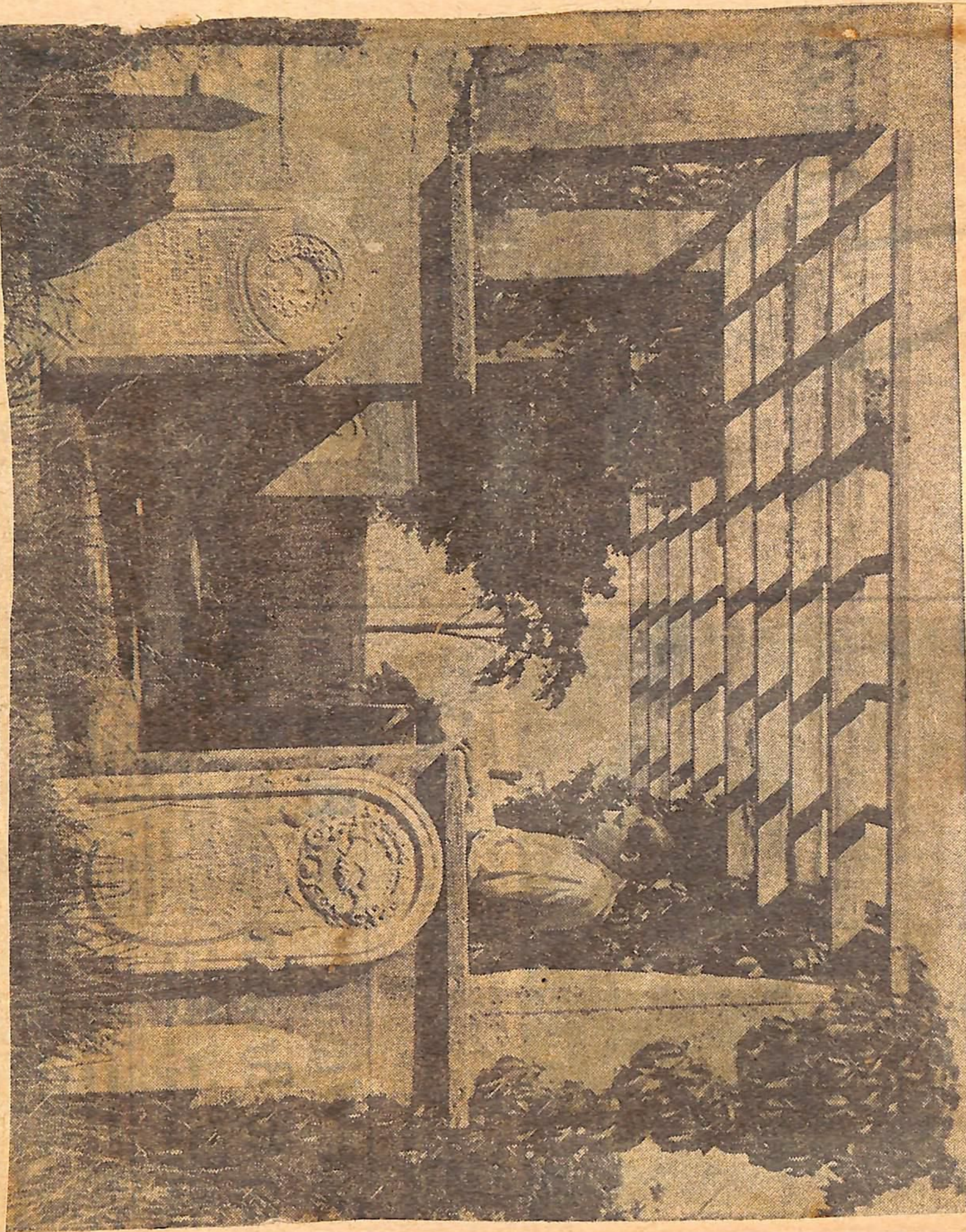


**R. B. SCOTT**  
- - - engineered job

stands out among the district pioneers. In this cemetery lie buried Nelson Gilroy (died 1860); Ann Gilroy (1886); David Gilroy (1891), and Isabella Gilroy, wife of L. Shewfelt.

Kincardine Township can well be proud of their part in having this memorial erected.

And to R. B. Scott, whose wife's mother was a Gilroy, the sacredness of the spot means much.



Armow District Pioneers Honored In Stone 1954 <sup>Scap</sup> 3-1