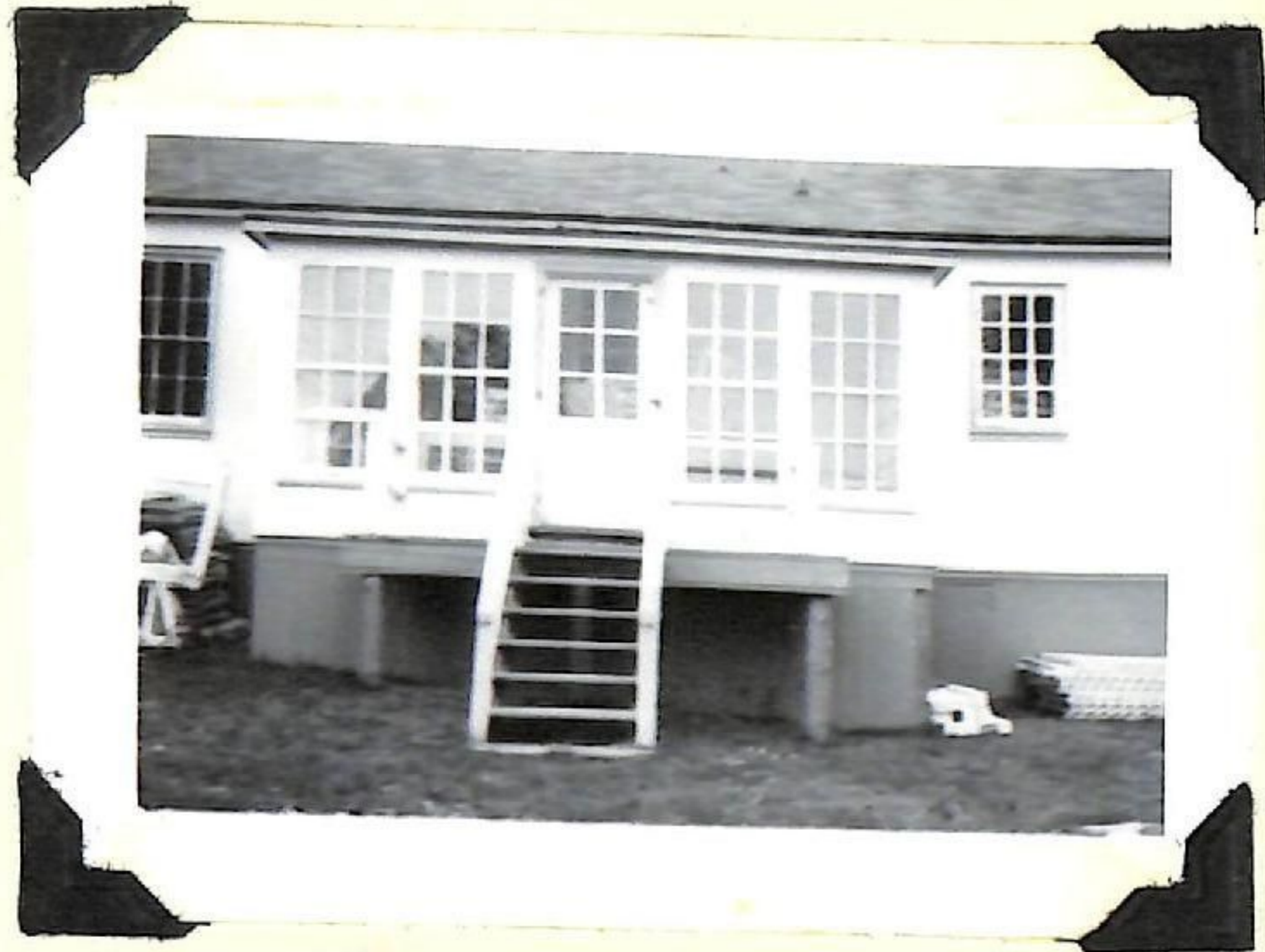


Then and Now at the M. C. C.



at Left - Building was used as a surgery during W.W.#2 for P.O.W's. Then the residence of Bursar at M.C.C. now has been demolished.

Residence of Superintendent of M.C.C. (R)



(L) New residences built for guards families to replace the old apt Bldg demolished in 1973. 16 units built. Bldg's are erected on grounds which formerly housed the P.O.W. huts. (at left, Bachelors quarters)