

Enjoy Cochrane's Parks

(From pg. 12)

northwest of Cochrane—this park, with an area of 13,220 acres, is situated on a sand esker ridge which rises 150 to 200 feet above the surrounding 26 lakes. These are deep, springfed lakes, and feature a variety of fishing. Their clear water often permits close observation of fish and other aquatic life.

The park has picknicking

facilities for about 100 parties and 107 camp and trailer sites. Other facilities include a trailer sanitary station, change houses, and a shower and laundromat. Supplies and canoe and boat rentals are nearby. Docks are available on several lakes, and there are extensive walking trails and an active Naturalist Program. There is no development north of Bear Lake. Access to wilderness campsites is by hiking trail

only.

Lloyd and Blue Lakes—Lake trout.

Park, Green, Wiskin, Kidney and Bear Lakes—Speckled trout.

Green Lake—A fine view of this green-tinted lake may be had from the road which straddles a sand ridge. Picnic facilities and bathing beach.

Sandbar Lake—Perch

Horseshoe Lake—Pike

Leroy Lake—Rainbow trout.



Mobile home

While riding the four hour long train ride on the Polar Bear Express, visitors can view the homemade tents, lean-to's and other amazing buildings. This tent is being held up by Indian ingenuity. Back in the 1600's when steel poles were not thought of the natives would use the branches of trees to hold up their tents.

BEAUTIFUL VIEW ?



PREVENT WILDFIRES
THE VIEW SPOILERS!



CARRIERE'S SUPERMARKET LTD.

'where shopping is a pleasure'

- *The finest in meats, groceries, fresh fruits and vegetables
- *Block ice for sale & cubes
- Free parking



ALL YOUR BARBECUE
and
OUTDOOR COOKING NEEDS

'Just past the Post Office' on
180 6th Avenue Cochrane



CHIMO MOTEL

Welcomes all
visitors to Cochrane
and the
POLAR BEAR EXPRESS

- * 17 Rooms
- * 12 Kitchenettes
- * Satellite TV

Hwy 11 west Cochrane
272-6555

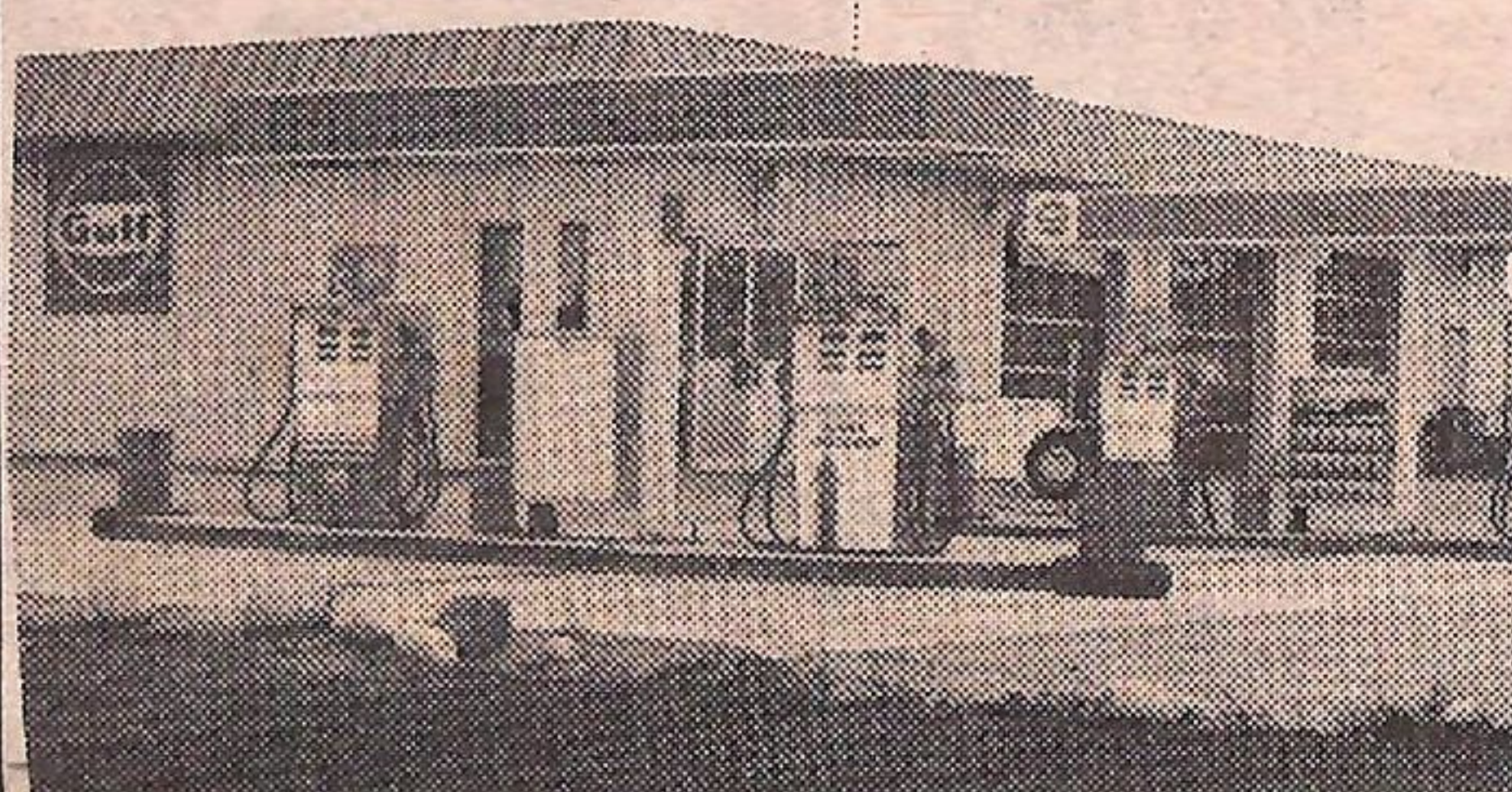
We hope you enjoy
your stay in
Cochrane

"Home of the Polar Bear Express"

Management and Staff

**Cochrane
Public Utilities
Commission**

Your Radial Specialist



NEW LOCATION

Hwy 11 W. Cochrane 272-4303

also specializing in

5 Minute Car Wash

**NOW OPEN
'TILL 10 P.M.**



Specializing

- ELECTRONIC TUNE-UP
- BRAKE & FRONT-END
- EXHAUST SYSTEM
- WHEEL BALANCING
- HEAD LIGHT AIMING

**TOWING
"WE HURRY"**