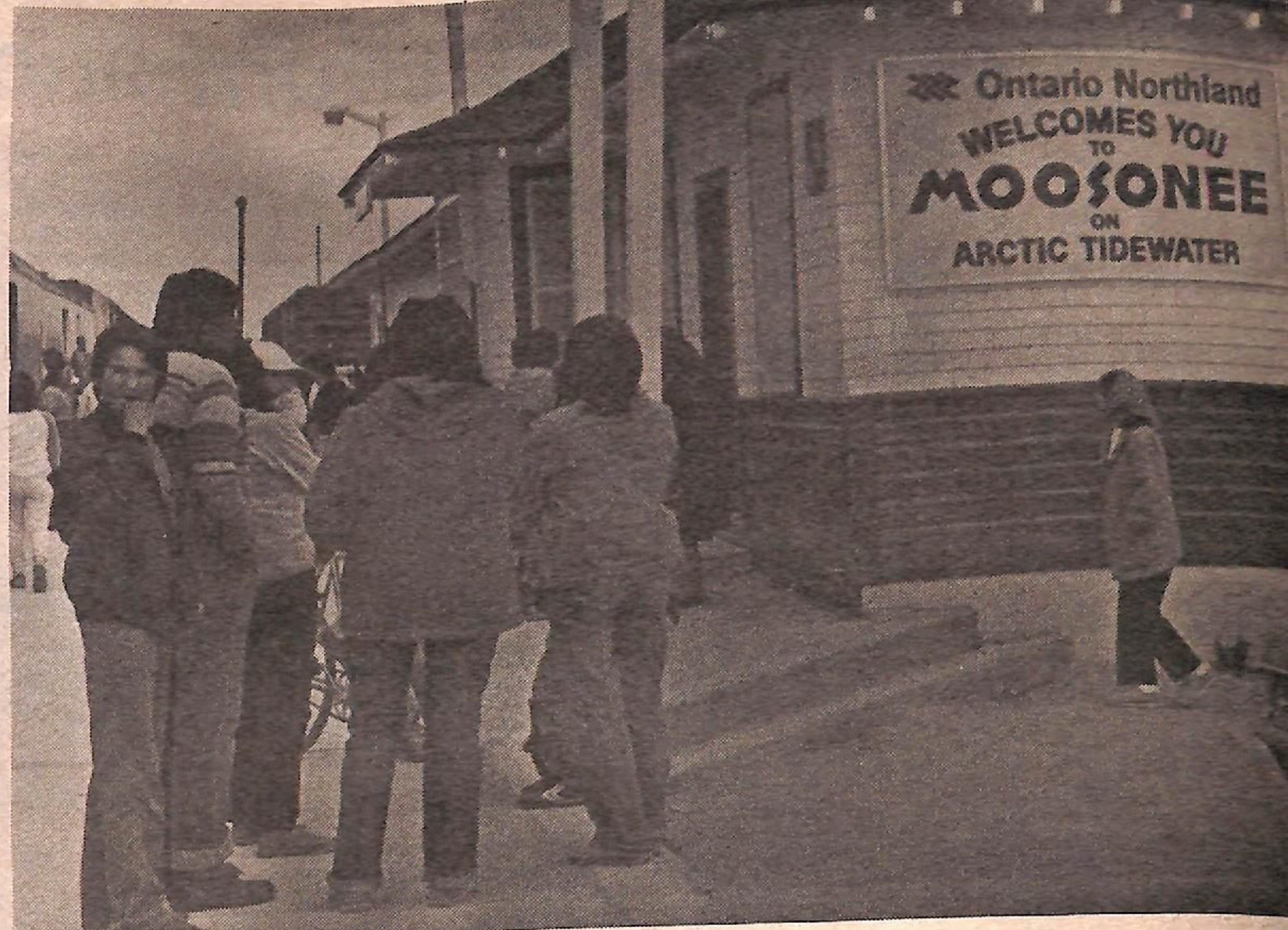


First stop

The Polar Bear Express, every day, except Friday, stops at an Ontario Hydro dam at Otter Rapids so that tourists may look, take pictures and gasp for air to see such a structure. The dam was built in the late 50's and completed in early 60's.



At the end of the line

The ONR station in Moosonee is as far as one can go by rail. There is always a crowd as it is like a welcoming committee waiting to see what today's train has brought. Other than air, rail is the only means of transportation in and out of Moosonee.

SPINNING WHEEL

RESTAURANT & TAVERN

Completely Renovated

John Polizogopoulos, the chef and staff will be pleased to serve you. Fast friendly service, good food, pleasant atmosphere, and.....

"THE PRICE IS RIGHT"



SEAFOOD BUFFET

All you can eat

\$19.95

SUNDAY BRUNCH

All you can eat

\$5.25

"JOHN'S PIZZA & SPAGHETTI HOUSE"



PIZZA
SPAGHETTI



LASAGNA
RAVIOLI

Sunday - Thursday 4:00-12:00

Friday - Saturday 4:00-2:00

FREE DELIVERY (order over \$7.00)
Less than \$7.00, \$1.25 delivery charge

Phone 272-3055

135 3rd St.

Cochrane



**Licensed under L.L.B.O.
Phone 272-4777**