

The Pioneer Museum

(From pg. 4)

its bunk bed was supplemented by the attic, whose trap door the children reached by ladder. Wood fueled the stove, and oil the lamps. In this, as in other exhibit areas, there are many tools, farm implements and domestic utensils. Of special interest are the many homemade pieces of furniture, and wooden implements.

CN Coach- A model train display introduces the main railway exhibits. Part of the coach seating has been retained, and while most items

are "untouchable", weary travellers are invited to rest here. (This also serves as a miniature class room for school party visits.)

Telegraph operator's corner, ticket office, document display, insulator collection, uniforms, etc., lead the visitor back to additional pioneer exhibits, including a shoemaker's corner.

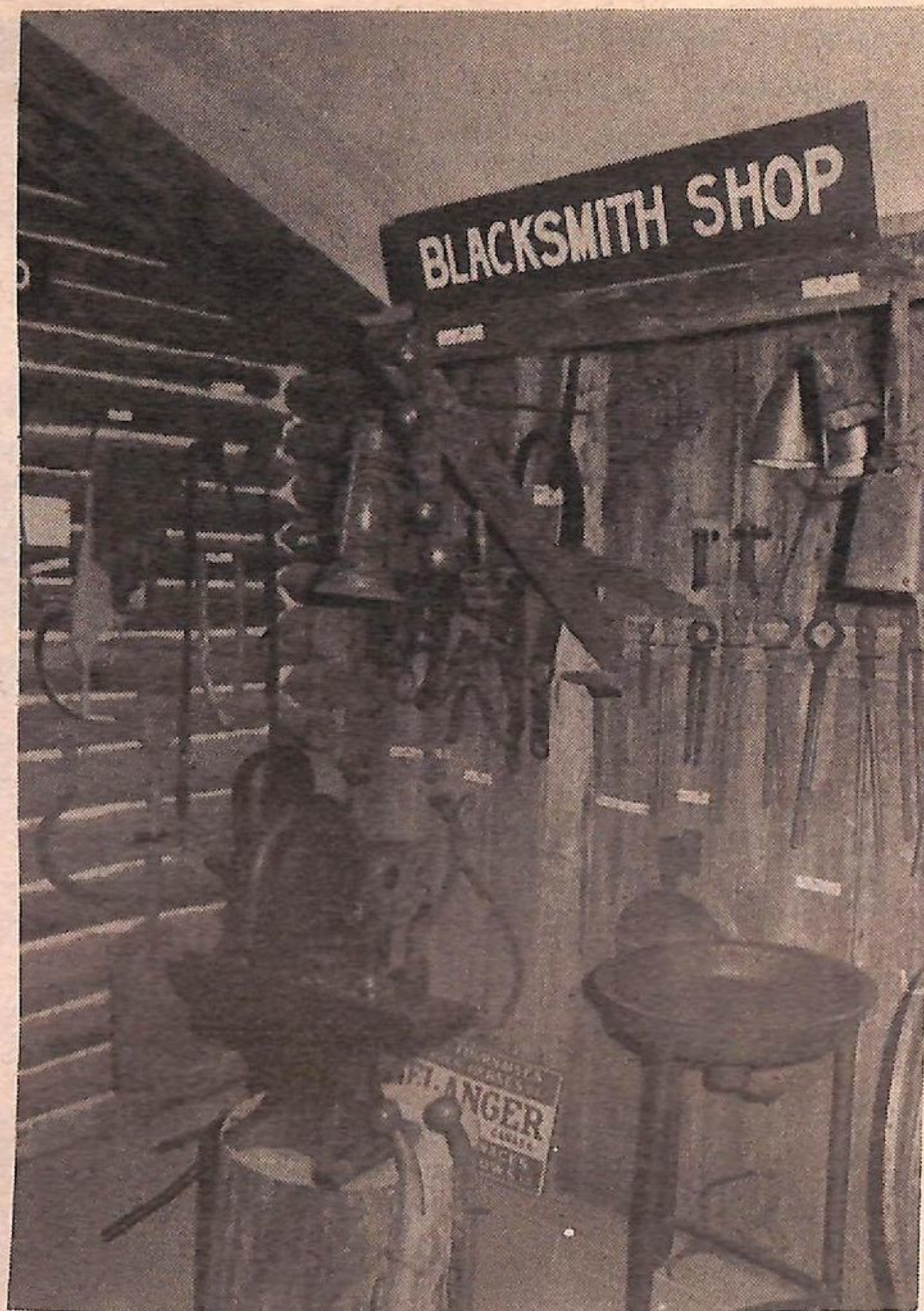
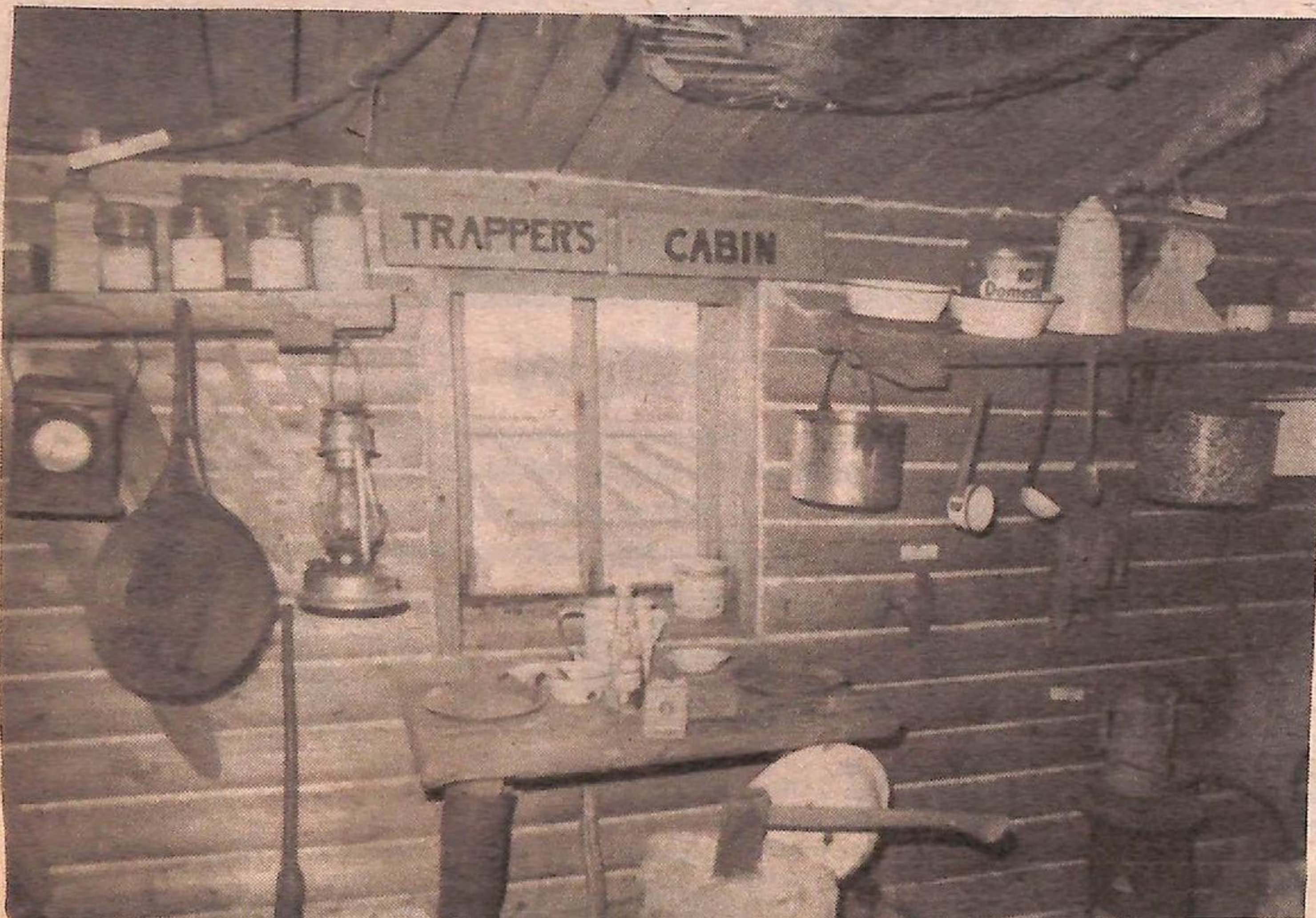
Photographs-The large and varied displays of photographs have been made available by

many owners. Many of the pictures are from the very large collection assembled by the Rev. W.L.L. Lawrence in the 1912 period, for which the museum is now trustee.

Location: ONR-CNR Station

Please do not touch exhibits. Old things are fragile.

Mrs. Juli Karam
Honorary, museum curator
Tel. (705) 272-4361, Cochrane, Ontario



FORESTS PART OF ALL OUR LIVES!

Welcome
To
Cochrane
"Home of the
Polar Bear Express
See us for Your
Sewing Needs
**SEWING
BASKET**
145, 6th Avenue, Cochrane
272-5730



M.L.J. LABELLE CO. LTD.
ROAD BUILDERS
ALL TYPES OF AGGREGATES
EQUIPMENT RENTALS
CONTRACT CRUSHING
FLOAT SERVICE

Contractors



Machine Rental
Crushed Gravel
Crushed Cement Gravel
Pit Run Gravel
Mortar Sand

Loader Rental
Screened Sand
Crushed Stone
Sand Fill

MLJ

Phone
272-4201




GRAVEL PITS THROUGHOUT THE COCHRANE DISTRICT

WELCOME VISITORS!
COME AND ENJOY A
FIRST CLASS MOVIE
IN THE AIR CONDITIONED

EMPIRE THEATRE

6th Avenue Ph: 272-4555