

The hardwood floors were of white oak, birch and maple, and free of knots. Every agent kept them clean and shining. The ceiling joists of oak were two by eight inches, and from 26 to 28 feet long, the floor 'joist' were two by ten inches and the same length.

A sturdy blue-green lantern glass, with "CPR" embossed on it was recovered, and one can visualize the station-master swinging such a lantern on a stormy blustery, winter' night. Two pages from a 1901 commercial catalogue were given to me by the men, knowing my interest in bygone years. The illustrations and prices are really something. For a mere 25 cents, you could get a "Handy Home Remedy Box", containing: (1)A metal vial of carbolated vaseline to be used for dressing wounds, bites, cuts, and barber's itch. (2)A vial of capsicum compound, superior to mustard or other plasters, for pain and colds in the chest and lungs, also it's a speedy cure for headache and toothaches. (3)A large cake of toilet soap, made in New York (4)A vial of white vaseline for the usual wounds and cuts, but, also very effective for rheumatism, diphtheria, ~~diphtheria~~, dysentery, croup, and sore throat. (5)A decorated tin box, holding cold cream, "once tried -- always used, for a skin of beauty is a jolly forever".

Many of you will remember the old CPR station in Douglas, the special excursions, which took cheering hockey fans to playoff games.

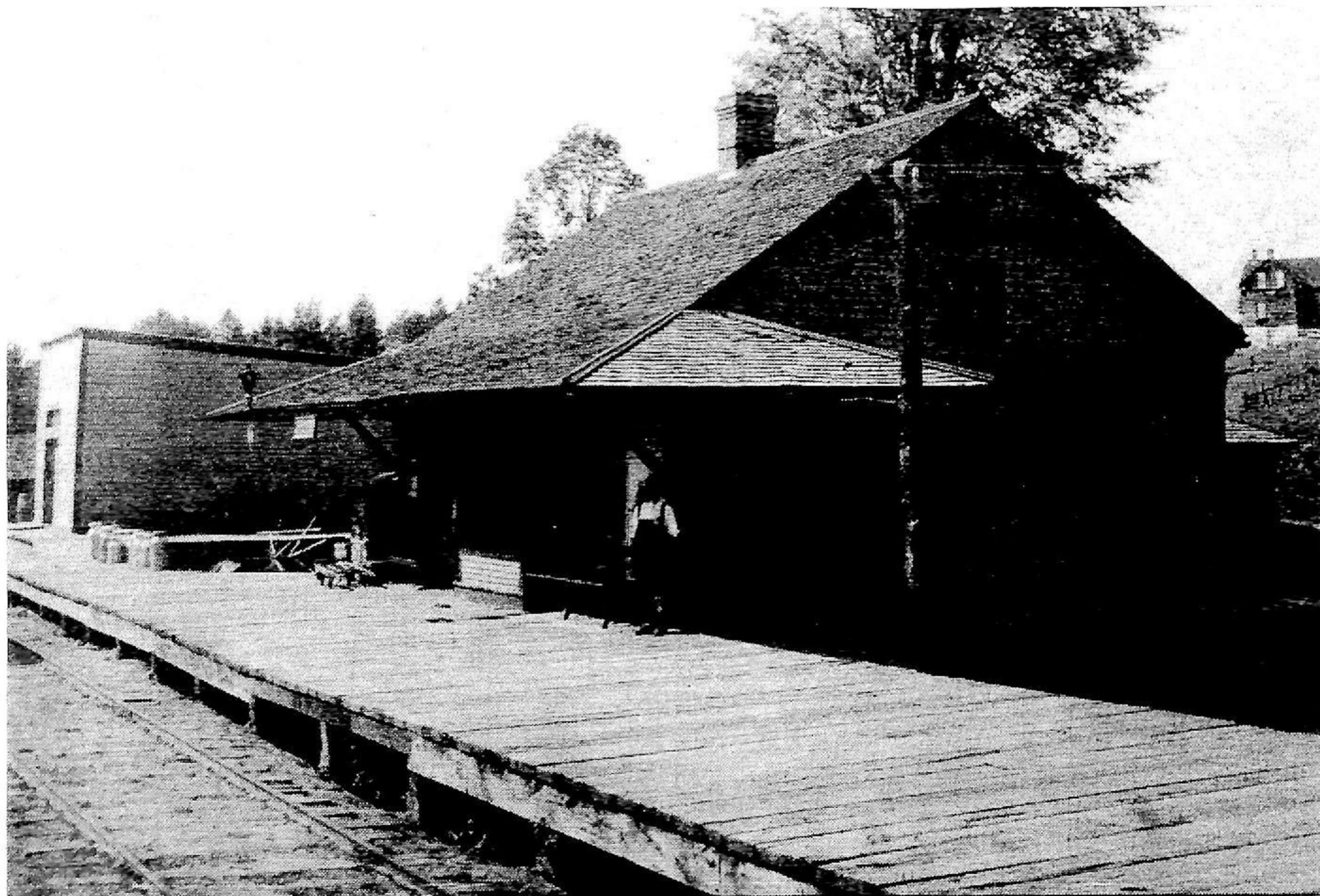
In 1928 Cobden and Douglas fought it out in Renfrew, and Douglas won. The next year a special train went to Pembroke and Douglas lost to Bromley 2-1. In 1937 Douglas and Eganville were battling for the Bonnechere Junior Championship. Good-natured yahooing people piled into the train at Eganville, more fans boarded at Douglas, and the train headed for Renfrew where the game was played. Douglas emerged victorious.

The last special train excursion for the play-offs, took us to Renfrew and the open rink. We tied with Bromley. Ah yes, I can still see the usual, one day, one coach passenger train, with the caboose in back. It provided a leisurely trip to either Renfrew or Eganville.

What a big thrill it was for children to board the train for a quarter, spend the whole day in Renfrew, sightseeing, window shopping, having a banana split at Haramis Restaurant.

I wish kids of today could know the joy of a ride in a smoke-belching, steamdriven, whistle-tooting old time train.

So long old CPR station -- of so many years, you served us well!



*From the archives*

This photo of the Canadian Pacific Railway Station at Douglas was taken in September, 1914. The photographer is unknown. The picture is from CP Rail's Corporate Archives.