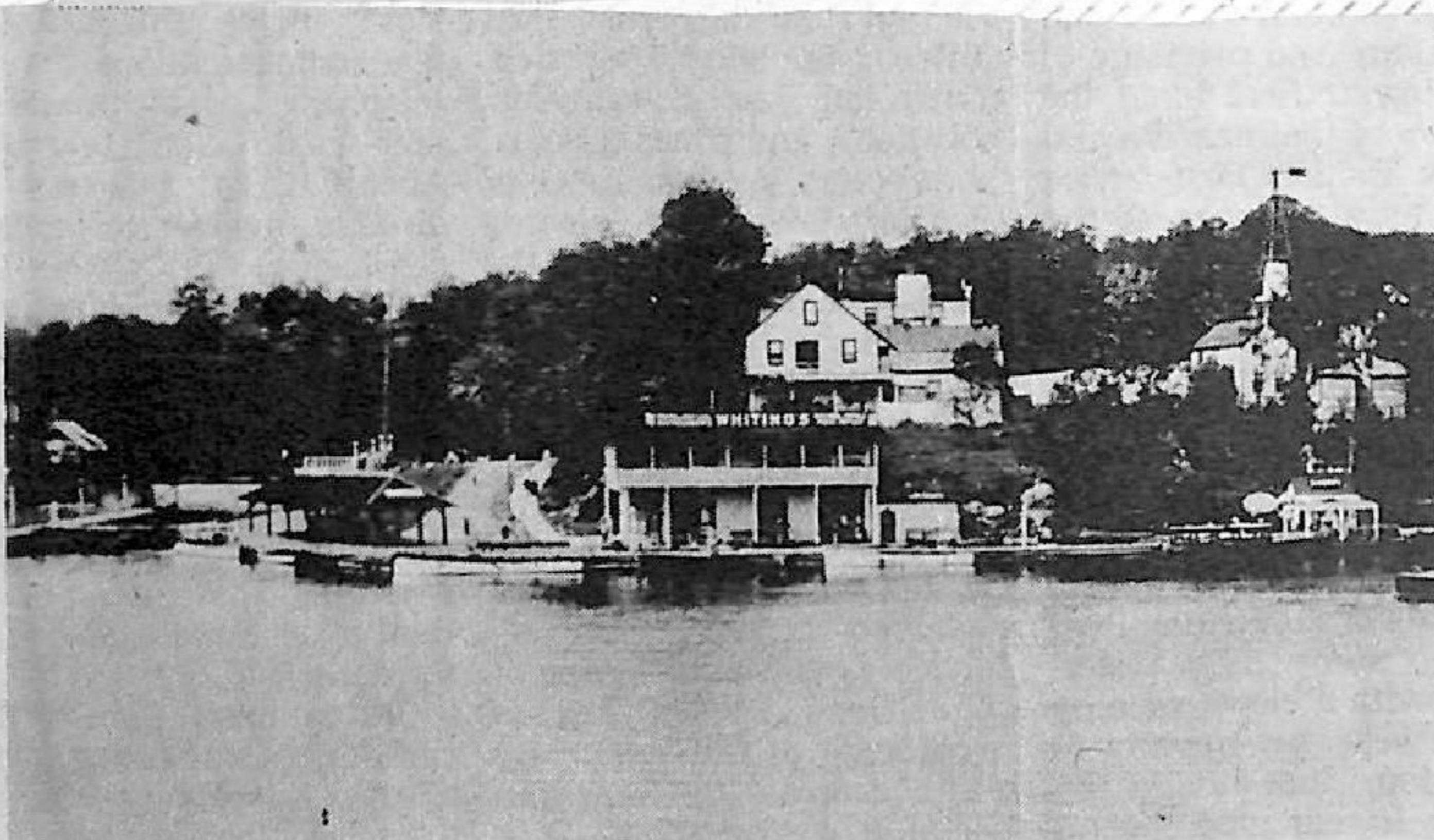


**DITCHBURN'S AT PORT CARLING:** The Ditchburn family first located at Rosseau and after a few years began building boats, this activity being considerably expanded in the next generation, with plants at a few places around the lakes, especially Port Carling and Gravenhurst. In Port Carling the Ditchburn plant, before 1900, was located on the wharf above the lock, as shown in this picture. Later when the locks were rebuilt in the early 1920's the buildings were moved across the channel and one was later acquired by the Temple Bros. for canoe and boat rentals—and the Temple's also operated a picture show in the days of the silent movies. The steamer in the above picture was the Medora



**PORT CARLING WATERFRONT:** This view of Port Carling, taken perhaps about 40 years ago, shows the lock and the docking on the Lake Rosseau side, with Whiting's drug store and one of the small dockside shops.