

ST. JOHN'S PRESBYTERIAN CHURCH, PORT PERRY

The picture of St. John's Presbyterian Church, about 1904.

On the reverse side is a picture of the United Church, in 1904, the Methodist Church.

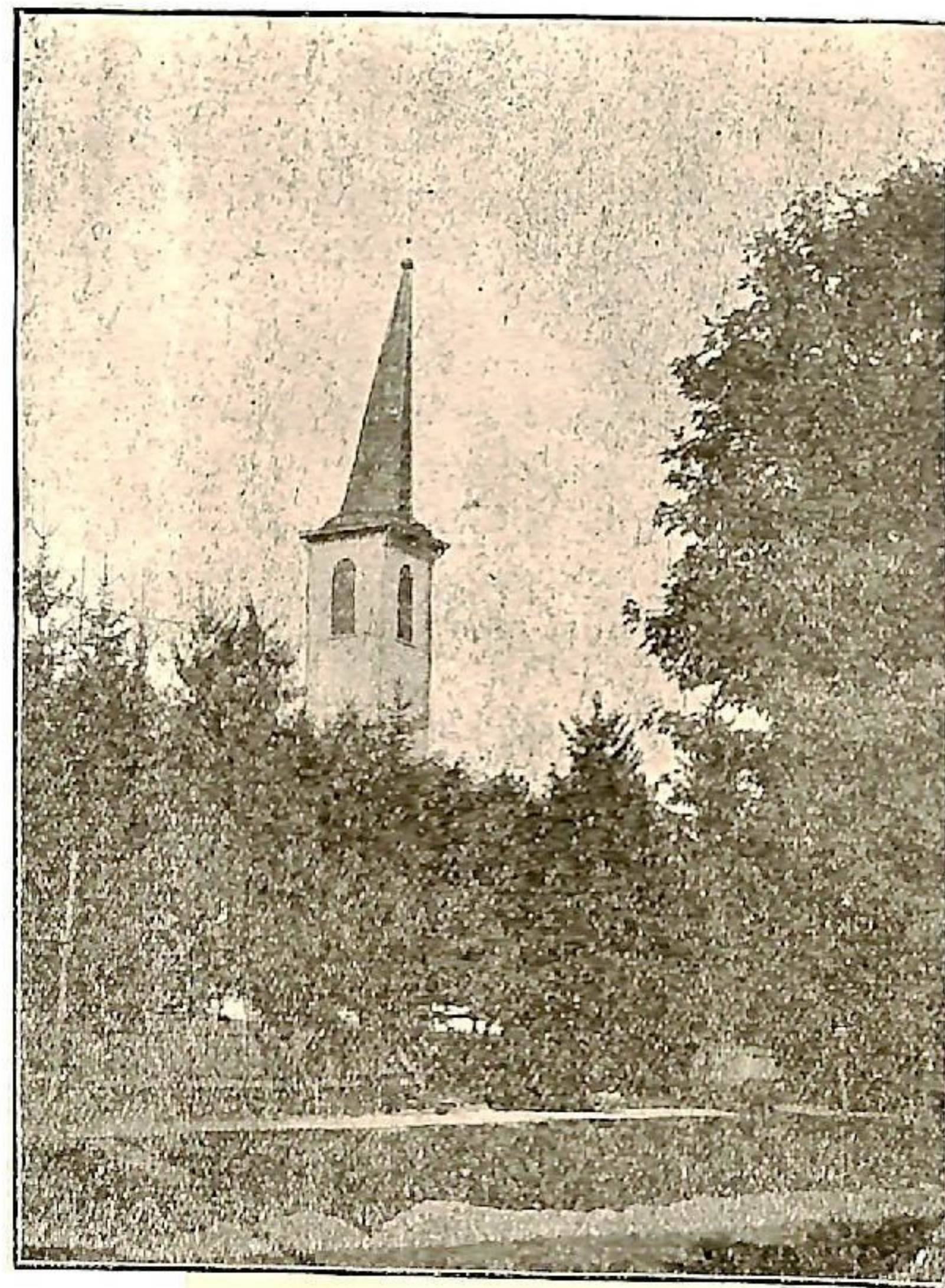


PRESBY. CH.

The picture shows the tower of the Baptist Church, about 1904.

This church was not used for a number of years, then it became the Gymnasium and Household Science rooms of the High School. After the school burned in 1926 it was again unoccupied. After a time it was sold to the Port Perry, Reach and Scugog Agricultural Society, the tower was taken down and it was moved to the fairgrounds where it serves as the Women's building.

A new church has been built on the property. *next page*



BAPTIST CHURCH, PORT PERRY