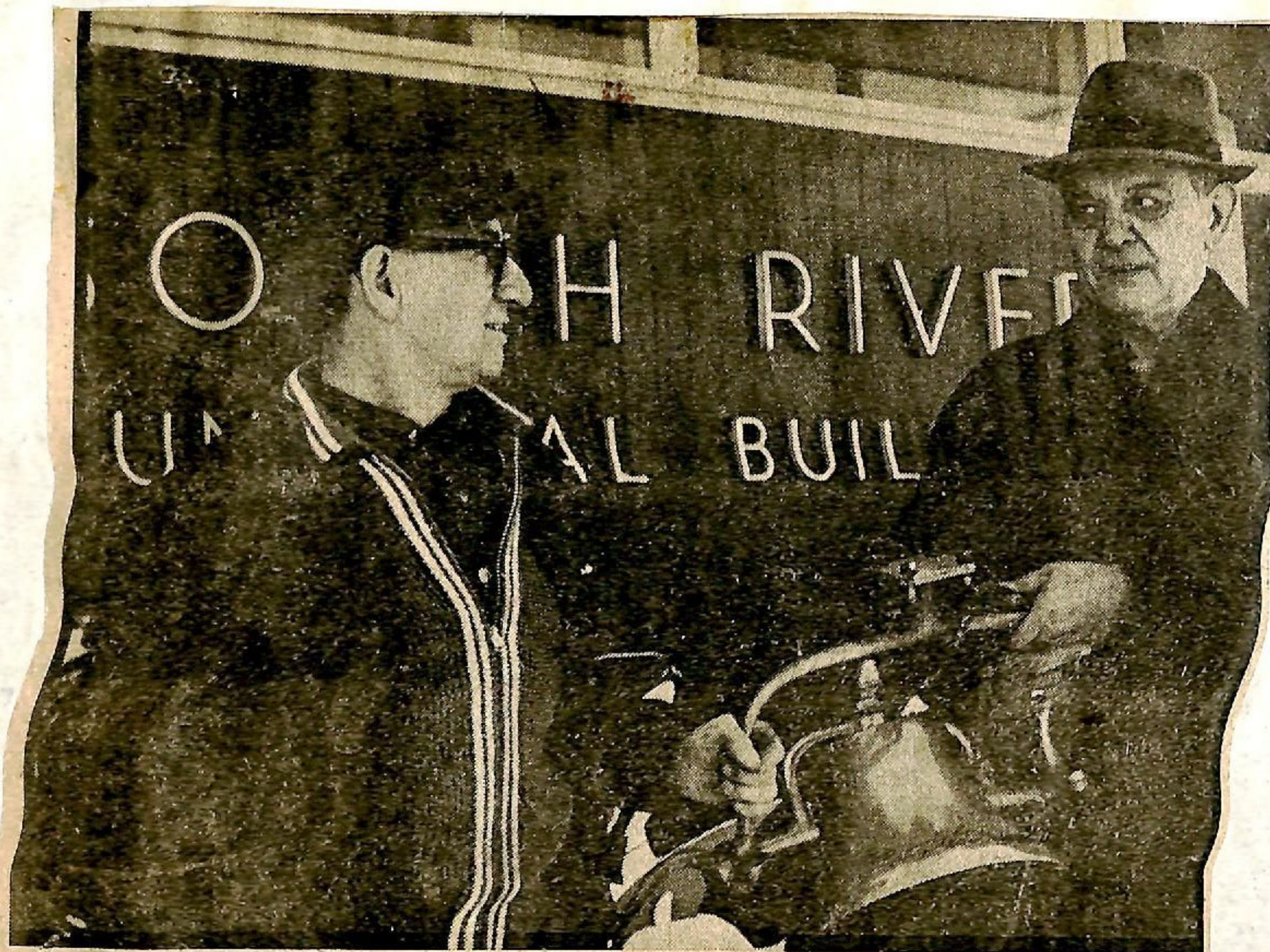


PIONEER MUSEUM: Shown here is the Perry Old Timers Pioneer Museum which was formally opened on Saturday, November 30. The building measures 25 feet by 20 feet and is 15 feet high (from the floor to the peak of the roof.) The building is constructed of the original material except for the roof. The Pioneer Museum was a New Horizons Project taken on by the Perry Old Timers under the direction of Mr. Gordon Mason. Almaguin Staff Photo.



BELL PRESENTED — Reeve George Fitzsimmons is shown presenting old fire bell to W. G. (Duke) Hammond. Duke Hammond is starting a museum in the old Birchdale school house at Emsdale. The old fire bell which was used in the 1920's will be one of the many interesting items to be displayed at the museum. Among other things of interest will be pieces of logging equipment. (Photo by Loyd Gough)