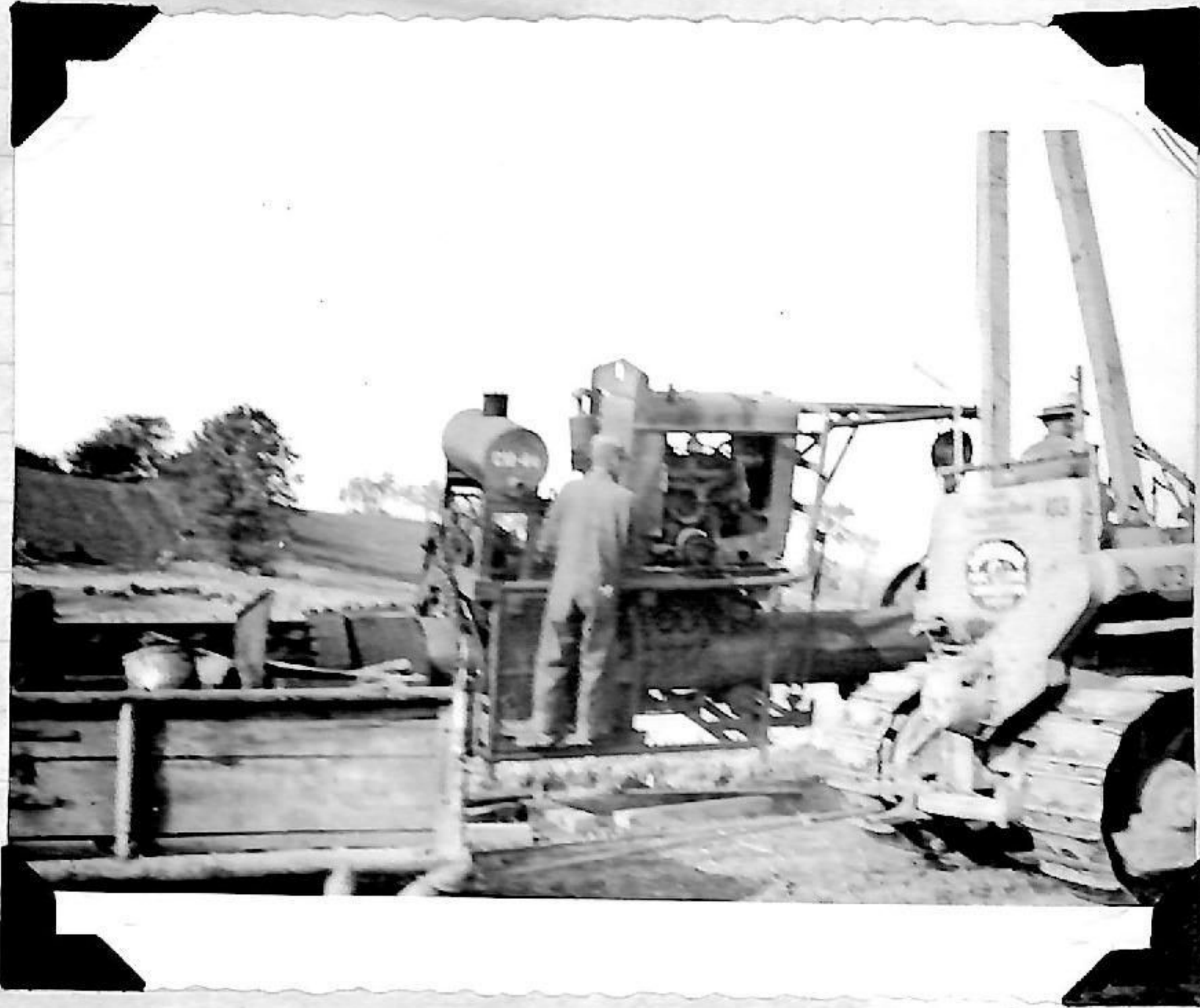


XIII

A close-up view of the Buffing Machine, the steel brushes for rust removal can be seen to the right of the man standing on the machine, and the tar brushing equipment to his left. Note the difference in the pipe shown between bulldozer and Buffing machine, and that directly behind the Buffing machine to the left of the picture after it has been coated with tar.



XIV

The final welding job joining together the short section of pipe used to cross the Brighton to Hooper County road to those sections already joined to go across country. The bulldozer on the left, picked up and held the short section of pipe aloft, and steady, to enable the welders to join the two sections of pipe.

