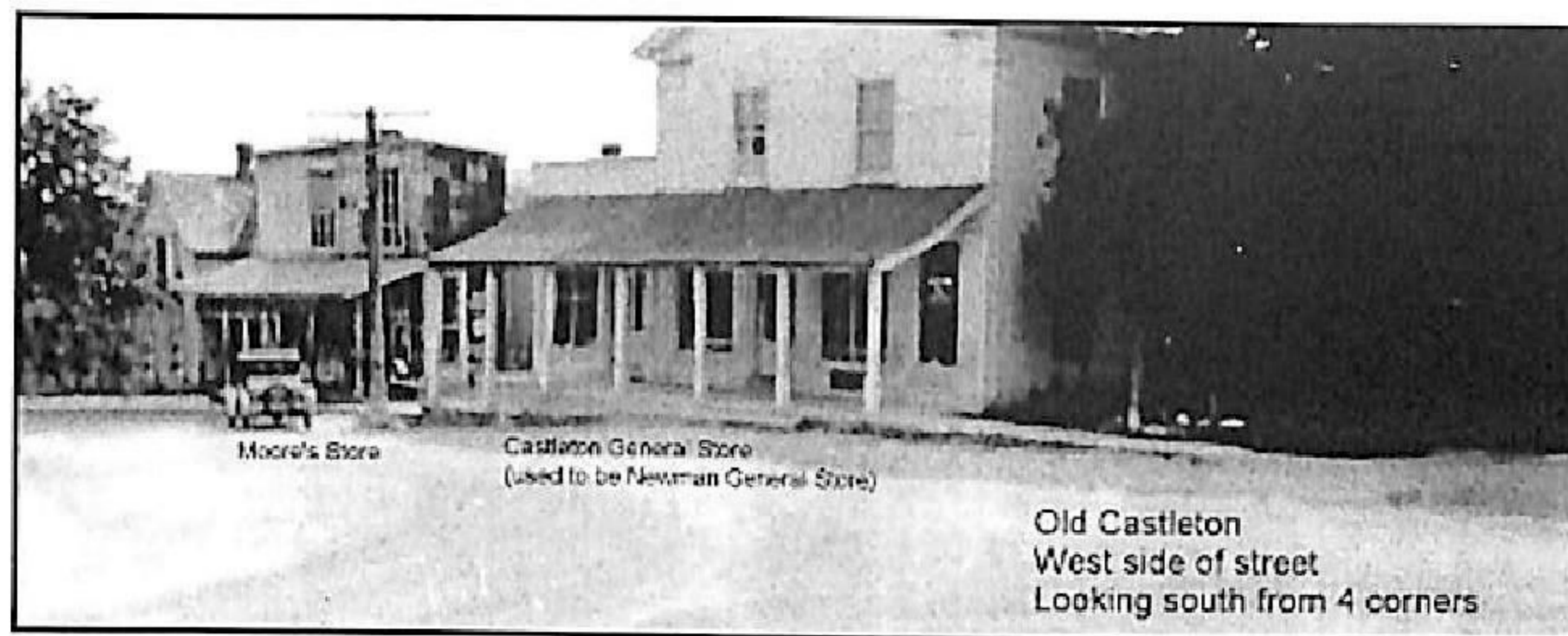
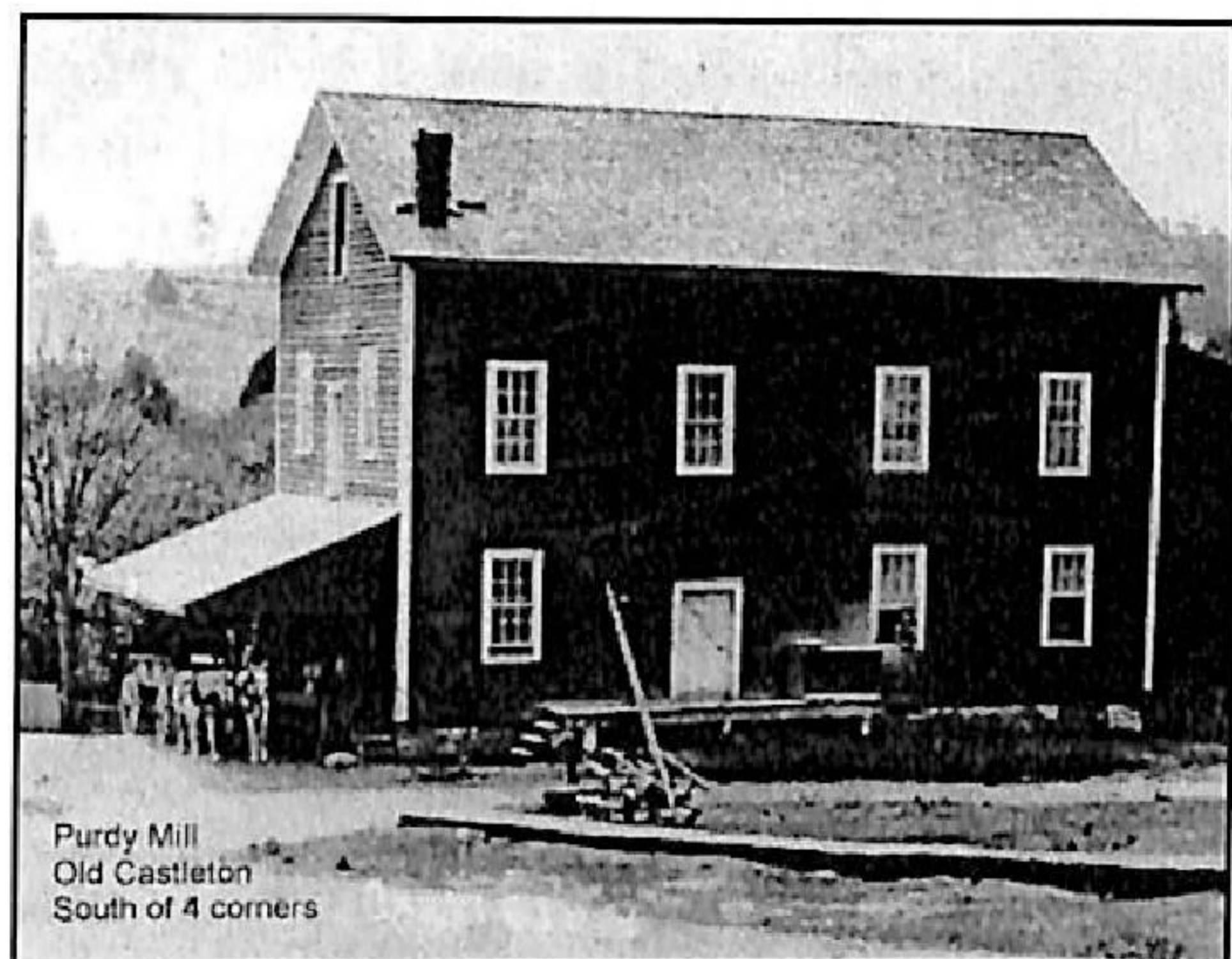


post office operated out of the building at one time or another. Lawrence Naish had an egg grading station there too.



Across the street, where Warren and Carol Brown have their garage, right beside Newman's (Castleton General Store), Fred Moore had a general store and butcher shop. There were no businesses from there south to the Purdy Mill, which, at one time, was powered by water. Before Elwood's time it was a flour mill. While he worked there during the war years it was used to grind grain to feed livestock. Seed was cleaned there as well, in preparation for planting.



Blessed with a remarkable memory, Elwood can recount all sorts of info about the machinery which ran the mill. The motor was a Rushton Hornsby diesel single cylinder model with a 10 inch piston and a 24 inch stroke. You could fuel it with just about anything but gas – peanut oil, corn oil, furnace oil... The flywheel in the mill weighed five tons and ran at 350 RPM. It made a pinging sound you could hear all over the hamlet.

Up the street where the spruce tree sits on the town hall lawn was Tait's General Store. Elwood remembers they didn't sell meat. Since Newman's