



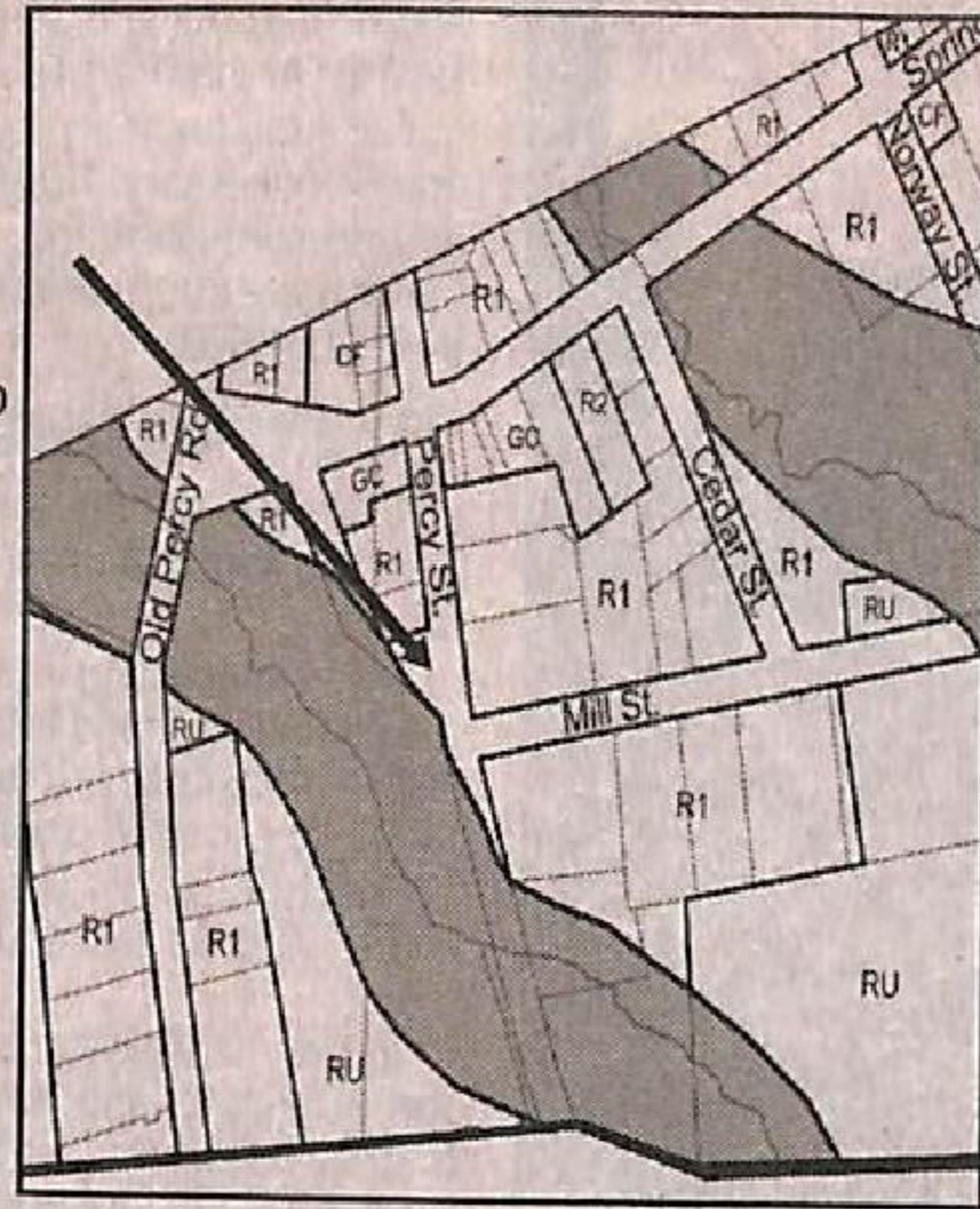
The parcel affected by this application is approximately 80 meters (242 feet) in length with a width of 22 meters (67 feet). A map of the area is shown below. An application has been received from adjacent property owners to purchase the affected lands.

Any person may attend the public meeting and/or make written or verbal representation in person, or counsel, solicitor or agent, who claims, will prejudicially affect their land by the proposed by-law.

ADDITIONAL INFORMATION relating to the proposed road allowance closure is available for inspection in the Township of Cramahe Municipal Office, at 1 Toronto Street, Colborne during regular hours.

DATED AT THE TOWNSHIP OF CRAMAHE THIS 5th DAY OF January, 2011.

Christie Alexander, CMO
CAO/Clerk
Township of Cramahe
P.O. Box 357
Colborne, ON K0K 1S0
905-355-2821 Ext.224



If a person or public body does not make oral submissions at a public meeting or make written submissions to the Township of Cramahe before the by-law is passed, the person or public body is not entitled to appeal the decision of the Council of the Township of Cramahe to the Ontario Municipal Board.

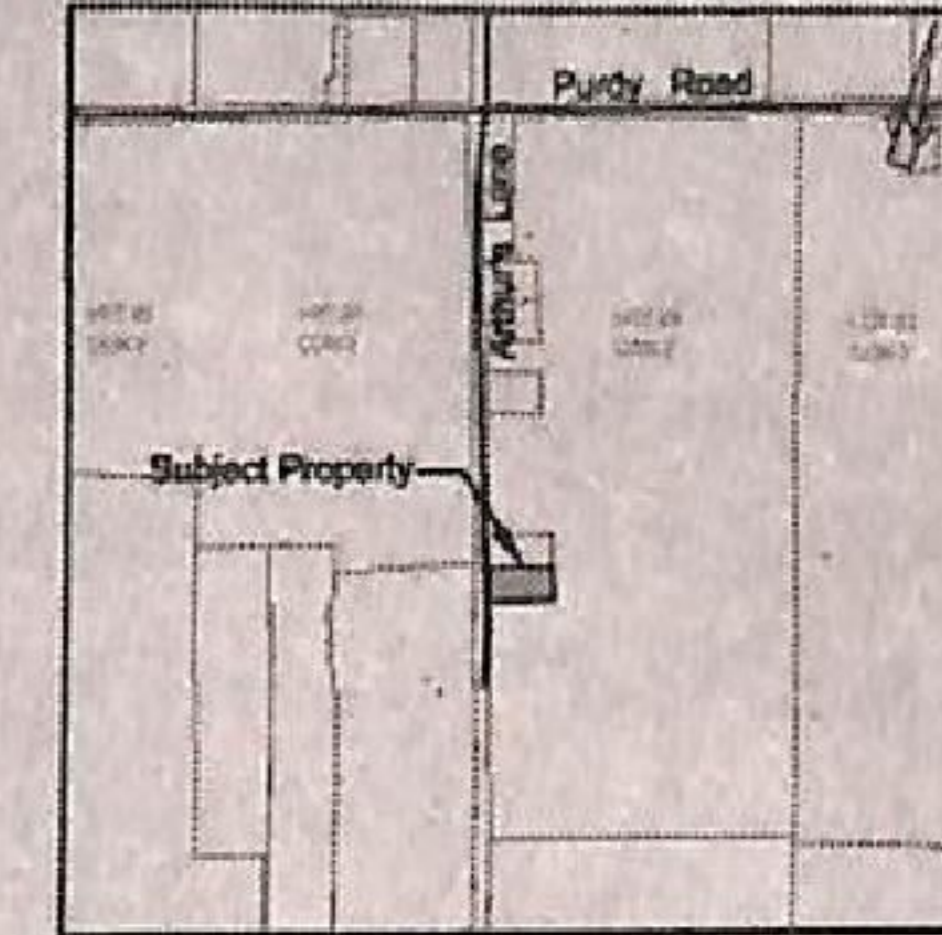
If a person or public body does not make oral submissions at a public meeting, or make written submissions to the Township of Cramahe before the by-law is passed, the person or public body may not be added as a party to the hearing of an appeal before the Ontario Municipal Board unless, in the opinion of the Board, there are reasonable grounds to do so.

Information

Additional information relating to the proposed Zoning By-law Amendment is available for inspection at the Township of Cramahe municipal office at 1 Toronto Street in Colborne during regular office hours.

Dated at the Township of Cramahe this 11th day of February, 2011.

Christie Alexander, CMO, CMMIII
Chief Administrative Officer/Clerk
Township of Cramahe
1 Toronto Street
P.O. Box 357
Colborne, Ontario K0K 1S0
Tel 905-355-2821
Fax 905-355-3430



1 Toronto Street, PO Box 357, Colborne, ON | 905.355.2821 | Fax 905.355.3430
www.visitcramahe.ca