

from Purdy Road is down the driveway at the former Little Lake Pavilion (once among the most popular restaurants around, complete with line-ups for special occasions like Mother's Day).

You'll hit a stretch of construction after that, with chocolate-brown cows on the north side of the road observing the hubbub with disinterest. Meanwhile, keep your own eyes peeled for the right turn at Fiddick Road.

This interesting road has sharp right angles that jut out and then back, as if the road is tracing its way around a box. At the third right angle, look out on your left for a wonderful old red barn with a half-dozen white rabbits in all sizes on its side. The red paint behind the rabbits is faded, as if the owner is understandably intimidated by the prospect of painting around those bunnies.

Just as the fourth right angle straightens and heads south, look ahead and get a breath-taking view of miles and miles of Rice Lake.

That road ends not far south of here at the County Road 2 stop sign. Turn left and head toward Brighton, but not before passing Cricklewood Farms on your right. Each year they have a fun-but-educational corn maze and costumed mannequins in a theme (pirates, Medieval times and so on). Judging from the costumes the mannequins are wearing, with masks and air tanks and fish nets and lab coats, this year is a marine-biology theme.

You won't go all the way into downtown Brighton. Instead, look out on your right for Ontario Street, the Presqu'ile Park turn-off. We've already done a Presqu'ile Park Daytripper, however, so we're excising that part of this tour (though you may certainly exercise your right not to).

Instead of following the rightward curve to the park, go straight, then through the stop sign, and follow Prince Edward Drive along the lakeshore (maybe stopping for a moment at Harbour Street Parkette with its benches, picnic tables and big shady trees on the Lake Ontario shore). This road's new houses and apartments shows the area's growth, but there are still plenty of the small cabins and log houses that have been around much longer.

Take the first right at the first stop sign you come to (after an especially steep downhill) to go north on County Road 26. You'll go over Highway 401 and then, just up the hill, find the driveway entrance on your right to the Brighton Provincial Wildlife Area. Then, about a mile farther on your left, there's the Brighton Landfill.

North into farmlands you go, with the county road ending at a stop sign at County Road 41. Go north, to where the road becomes Grosjean Road, then take that left at Old Wooler Road. This is a narrow, pretty road that takes you past two cemeteries on your left.

McPhail's Cemetery is first, a large sunny plot marked with a centennial cairn whose stone says McPhail's Cemetery, 1832-1967. Continue westward, past farms and a Domtar Managed Forest on your left (and a stretch on your right with new homes and a long line of beautiful willows) to Codrington Roman Catholic Cemetery - smaller than McPhail's and without the cairn.

You won't see many rural businesses with a more fetching name than the Honey For You sign on your left. Soon after that, you're at the stop sign at County Road 30. Turn right and go a few feet to the Codrington Community Center, where you take a right at County Road 27. You'll pass the community fire hall on your right and the road leading to the fish hatchery on your left.

Just after you pass the Cramahe Township sign, look westward for another breath-taking view - this one of the Northumberland hills.

Soon after that, you'll pass some of the landmarks of Morganston, like the stark white-frame Congregational Church on your right and (within view of where the stop sign is posted at County Road 25) the grand, beloved Morganston United Church that is now a home.

Turn left at that stop sign to travel through beautiful rural Cramahe Township, where sheep now graze at the former Pine Ridge Alpaca farm on your right, and Kokimo Candleland stands on your left as a success story of the innovative CDCI West student who started

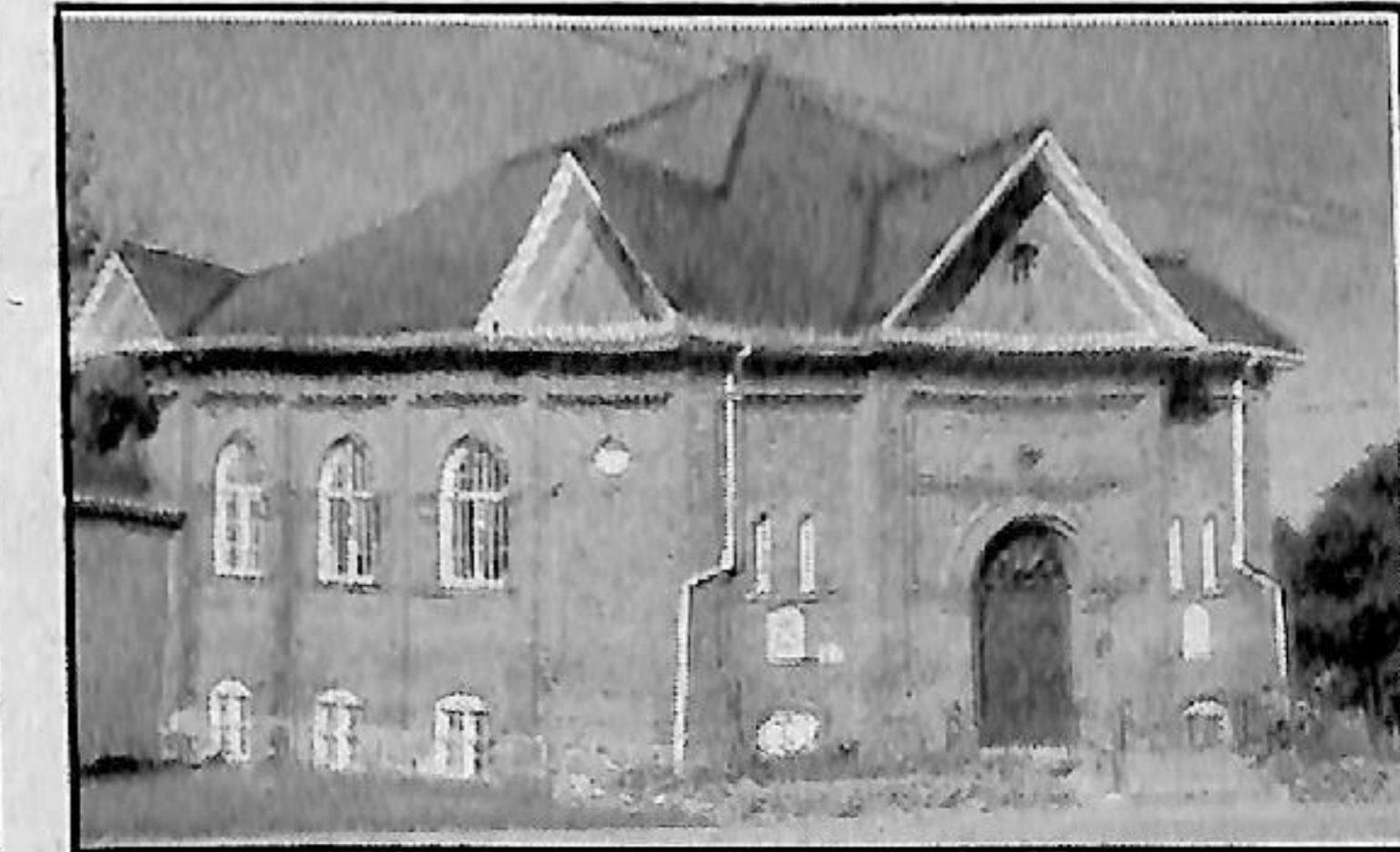


McPhail Cemetery, near Codrington, has this centennial cairn with the dates 1832-1967.

COBSURE DAILY STAR

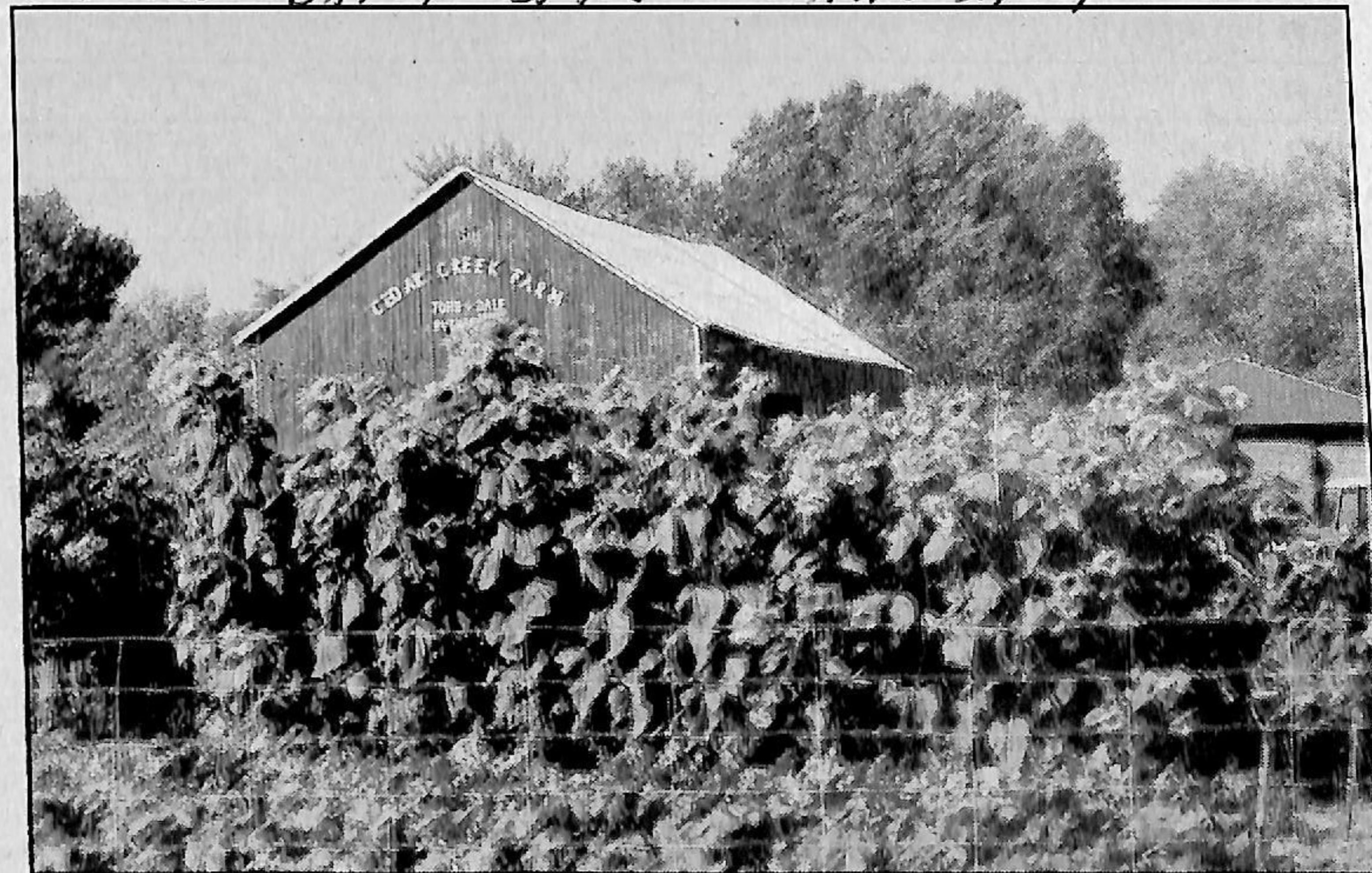


With the swim goggles, oxygen tank and white lab coat on these figures, Cricklewood Farms appears to have a marine-biology thing going.



The former Cramahe Township hall in Castleton is undergoing a grassroots-driven restoration campaign.

AUG 31 07



A big cheerful field of sunflowers stands at the Rutherfords' Cedar Creek Farm just south of Castleton.