

PHOTOS AND STORY  
by Cecilia Nasmith

COBURG DAILY STAR

NOV. 24, 2006

Starting the tour at the eastern end, take County Road 2 to the Cramahe-Brighton Boundary Road. There up on the hill sit the former SS #2 and SS #3 Union School, which went on to be another kind of educational establishment during the years it hosted the Brighton Centre for Individual Studies. It's an interesting combination of the typical old-fashioned one-room schoolhouse with a modern brick addition at its back.

Travel west on County Road 2 into Salem, where #13922 is actually an 1836 church that fell into disuse and was purchased by the school board in 1887. It closed in 1961, its students absorbed when South Cramahe Public School opened along with pupils from several other schools.

Just a little west of here, take Little Lake Road to the north and then, at the stop sign, you can look across and see South Cramahe Public School.

Turn left here, on to Purdy Road, and look out for #246. This neat little white-frame house is the former SS #10 Purdy's School, also known as Pine Grove School. It opened in 1877 on a half-acre lot purchased from Thomas and Eliza Greer for \$50, and it cost \$500 to build. The school closed in 1961.

Continue west to the stop sign, which puts you at County Road 25. Turn right, then look out on your right for Telephone Road (where you'll turn right again). In a few miles, you'll be in Edville and can look out for #14281, SS #9 Edville School (also known as Sharon School or Little Lake School). This school was built in 1871 and, at times, was used as a place of religious worship as well. It was built on land donated by William Ives and closed in 1961. It is still an attractive building with what looks to be a well preserved bell tower.

Then, at the stop sign, turn right on to County Road 21.

At #13979 you'll find cream-coloured SS #13 Dundonald School. It was decided to build this school in 1874 on land that had been owned by Austin and Nancy Dudley. The frame structure was deemed to be of poor quality, and it was replaced by the present building in 1897. It closed in 1961.

Travelling farther west, you'll come to #13170, formerly SS #20 Rutherford's School. This school opened in 1875 on a half-acre lot purchased from Emma Richardson, and closed in 1961. It's now a pleasant little frame home.

Continue to the stop sign, and you'll be back at County Road 25. Turn right, continue past the stop sign in Castleton, and take a right at Mt. Pleasant Road to see SS #17 Mt. Pleasant at #1025. The stucco exterior is flaking in places, allowing a glimpse of brick underneath.

Mrs. Argyris tells us that one of this school's graduates, Clarence McKague, was famed for his ability to stitch up a softball or glove most capably. He would go on to teach at SS #24 Red Cloud School — replacing, it is said, a teacher who ended up in a mental institution. His wife Helen taught at SS #10 Purdy's School.

Keep north on Mt. Pleasant Road and bear right where it forks. The road has now become Morganston Road, and you'll continue east to the stop sign. Continue east here, and it has become County Road 27. Look out for #399, which is SS #16 Morganston School. The first school in Morganston was built in 1850, but this one was built in 1883 by David Turney for \$900. The bell was added in 1887, but it is no longer apparent on the tin roof.

Retrace your way back to the stop sign, and turn left on to County Road 25. Then take the second left-hand turn at Tobacco Road. Bear south at the jog in the road, and look out for a crossroads that is unmarked.

Mrs. James Webb for \$160. It had two notable touches: its white-painted tin ceiling and its basement furnace (as opposed to the usual box stove in the middle of the classroom area). The gray bricks were covered with red ones in 1910. When the student body became too numerous, some of the pupils were sent around the corner to the Spencer House at 2202 Spring Street. After the school closed, the building served for a time as headquarters of the Castleton Orange Lodge before becoming a residence.

At the end of Norway Street is Pine Street. Turn left there, then take a left back on to County Road 25. You'll go south past the stop sign and out of Castleton, but make one more stop along the way.

Take a right at Pipeline Road and look out for #106. SS #14 Black's School opened in 1892, though the land had been purchased in 1876. It closed in 1965, and is now a residence — one where some major renovations are obviously going on right now.

To go home, just continue west on this road. Just after the Alnwick-Haldimand Township border, it becomes beautiful Shelter Valley Road. This will give you a lovely drive to end the Daytripper with, and then put you back on County Road 2.

Mrs. Argyris even offers a post-script — for those of you who have been keeping track of the numbers, she has even worked at filling in the gaps.

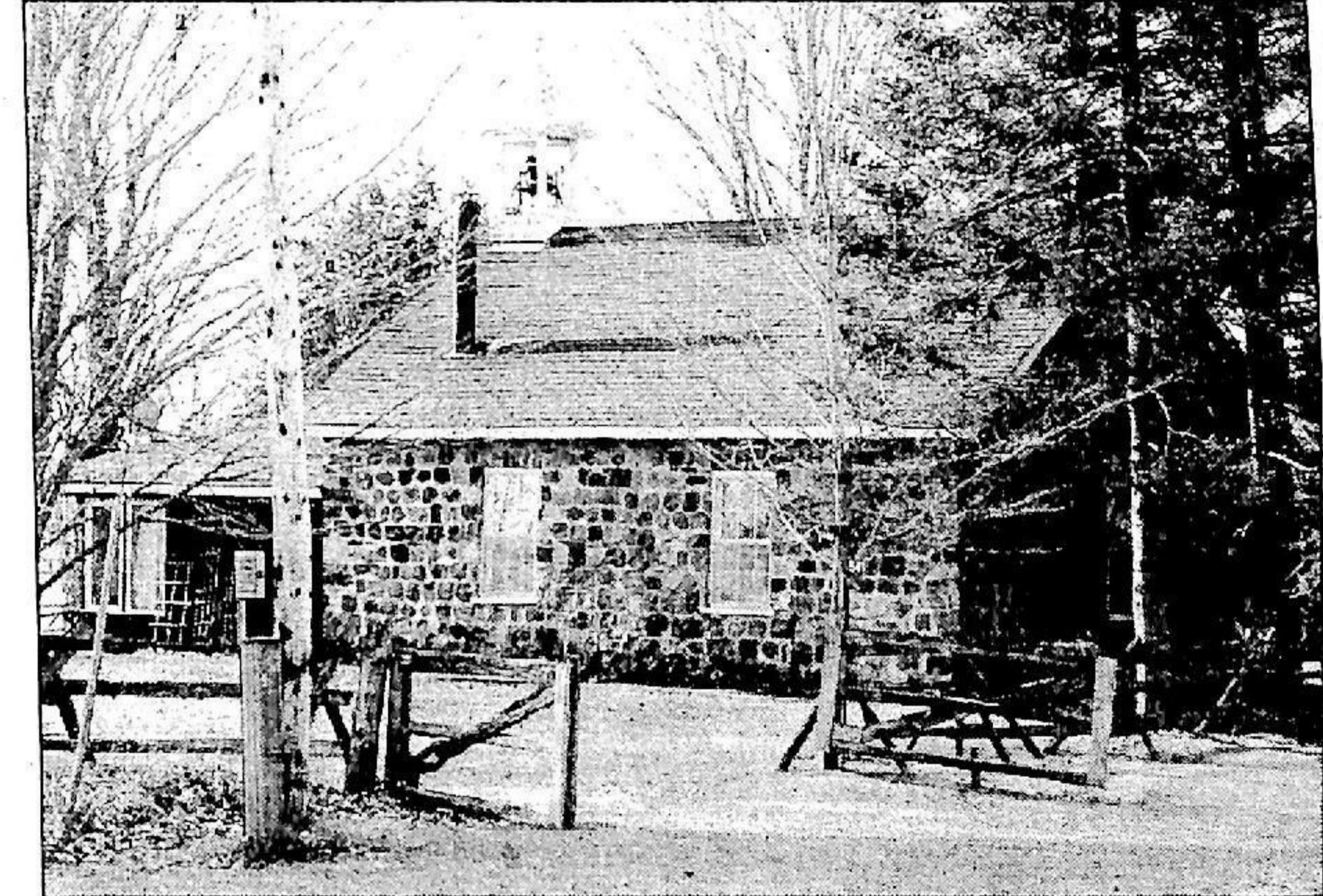
SS #1, 5, 6, 7, 8, 11, 12, 15, 19 and 25 never had schools built, she said, presumably because the population didn't warrant it.

Of SS #18 Pine Grove School, only the foundation remains at the corner of Pine Grove and Tobacco Roads.

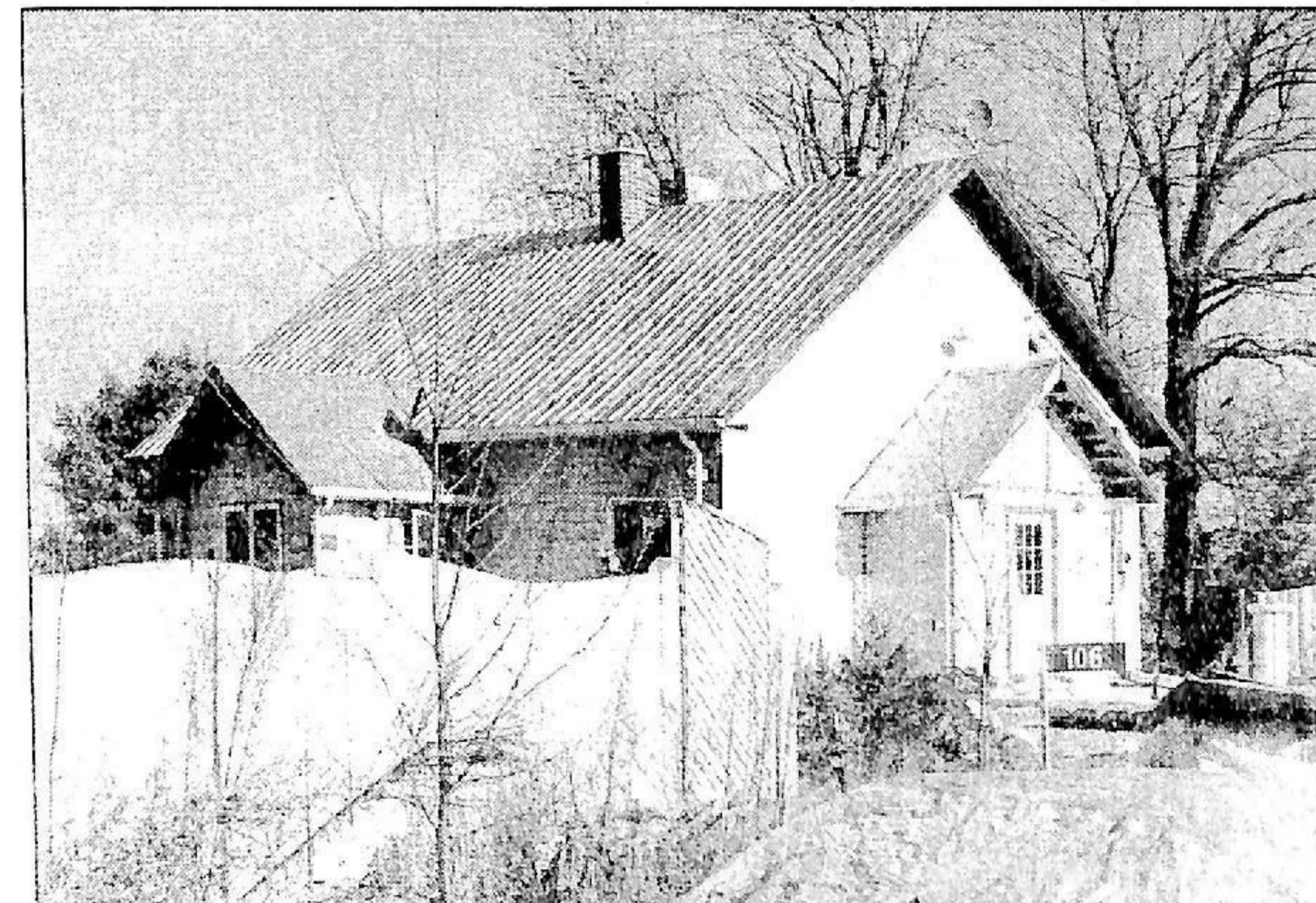
SS #23 Bush's School burned down. It was located at an unnumbered spot at Jones and Barlow Roads. This is also the fate that befell SS #24 Red Cloud School. Only the foundation remains on Red Cloud Road.



Still recognizable as a former school, this Morganston structure was built in 1883 for \$900.



The three-foot-thick walls in this Shiloh school once muffled all evidence of Hurricane Hazel to those inside.



There are obviously big renovation plans slated for the former SS #14 Black's School.