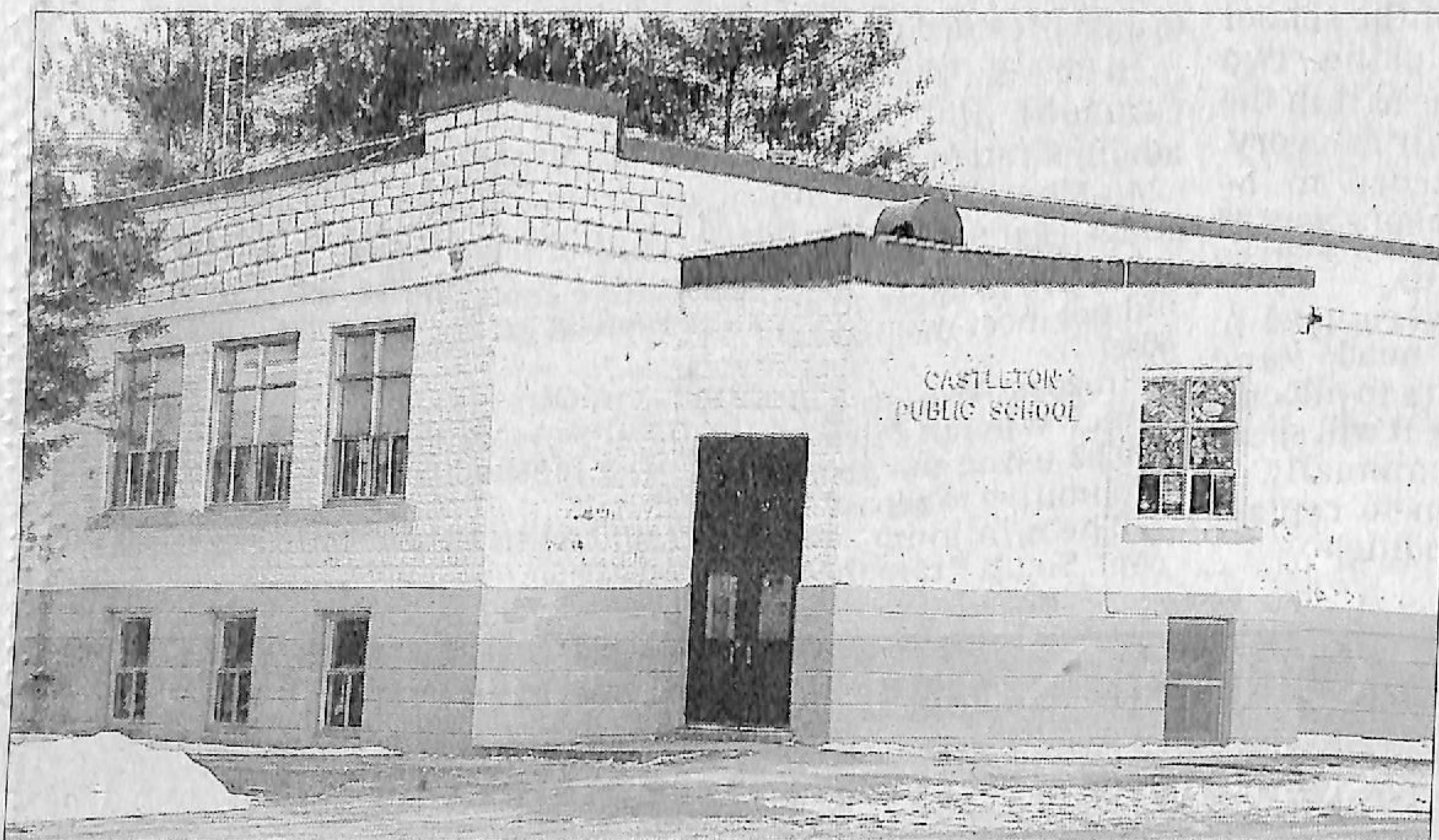


# Death knell for two Cramahe Twp. schools



### Castleton Public School

Built in 1929. 2006/07 enrollment: 120 students.

Deemed prohibitive to repair.

Students will move to Spring Valley Public School, Brighton, and Percy Centennial, Warkworth.

**Recommended closing date: 2009.**

By Bob Owen  
lowen@xplornet.com

Declining school enrollment is sounding the death knell for two Cramahe Township public elementary schools.

Castleton and South Cramahe Public Schools are up for closure.

If the proposal goes forward, the children will be bused to Brighton, Spring Valley, and Warkworth by 2010.

The consolidation would leave

Cramahe with one elementary school in Colborne. The town of Brighton would house an elementary school with a population of between 550 and 600 students — and the Best Starts daycare program for this area. Cramahe will remain without a single publicly supported registered daycare space.

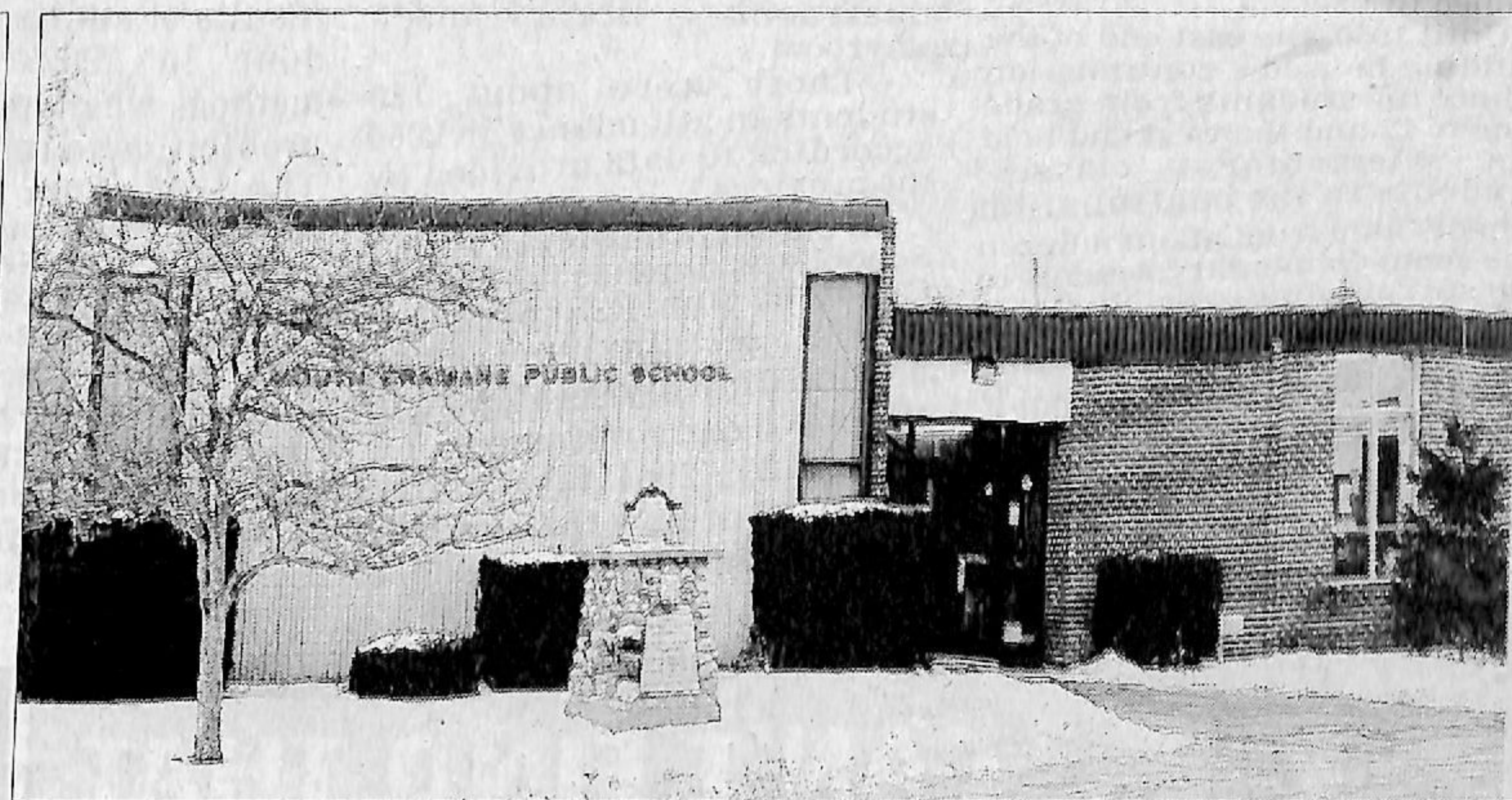
The Kawartha Pine Ridge (KPR) District School Board called a public

meeting for Wednesday, January 31, 6:30 p.m. at CDCI East secondary school in Cobourg to outline the proposals affecting Northumberland County. The board's 10-year Capital Plan includes building new schools, closing old ones and consolidating others.

The KPR public school board serves over 37,000 students and covers nearly

7,000 square kilometres from Lake Ontario in the south to to Apsley in the Kawarthas to the north. The Northumberland County school enrollment meeting was the last of four held by the KPR board across its jurisdiction. Trent Hills was included with meetings to the north, but no changes to existing schools are planned in the Trent Hills area under the 10-Year capital Plan.

For other county Northumberland County public school changes, see page 2



### South Cramahe Public School

Built in 1961. 2006/07 enrollment: 200 students

Deemed prohibitive to repair .

Students will move to a new Brighton Public School (the present school, with enrollment of 355 students, being too prohibitive to repair) planned by 2010.

**Recommended closing date: 2009**

See School closures, Page 2