

# The Big Apple hits the 2,000,000 pie mark

COLBORNE CHRONICLE OCT. 7/09

## Major changes

The Big Apple has undergone constant change since it opened. Most of what is seen today by visitors was not part of the original set up.

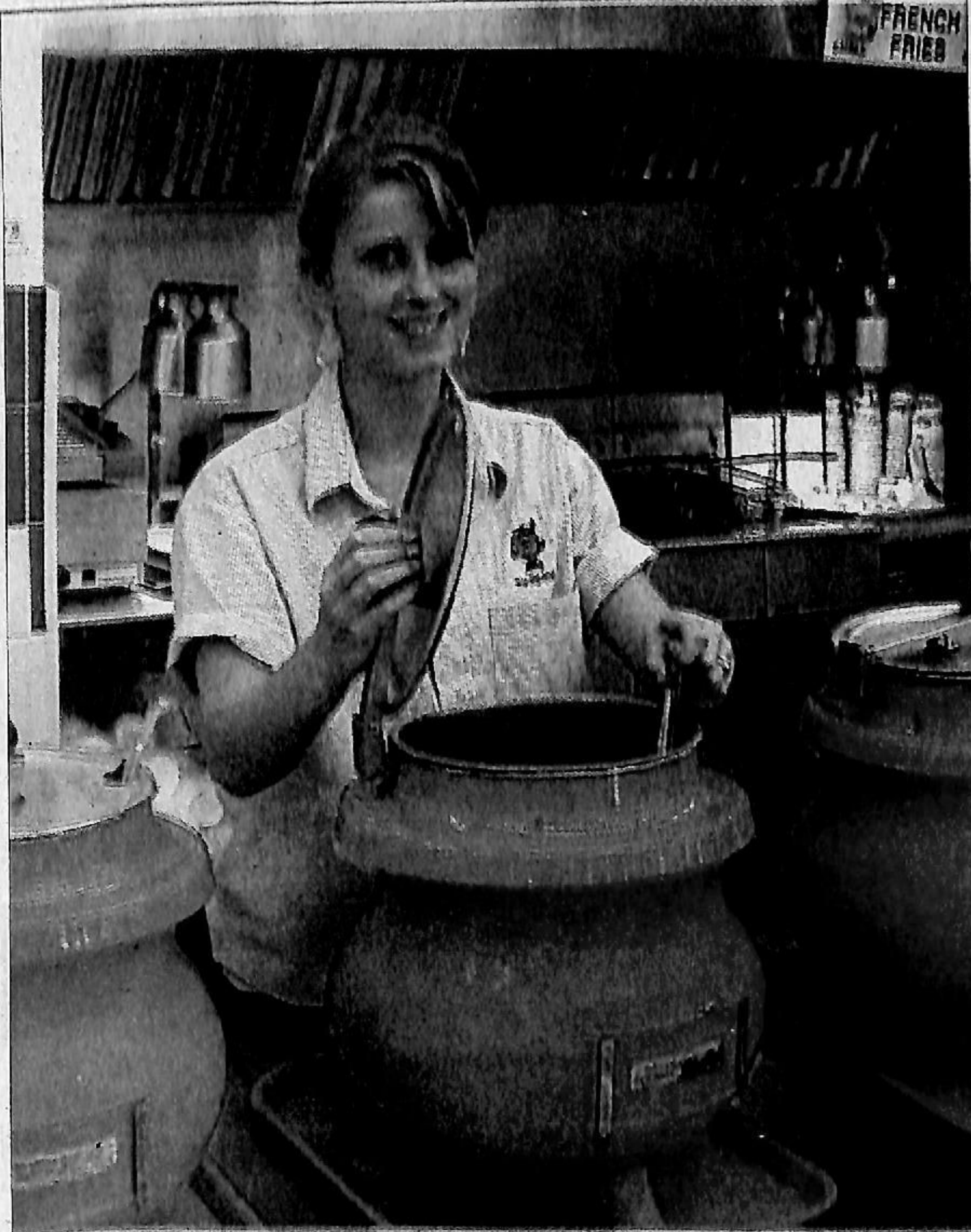
New apple-theme mini golf, bumper cars (new in 2004), the Big Apple Express Train, the huge gift shop and most of the restaurant are all add-ons. They join the goats and llamas in Animal Land. Still to come will be a parking lot on the north side of the building.

The original restaurant is now the 1,000 square-foot serving area. The building which houses it, the dining area and gift shop, is about 27,000 square feet. During the peak summer season there are about 50 on the payroll. That drops to about 20 after Thanksgiving. Either way, it is one of Cramahe Township's biggest employers.

Where once they sold a few pies and sandwiches, they now sell 150,000 fresh-baked pies per year to one million visitors. Pies are sold within 12 hours of baking.

The Assistant Manager says people come from as far away as Toronto and Ottawa with lists of pies they are buying for friends and families. Businessmen stop on their way by. Most of the Big Apple business comes off the 401-people arriving to dine indoors or out.

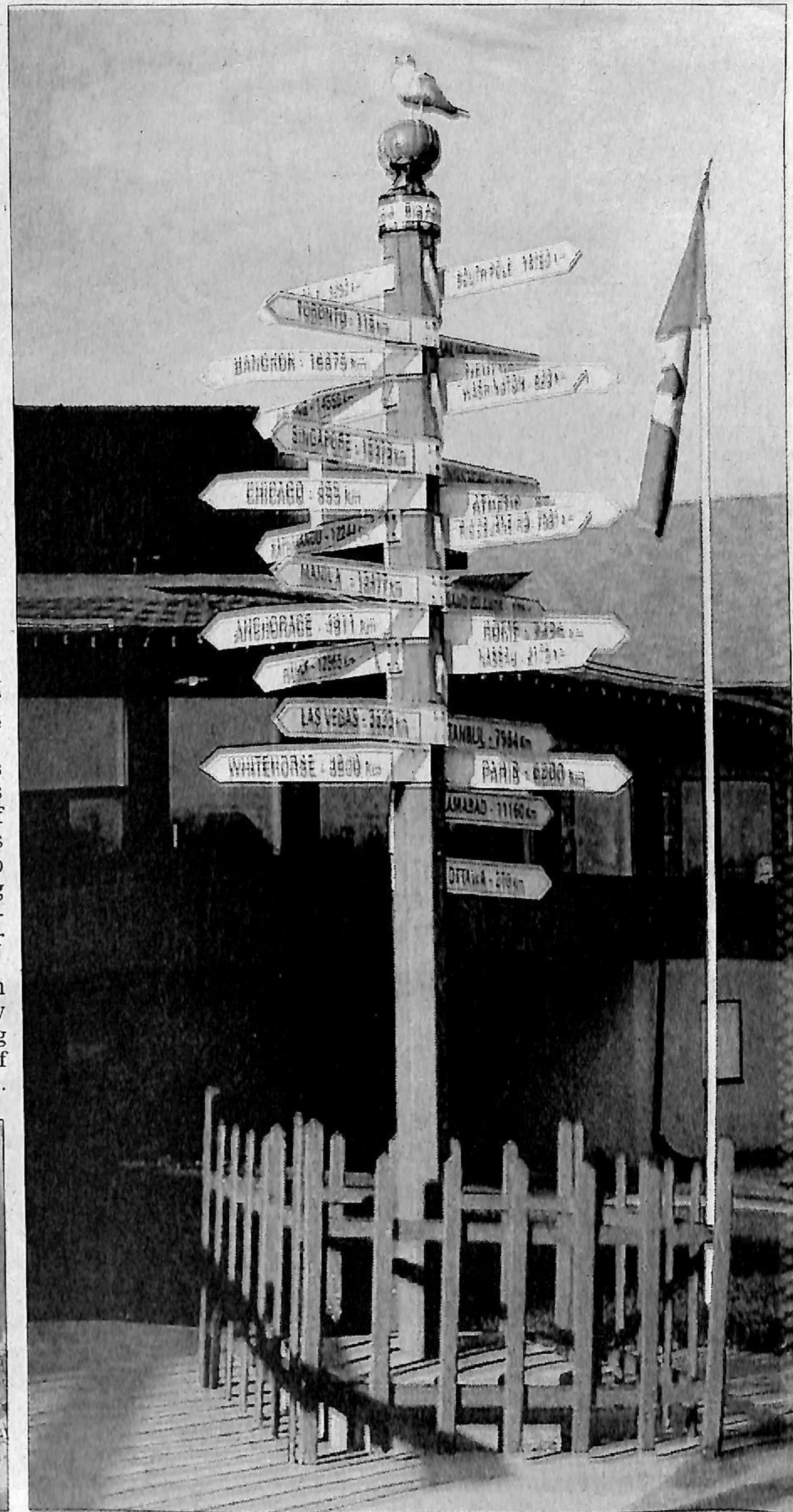
A lot of those visitors arrive on buses. On the morning of the day he sat down to talk about the Big Apple, a half dozen buses of tourists from France had been in.



Heather McNeeley ladles out some hot soup for a cool day.



Like rows of tiny redcoats, Sippy Cups ready to be filled.



You are here! Visitors to The Big Apple at Colborne, can place themselves at the crossroads of the world.