

LOCAL NEWS

# Councillor candidates outline

Colborne Chronicle Oct 26/10

Five candidates are vying for three Councillor positions for the new municipality of the Township of Cramahe. The five candidates at last Wednesdays all-candidates forum in Colborne spoke in order of numbers drawn.

**Mike Johnston**

"Everyone should stand for office once in a lifetime" Mike Johnston, a 20-year Cramahe Township resident, said he was once advised.

"I'm the only one up here with no record of public service," he noted.

After 30 years working for General Motors, Mr. Johnston has operated a marketing and consulting business specializing in automobile and sports marketing events.

"My business and strategic planning background can be put to good use" by the next council, he said.

"Cramahe Township will grow at an unbelievable rate in the next five to 10 years whether we like it or not," he predicted. "If we don't have a clear plan, others will impose ideas or perhaps legislate what does not reflect our consensus."

With a plan for the future, council will work "quickly, effectively and responsibly. Council needs to define its descriptors. For example are we primarily a bedroom community supported by agriculture or are we primarily agricultural supported by business, industrial and residential? Council must have a clear and defined vision."

Establishing a few primary initiatives and several secondary goals will give the next council direction.

"Not all initiatives need to be costly or profound," he noted. Living on two of the busiest rail and road routes in North America presents opportunities.

"Why can't we have a rail commuter stop in Colborne?" he asked.

"The municipality needs a proactive website," he said. "And we need to promote and facilitate farm gate retailing."

"We've been here 20 years and we're still considered newcomers," he said of his family's location at the north end of Cramahe Township.

**Ray Kelly**

Ray Kelly served 10 years on Colborne Village council "in the 70s and 80s", six as reeve.

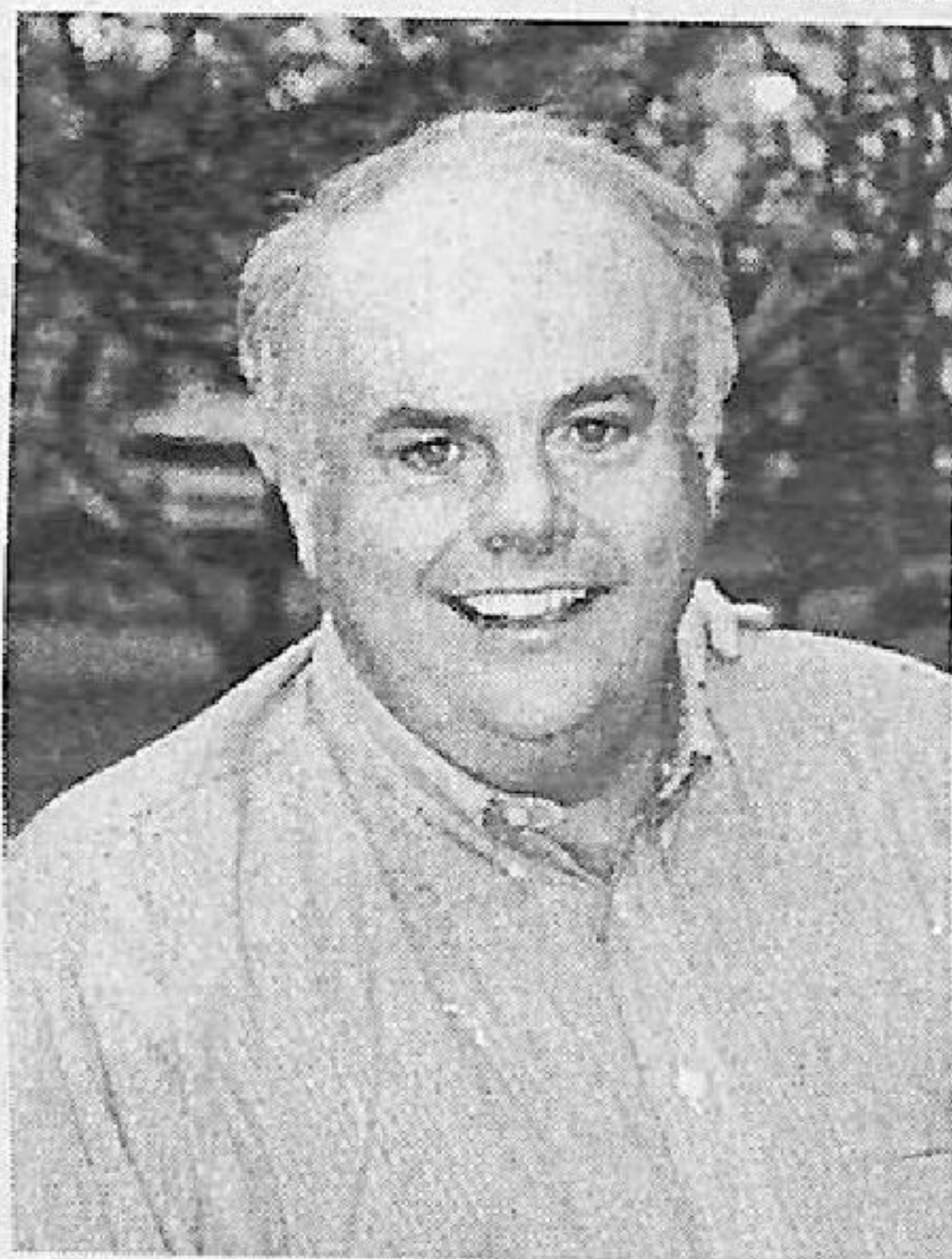
"Let's forget harking back to years gone by and maintain a vision of new perspective. But we must not forget that council

Municipal Waste Recovery Facility)," he said.

Rather than buy election signs that will eventually add to the waste going to the MRF, Mr. Kelly said he is donating \$100 to Community Care.

**Jane Boreham**

A retired bank manager, Jane Boreham has served two terms as a Colborne Councillor. She is active in numerous volunteer



Mike Johnston

activities including Community Care, Canadian Cancer Society, Northumberland United Way, the NHCC fundraising committee for a new hospital, the Colborne Curling Club and church.

She cited many initiatives that have been acted on the community: the new Colborne library, upgrading of downtown services, upgrading the Colborne municipal building, and a new Colborne fire hall.

"We have a program to improve the facades downtown, and a new arena is underway," she noted.

Active in the Northumberland Economic Partnership committee, she is fundraising to match the \$21,000 Rural Job Strategy funds, and has been active for the past council term is economic development committees for the county.

"As your elected representative, I will work toward a smooth transition (of the two municipalities). It's a natural fit. After amalgamation, I will work toward a plan or vision for our community. We must have constructive input from all area

**Carl Wilce**

A former Cramahe Township Councillor, Mr. Wilce has been "filling in" as Councillor since August this time around, filling a vacancy. He is a fourth genera-



Ray Kelly

tion Cramahe resident.

"I have always shopped in Colborne," Mr. Wilce said. As a vice chair of the Apple Blossom Tyme Festival, past president of the

we can prevent some of these things from happening," he said.

"We need to take care of our water. Water and air are the two most important things in life."

He supports the expansion of sewage services to the industrial park. "It's easy to spend money but to have to make it. We need a strong industrial area. We have a pretty fair industrial park now



Jane Boreham

but to hold it even, we need to expand, definitely, the sewage system.

"I love the land. You know, the first fair in Northumberland was where we are now building the arena. The second fair was where they are now building a new hospital (in Cobourg).

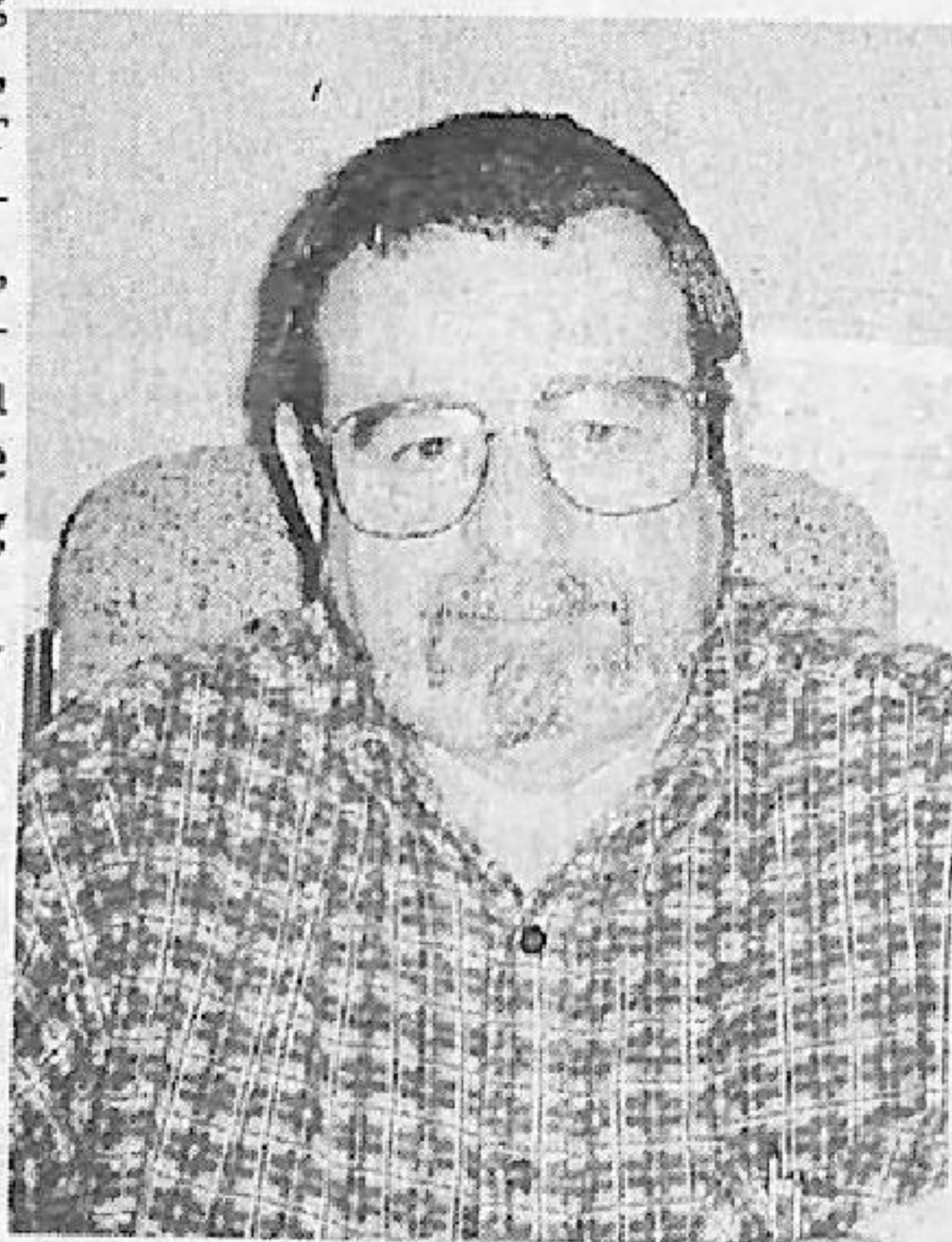
"I want to represent you on council. I will listen to your constructive criticism or your ideas

"My one dream is that we get to know one another. The municipality is 12.5-miles long and the people in the north hardly know the people in the south. A new community centre (at the arena) can draw the people together.

"I will try my best to work for the betterment of the community."

**Tim Post**

A nine-year Colborne Councillor, Tim Post noted a Post has been in business in Colborne for over 90 years, and politically involved for many of those years.



Tim Post



Carl Wilce

Northumberland Cattlemen's Association, member of Northumberland Ag Awareness committee, the township rec committee, and trustee of his church, he cited his public service record.

"A new arena is a lovely thing for our community. It will draw more people together, but we had to borrow \$2.5-million to build it. To lessen the burden (on the taxpayer), we need to fundraise" because an estimated five per cent of the population are having difficulty paying their taxes - and one per cent are unable, facing tax sale of their land.

"If we fun raise, then perhaps