

Nunavut Nunami", which, in English, means "Welcome to Iqaluit, Nunavut Territory"

The items on display came from many arctic communities like Broughton Island, Pongnirtung, Grise Fjord, Resolute Bay, Clyde River, Igloolik, Pond Inlet, Hall Beach, Iqaluit, Cape Dorset, Sanikiluaq, and more. The pieces on display were seal-skin gauntlets, sealskin kamiks (boots), argillite narwhale (argillite is a beautiful black stone), a drum dancer made of whale bone, a tapestry, argillite bears, a seal-skin kayak and kayaker, a ivory and antler dog team, an antler *inukshuk* (landmark), a lovely print of a woman with a baby in *amauti* (large pouch) which is carried on her back. Inuit tell me these keep both mother and baby very warm.

Miniature wooden *kamitiks* (sleds) giving detail how the wooden slats are fastened on to the runners, a lovely *tallee-layoo* (comparable to a mermaid) made of a green stone, and then the cheerful dolls dressed in colourful clothing. A most impressive display which gives the traveller a hint of what's to come during the forthcoming stay.

A twin-engine Hawker Sidley cargo/passenger plane holding 16 passengers continued the northerly trip to Igloolik. Paul waited for me at the airport and took me on his snowmobile to his house. This trip to his house was fortu-

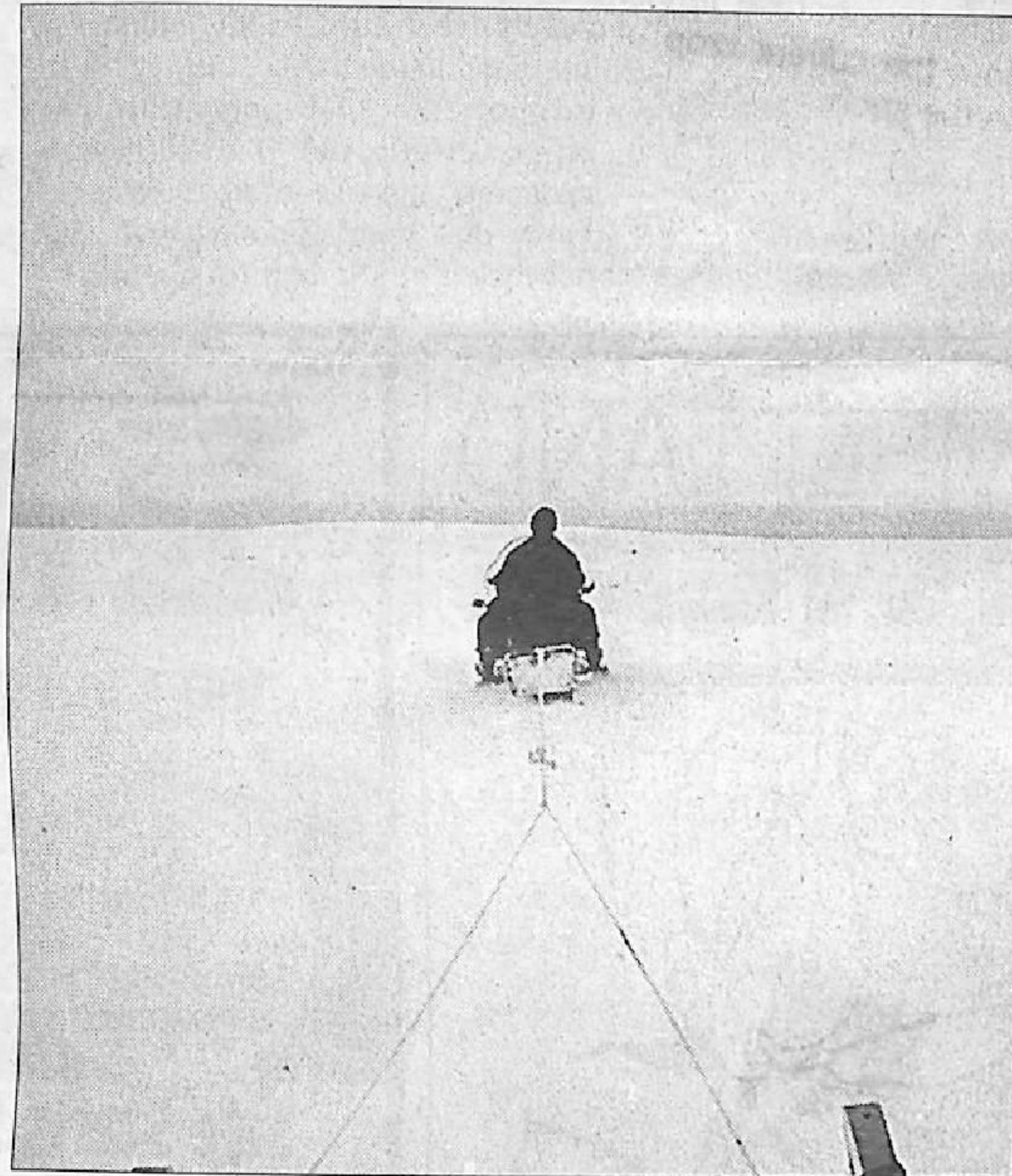
**Home, sweet home:**  
The community of Igloolik is home to an estimated 1,200 people, its size comparable to the village of Colborne.

in Igloolik does not have the expertise or equipment suitable to look after all patients.

During the day, I visited Paul's school, a recently-constructed building with the latest in teaching aids: beautiful class rooms and a large gymnasium. Paul introduced me to many of the students. What I noticed immediately is the infectious smiles of the children. All seemed eager to make my acquaintance.

Due to the days now having 24 hours of light, many students stay up all hours and play during the night which tends to make them late for school. It was explained to me that this is quite an understandable thing, it being an almost natural reaction to the winter with its lengthy nights and days when little or no light can be enjoyed.

It is now Friday afternoon.



**Rush hour:** Paul Wyminga heads out on the snowmobile, towing his father Pieter and supplies behind.

# The election that keeps on

COLBORNE CHRONICLE

June

BY MANDY MARTIN  
STAFF WRITER

Like the Energizer Bunny, the provincial election in Northumberland riding just keeps going, and going, and going ...

Voters woke June 4 assuming it was all over. Certainly, media reports indicated as much, but at the Brighton riding Returning Office, there were still two long days of counting, waiting, telephone calls and downright sleuthing before even a first count was completed.

Late Saturday afternoon, June 5, Returning Officer Winifred Platt emerged from a day-long lock-up with scrutineers and Returning Office employees to announce, "We have a first complete count of all polls."

Standing in the stifling office,

paper tapes of the initial counts in hand, Mrs. Platt added the caveat, "These have not been reconciled, or checked against lists. These do not present recounts - but it is, finally, a count."

The 4:30 p.m. June 4 tally indicated:

- Dr. Doug Galt (Progressive Conservative): 20,608;
- Carolyn Campbell (Liberal) 19,696;
- Murray Weppler (New Democratic Party) 2,820;
- Tom Lawson (Green Party): 1,185;
- Jim Psihogios (Family Coalition Party): 369; and
- Pascale Levert (Natural Law Party): 103.

"There will be changes in the numbers as we now go on to reconcile counts and ballots," Mrs. Platt

emphasized. "That will take another four days or so."

This provincial election has been fraught with challenges for the Returning Office. Two polls in Cobourg were an hour late, two more two hours late, opening the morning of June 3.

The two hour delay meant those four polls remained open after the scheduled 8 p.m. closure. As a result of the extended voting time in Northumberland riding, Mrs. Platt was authorized to hold results of the remaining 224 polls until after 10 p.m.

With poll results delayed two hours, missing poll results were not cause for concern until 1 a.m. June 4. At that point, Mrs. Platt and her staff began phoning the Deputy Returning Officers, attempting to have the missing poll results

reported.

Some DROs reported their totals directly to political party headquarters - not the Returning Office - and forwarded sealed ballot boxes to the Returning Office in Brighton. Under law, the Returning Office was not permitted to open the ballot box until Saturday, June 5.

There were reports of other polling stations sealing all paperwork - the voter's list, the actual poll count, plus the actual ballots - into the cardboard ballot box, leaving the Returning Office with no voting counts.

By 1:30 a.m. June 4, only 208 of 228 of the Northumberland polls had reported results. It quickly became apparent to the Returning Office the results from the missing 25 polls would be next to impossible to track down through the night.