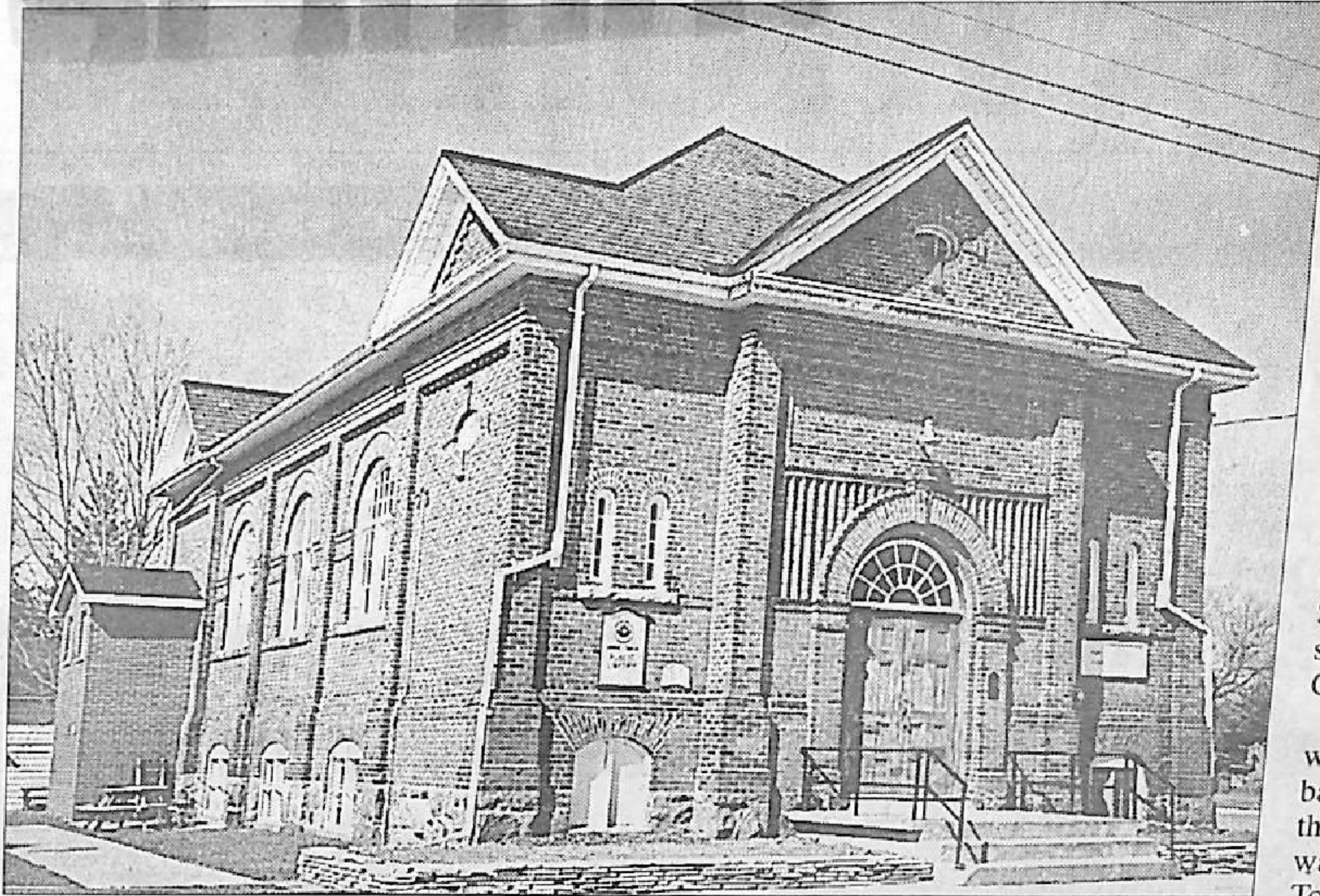


Cramahe Town Hall January Mystery Location



The Cramahe Town Hall, in Castleton, was built in 1893 at a cost of \$3,900.

PHOTO BY MARC COOMBS

grow after Joseph Abbott Keeler built the mill (now known as Purdy's Mill) in 1806. The town has had some different names over time such as Piper's Corners and Centreville.

Castleton initially grew as a result of a thriving lumber industry, the later by agriculture such as apples. At one time, Castleton had a population of 800.

The Town Hall, an historically designated building, was built in 1893 at a cost of \$3,900. The original land it sits on was bought from Jane Gaffield in 1892 for \$150.

The building was built with a community hall with a balcony on the main floor and the lower floor included a walk-in safe and jail cell. The Township purchased the land south of the hall in 1966 and the land is now used for the parking lot in 1983.

The Castleton Town Hall is now home to the township library, municipal offices and serves as the community hall for Cramahe Township.

See page 14



January Cramahe LACAC contest winner Lorna Houston, left, correctly identified the window depicted as that of the Castleton Town Hall. She receives her LACAC mugs from Keith Emery, Cramahe Township LACAC committee member.

PHOTO BY MARC COOMBS.

BY MANDY MARTIN
STAFF WRITER

The second "mystery location" in the monthly Cramahe Township Local Architectural Con-

servancy Advisory Committee contest is solved.

January's mystery location was the Township of Cramahe Town Hall in Castleton.

Castleton first started to


LITTLE LAKE PAVILION
Restaurant • Catering
WINTER SPECIAL