

Prince Edward County is concerned with the fur-trade. With the French, the fur-trade was always the predominating influence. Its interests were opposed to settlement. The Missionaries, eager for the conversion of the savages, dreaded the effect of French contact upon the Algonquins who had settled in the county after the Iroquois left.

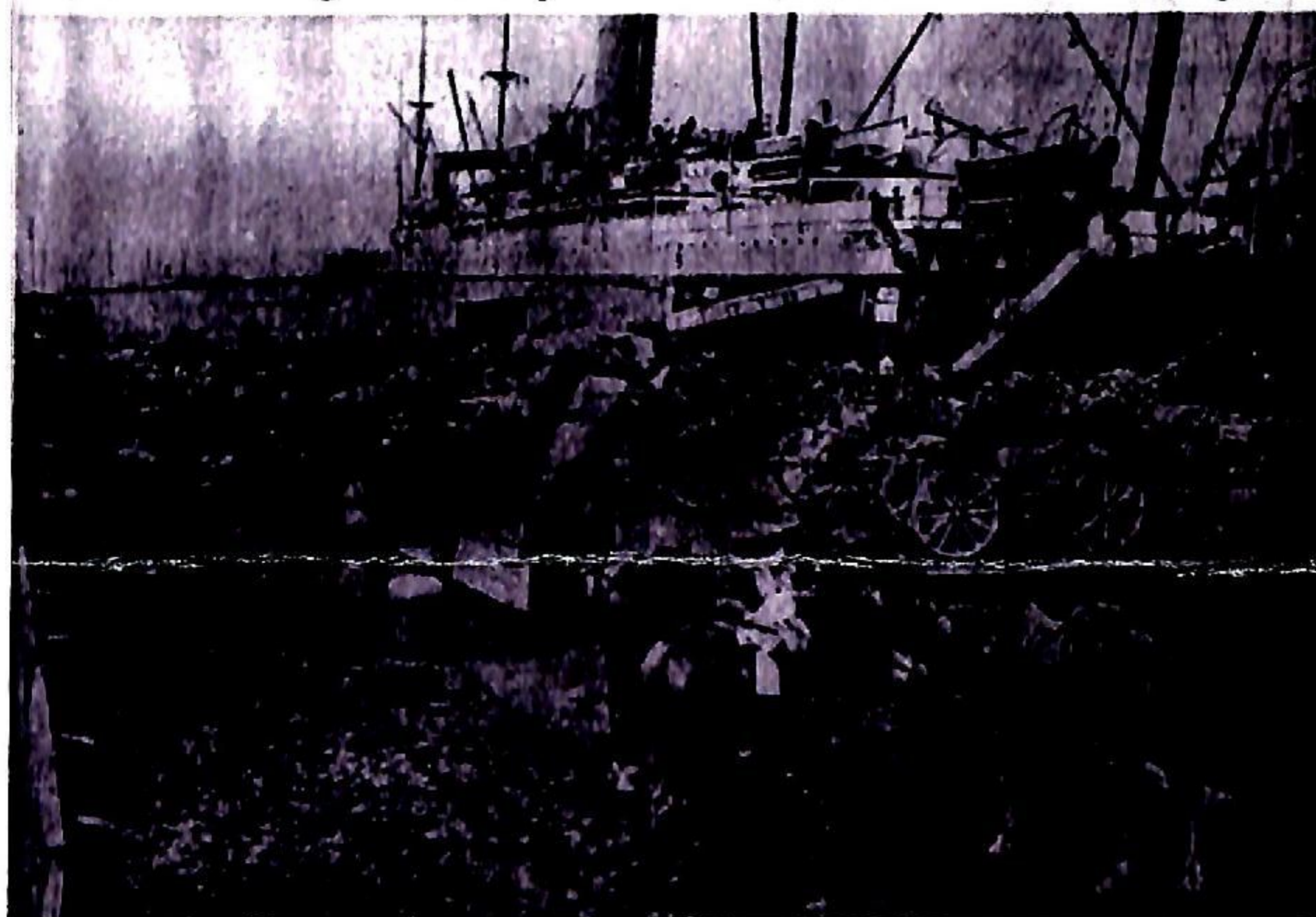
They, too, discouraged immigration. Thus it was that, when the United Empire Loyalists came, nearly a century and three-quarters after Champlain passed over the Bay of Quinte, its shores were still covered with primeval forest.

*(This article by Rosa E. Eaton is reprinted here as published in "The Picton Times" issue #48 dated Tuesday, June 29, 1937) - unedited*



We gratefully acknowledge the following content published in *The Picton Gazette* 'Golden Anniversary Issue' (July, 1969) Remembering the Great War - WWI

### ***Embarking For Europe - The Canadian Field Artillery***



*Photo Caption:* From Picton the first contingent went to Valcartier and from there... to Quebec prior to embarkation. By no means the smallest part of the difficulty of sending troops and equipment to Europe was the loading of the guns and horses of the Canadian Field Artillery. They are here seen on the quay preparatory to loading the transport "Saxonia".

#### **Ameliasburg**

Pte. G. Clinton Adams  
 Pte. W.J. Anderson  
 Pte. Chas. Ayrhart  
 Pte. Adelbert R. Beech  
 Pte. Clayton Belnap  
 Pte. Chas. Bowden  
 Pte. Edward Boyce  
 Lt. W.B. Ferguson, M.C.  
 Lt. L.M. Frederick  
 Pte. T.G. Hall  
 Pte. Ben Juby  
 Pte. Howard E. Parliament  
 Pte. Clifford Reddick  
 Pte. W.W. Weller  
 Pte. Leslie Young  
 Pte. Ernest M. Young

**The Names:** Roll of Honour - Our Splendid Dead  
 (Ameliasburg listed here)

As inscribed on the World War I Veterans' Memorial Monument Park,  
 Corner Main and Ferguson Streets, Picton.  
 Erected by the County Council 1920

*Passchendaele -Hooge - Arras - Sanctuary Wood - Courcellette - Amiens  
 St. Eloi - Mons - Vimy Ridge -Givechy - Lens - Ypres - Somme - Festubert  
 Bourion Wood - Douai - Cambrai*