

PRINCE EDWARD DISTRICT WOMEN'S INSTITUTE 1984 BI-CENTENNIAL PROJECT



DESIGN: QUEEN SIZE QUILT
COUNTY'S BI-CENTENNIAL LOGO
APPLIQUED

TOP BANNER: 1784 - 1984

OUTLINE OF COUNTY QUILTED
UNDER TOP BANNER

BOTTOM BANNER: PRINCE EDWARD
WOMEN'S INSTITUTE

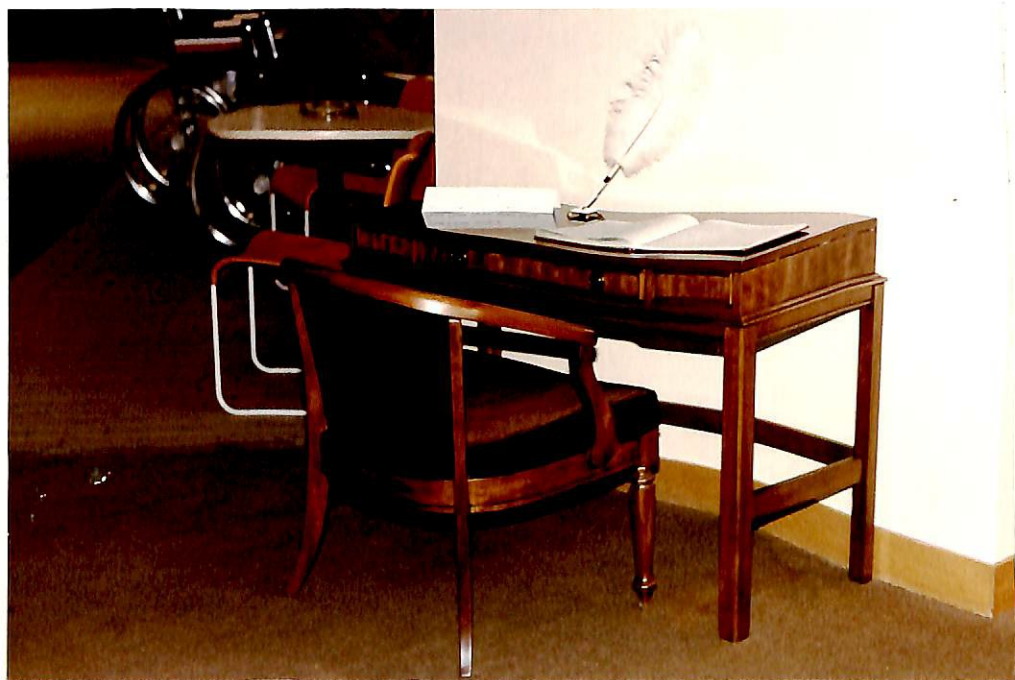
TRILLIUMS QUILTED IN CORNERS

DRAWN AT: ARTS & CRAFT FAIR
WELLINGTON
AUGUST 2, 1984

WINNER: MORNA MATTHIE
RR No 2, BLOOMFIELD

PROCEEDS FROM TICKET SALES
WENT TOWARDS THE FOLLOWING
PROJECTS.

*Photos by
Phyllis Lowe*



DESK & CHAIR PRESENTED TO "H. J. MACFARLAND
MEMORIAL HOME"



PHYLLIS LOWE, TED RUTTER, DISTRICT PRESIDENT
MARY LOU NORTON WITH "MICRO-WAVE" FOR PRINCE EDWARD
COMMUNITY CENTRE.



TED RUTTER, DISTRICT PRESIDENT,
MARY LOU NORTON WITH THE "THREE CHAIRS"
PRESENTED TO THE X-RAY DEPARTMENT OF
THE PRINCE EDWARD MEMORIAL HOSPITAL