

# Target date discussed for arena

Contractor, staff to pinpoint opening,  
DukeDome to be used to start season

**ADAM BRAMBURGER**  
STAFF WRITER

The DukeDome will live to see the start of another hockey season — but that shouldn't be cause for concern for supporters of the new \$12-million Wellington recreation centre.

Barry Braun, the County's commissioner of recreation, parks, and culture, indicated his staff was meeting with TaskForce Engineering this week to determine an estimated completion date for the purposes of booking hall and ice rentals for the new facility.

"We're thinking about the start of bookings, and for some of these things, especially community halls, they're done nearly a year in advance," he said. "We're meeting with the contractor and project managers to set a date to target."

With information from those meetings, Braun will be providing council with a status update on the project at its Jan. 26 meeting. Meanwhile fundraising for the community's anticipated \$1.5 million financial contribution is just below \$1.1 million.

At this point, Braun indicated there is no reason to believe the building won't open as anticipated in October. The project is about two weeks behind schedule due to some of

the winter weather the county has experienced, but Braun says it is expected that work can be caught up during the spring.

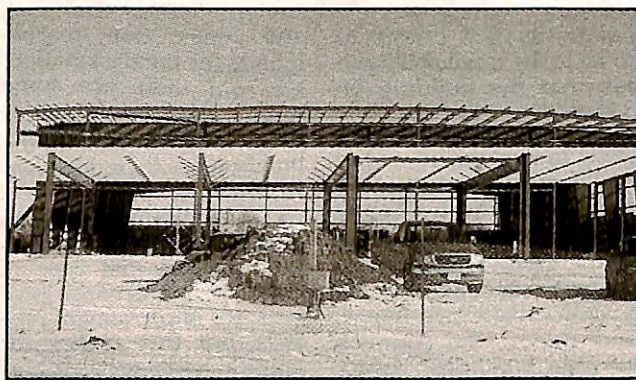
In past years, the County has had ice in Wellington in August and Braun says the existing DukeDome will open to serve the needs of users until the new facility is fully operational.

"We're going to have to operate the old facility at the start of the season, and the way it's looking, there will also be some overlap of the two facilities," Braun explained.

He said some time will be needed for staff to be trained to use some of the state-of-the-art automated equipment in the new facility.

Meanwhile, Braun said a substantial portion of the \$1.515 million renovations to the Prince Edward Community Centre in Picton will begin on the building's interior in March. Primarily, the community hall will receive a "significant retrofit" to modernize it, while some work has already been done upgrading the ice area of the 25-year-old facility.

Upgrades to the canteen, the lobby, and the flooring are also ongoing. Improvements to the parking area and the building's exterior will also be undertaken after the skating and hockey season ends.



**TAKING SHAPE** The basic structure of the new Wellington recreation centre is in place and construction has started on the south wall. (Adam Bramburger/Gazette staff)

## W.I. SHAKES UP 4-H FUND



The Prince Edward District Women's Institute recently donated \$5,000 to the Prince Edward County 4-H Association to support its fundraising drive for a new milkshake booth. With \$7,750 previously raised, the fund is now more than halfway to its \$20,000 target. The booth is a way for 4-H participants to learn and to serve. Here, 4-H Association president Lynn Ward (far left) and treasurer Sherrie Brown (far right) receive the donation from W.I. district president Margaret Squibb, left, and craft sale registrar Wilma McCagg at Picton Town Hall. The money was raised at the annual W.I. craft sale. (Adam Bramburger/Gazette staff)