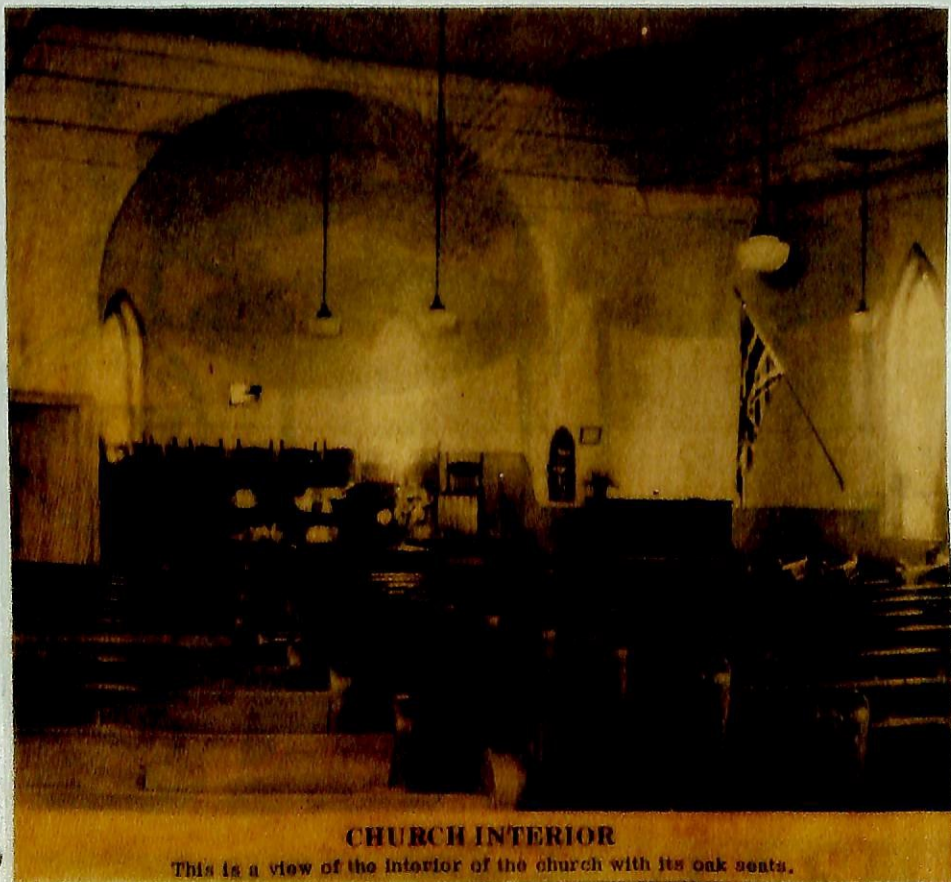




Albury Church in 1964. Picture donated by Mrs. Lorna Bowerman 1968



CHURCH INTERIOR

This is a view of the interior of the church with its oak seats.

**DEDICATION!**

**The ALBURY CHURCH**  
Will (D. V.) be Dedicated, on  
**WEDNESDAY, NOVEMBER 9th '98**

(Friday of Week Beginning)

**DINNER** will be served from 11 a.m. to 2 p.m.

**PUBLIC SERVICE,** Commences at 2 p.m.

At which the Rev. A. Campbell, of Belleville, will preach. This service will be followed by a **Platform Meeting**

W. W. Chown, Sec. Chairman

**TICKETS FOR DINNER, 50 Cents.**

**SUNDAY, NOV 13.** Service at 10:30 a.m. and 7:30 p.m. The service at 10:30 a.m. will be held at Albury Church and the service at 7:30 p.m. will be held at the residence of the Rev. W. J. Young, Belleville, Ill.

**SUNDAY, NOV 20.** Service at 10:30 a.m. and 7:30 p.m. The service at 10:30 a.m. will be held at Albury Church and the service at 7:30 p.m. will be held at the residence of the Rev. W. J. Young, Belleville, Ill.

**Special Music at all Services**

**W. J. YOUNG,**  
Belleville, Ill.

**NOTICE OF DEDICATION**

Mrs. Earl Boster, RR 1, Carrying Place, still retains the notice of dedication of The Albury Church, performed by Rev. A. Campbell, Belleville, on Nov. 9, 1898. Photo by M. Gosling