

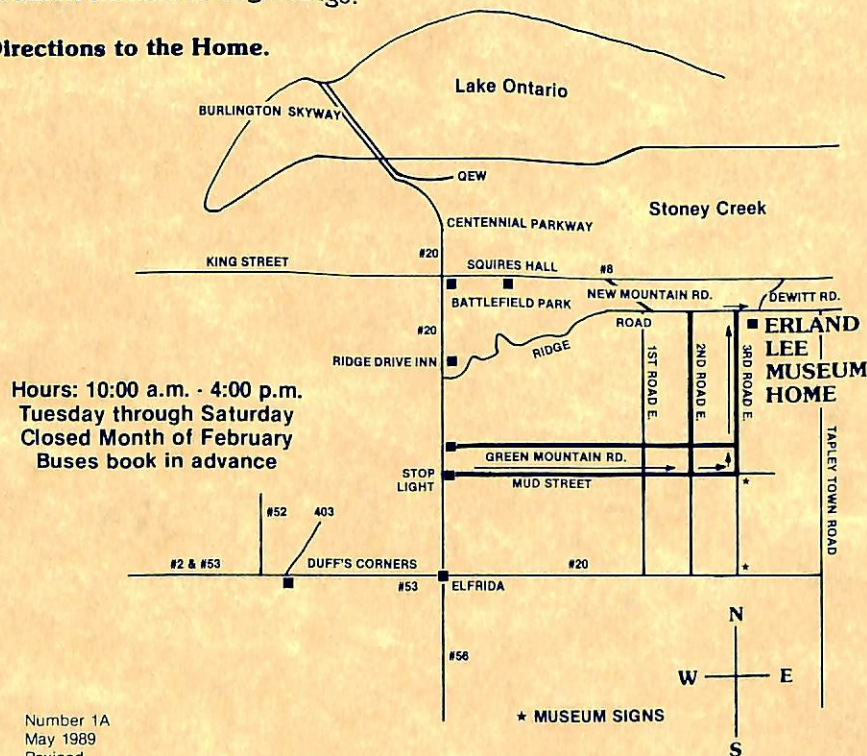
On May 28, 1961 a memorial plaque on a rugged granite boulder in front Women's Institutes of Ontario was unveiled. Through the efforts of the Federated dedicated at the Erland Lee Home by the Historic Sites Board of Ontario on October 1, 1967.

For many years it had been the hope of the Ontario Women's Institutes was presented to the Federated Women's Institutes of Ontario Board meeting from the Districts of Wentworth South and Wentworth North.

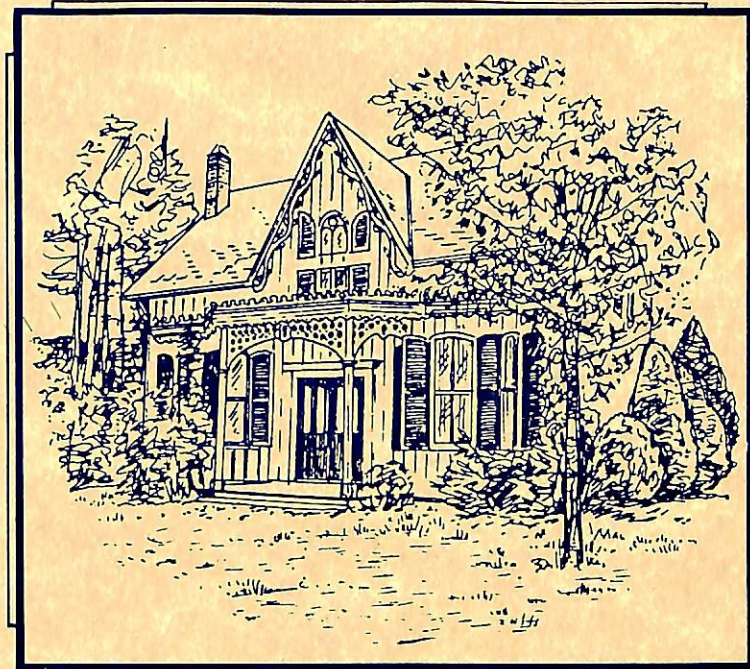
An option was taken by the Provincial Board of F.W.I.O. in October 1969 on the property on Lot 17, Concession 4, of the Township of Saltfleet, south side of Ridge Road, in Wentworth County. On June 15, 1972 the Erland Lee Home was officially purchased.

Thus for the Seventy-fifth Anniversary of the Women's Institutes the purchase of the Lee Home preserved one of the most beautiful vintage homes in Ontario for a useful and permanent purpose as a memorial of Women's Institute beginnings.

Directions to the Home.



Hours: 10:00 a.m. - 4:00 p.m.
 Tuesday through Saturday
 Closed Month of February
 Buses book in advance



Erland Lee (Museum) Home

Home of the co-founder of the first Women's Institute in the world, Mr. Erland Lee. It is owned and maintained by the Federated Women's Institutes of Ontario.

R.R. #1, 552 Ridge Road,
 Stoney Creek, Ontario, Canada
 L8G 3X4
 Telephone: (416) 662-2691