

## THERE ARE 47,250 WOMEN'S INSTITUTE MEMBERS IN ONTARIO

### What is the Women's Institute?

This is an organization of rural women from farms, villages and towns. It is non-sectarian, non-partisan and non-racial.

### What is its aim?

Our aim is to develop a more abundant life for the rural people of Ontario by

- (1) developing better homemakers
- (2) developing happier and more useful citizens
- (3) stimulating and training leaders
- (4) encouraging appreciation of the things near at hand.

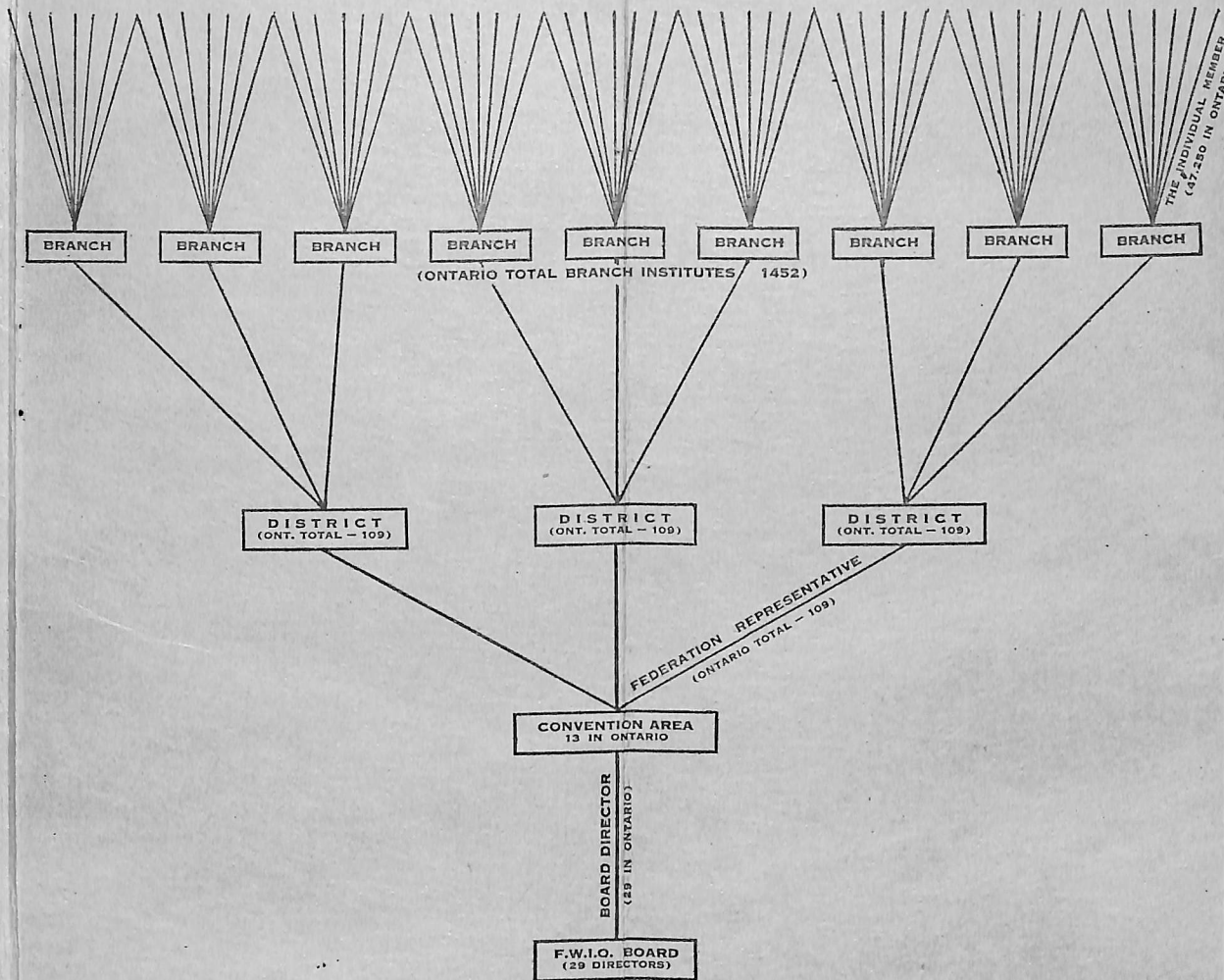
### How do you become a member?

By attending the nearest branch Institute paying the annual fee and taking an interest in Institute activities.

### How does the Women's Institute function?

All Women's Institutes in Ontario are federated to form the Federated Women's Institutes of Ontario (F.W.I.O.).

The diagram on pages 3 and 4 illustrates the relationship between the branch Institute, the district, the convention area and the Federated Women's Institutes of Ontario.



The Branch Institute is the first and most important part of the whole Women's Institute organization. From it has grown every part of the organization and to serve it all else exists.

By voicing her opinion and carrying a vote in the branch Women's Institute, the district and the convention area, the individual member in the organization is shaping the policy of the Women's Institute organization as a whole.

The Women's Institute organization is democracy at work.

### How is it financed?

1. By the annual 50 cent fee.
  - (1) 15 cents to support the provincial organization (F.W.I.O.)
  - (2) 5 cents to support the national organization (F.W.I.C.)
  - (3) 2 cents to support the international organization (A.C.W.W.)

2. By individual or branch contributions to support the district and convention area.

Each member of the branch Women's Institute is automatically a member of the district, convention area, provincial (F.W.I.O.), national (F.W.I.C.), and international (A.C.W.W.) Women's Institute organizations.