

ERLAND LEE HOME

Nestled among the stately pines on Ridge Road in Stoney Creek is this beautiful white frame house which was the home of the Lee family for six generations. Mr. and Mrs. Erland Lee and Adelaide Hoodless were co-founders of the first Women's Institute in the world. The house was purchased by the Federated Women's Institute of Ontario in 1972 following its declaration as an Historical Site by the Province of Ontario in 1967.

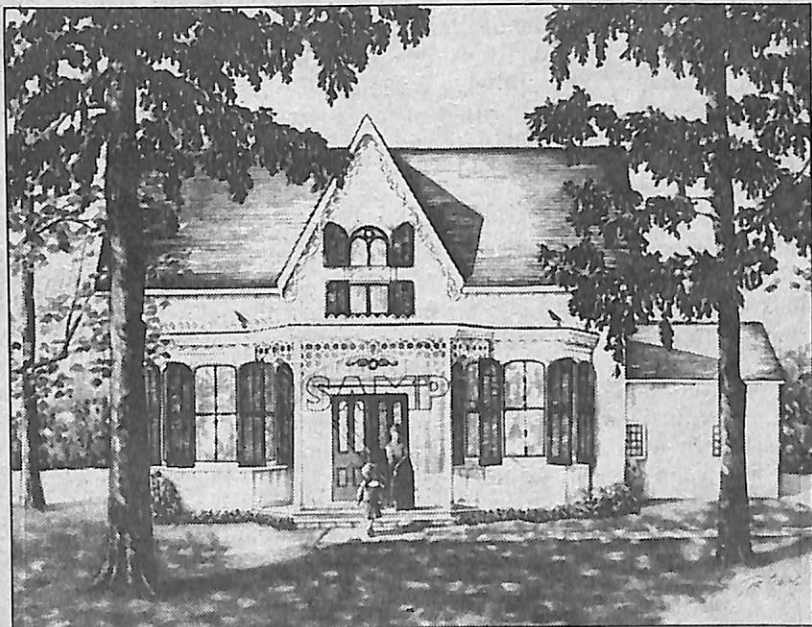


Image — 17' 75" x 13.75", \$85.00 - 475 s/n 47AP

by Jeannie Catchpole

available at: PARKWAY FRAMING

 ★ POSTER FRAMING
 ★ SPECIAL
 ★ Up to 24" x 36" Gold or Silver
 ★ 49⁹⁵
 ★

 ★ 1/2 PRICE ON NEEDLECRAFT
 ★ STRETCHING
 ★ With Frame Purchase
 ★

PARKWAY FRAMING

2500 BARTON ST. E., HAMILTON — 560-5770

(Parkway Plaza, Barton & Centennial, A&P-White Rose Plaza)

TOP QUALITY FRAMES AT BEST PRICES
 Guaranteed Workmanship — Fast Service



Mon.-Thurs.
 10-4:30
 Friday 10-8
 Saturday 10-4