

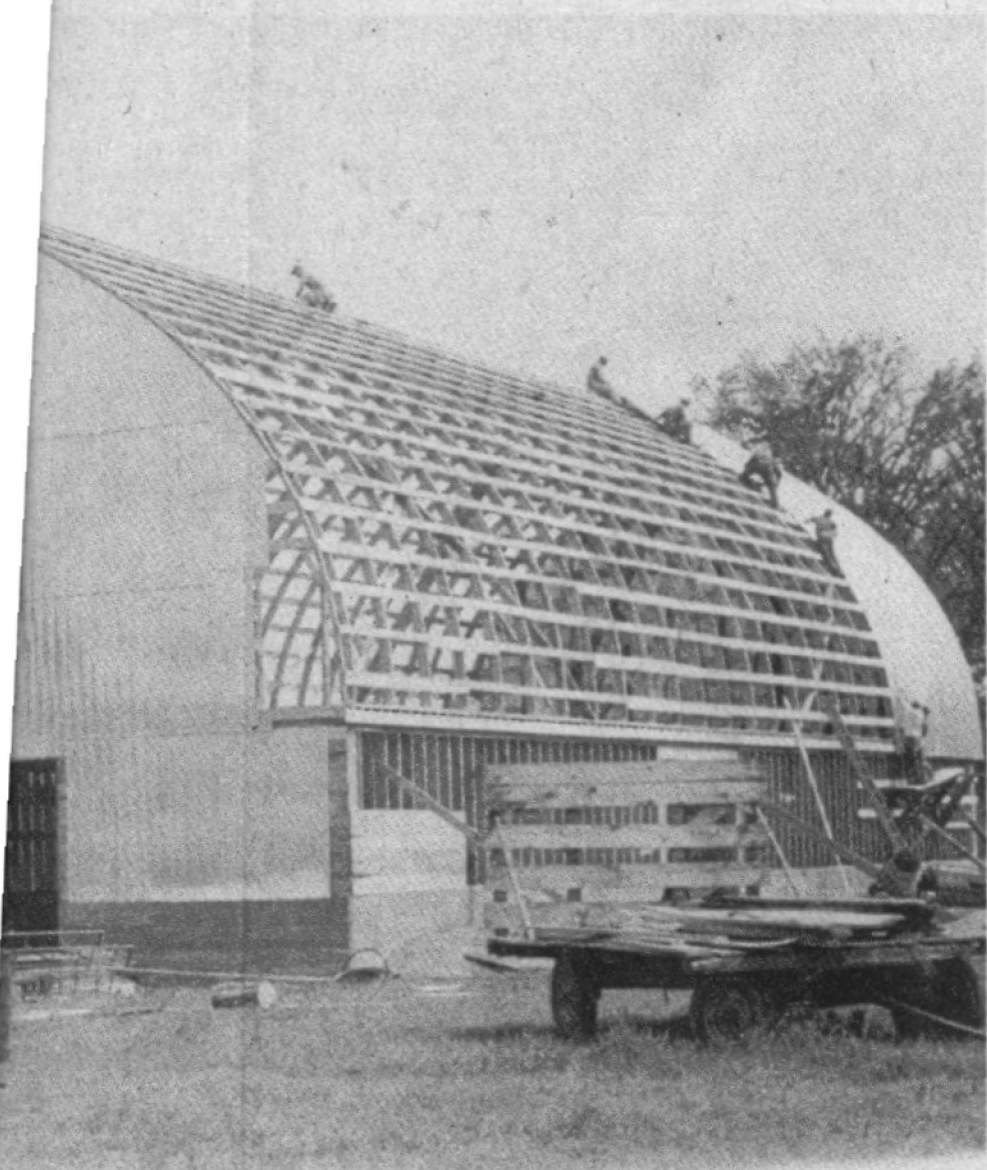


OTTOM, HAMMER  
Russett and Dan

Neill put the metal roofing in place.

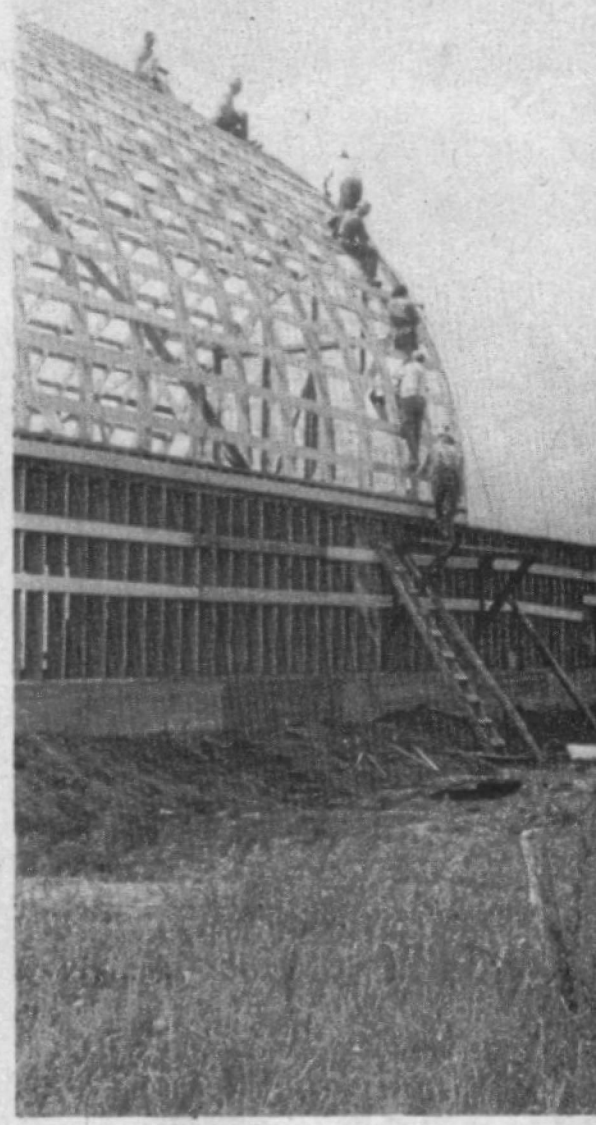


LAYING THE METAL ROOFING ARE, FROM BO  
top, Percy Runtz, right, Gerald Neill, left, Wilb  
Billy Laventure, Brian Box, and Blyth Russett.



THE BARN AS ONE  
side and Milton Neill.

squatted on the top of the barn, leads another group down the  
other side of the roof.



ART JAHN, RIGHT, AND DARYL NEIL PREPARE  
up a piece of metal roofing to the assembly line of  
workers, from bottom to top, Howard Mitchell, Fran  
Mike Laventure, Donald Roach, Frank Russett, Dan  
Milton Neill.