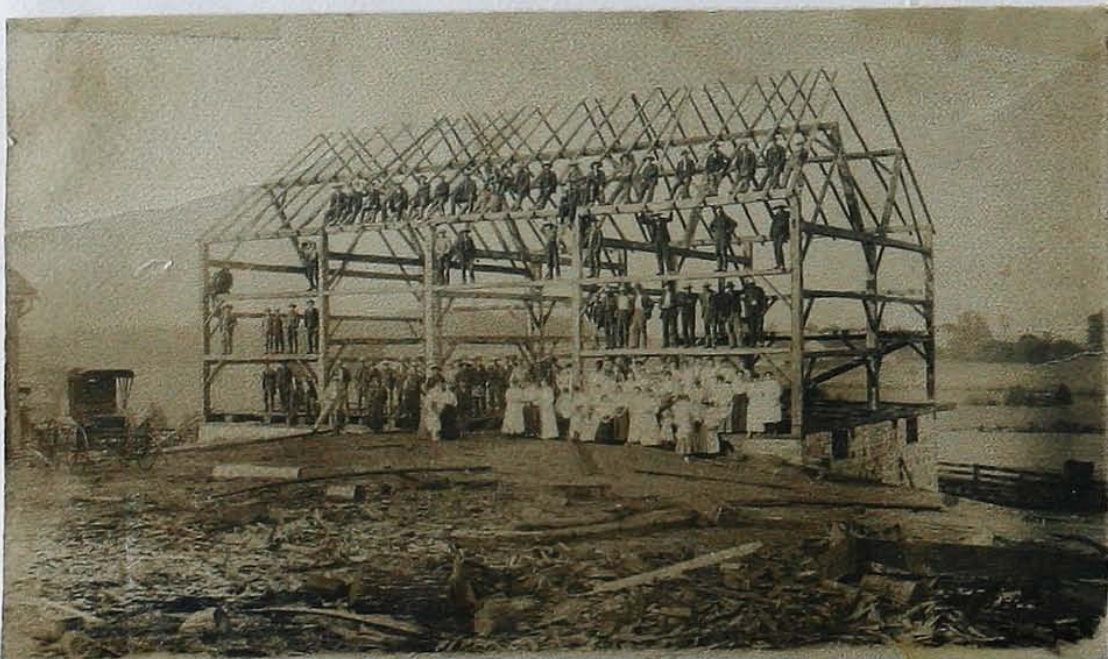


Lots 54 and 55, Conc. 2 SDR – Ian Wallace Farm

- January 18, 1856 – grant to Alexander Strong
- June 12, 1877 – Duncan McFadden and Alexander Strong
- July 24, 1877 – Alexander Strong Jr.
- March 29, 1895 – Samuel Strong and Alexander Strong Jr.
- July 18, 1901 – Alexander Strong and Solomon Schwandt
- June, 1945 – William Stewart Henry
- May, 1951 – Harry Tanner
- May, 1969 – Ian and Bernice Wallace
- 1994 – Joseph W. and Marlene Montag

Allan and Joan Poechman rented the house from Harry Tanner after their marriage in 1957. They lived there until 1961 when they bought Allan's parents' farm lot 66, Conc. 3 SDR.



Barn Raising at
Solomon Schwandt's
1905