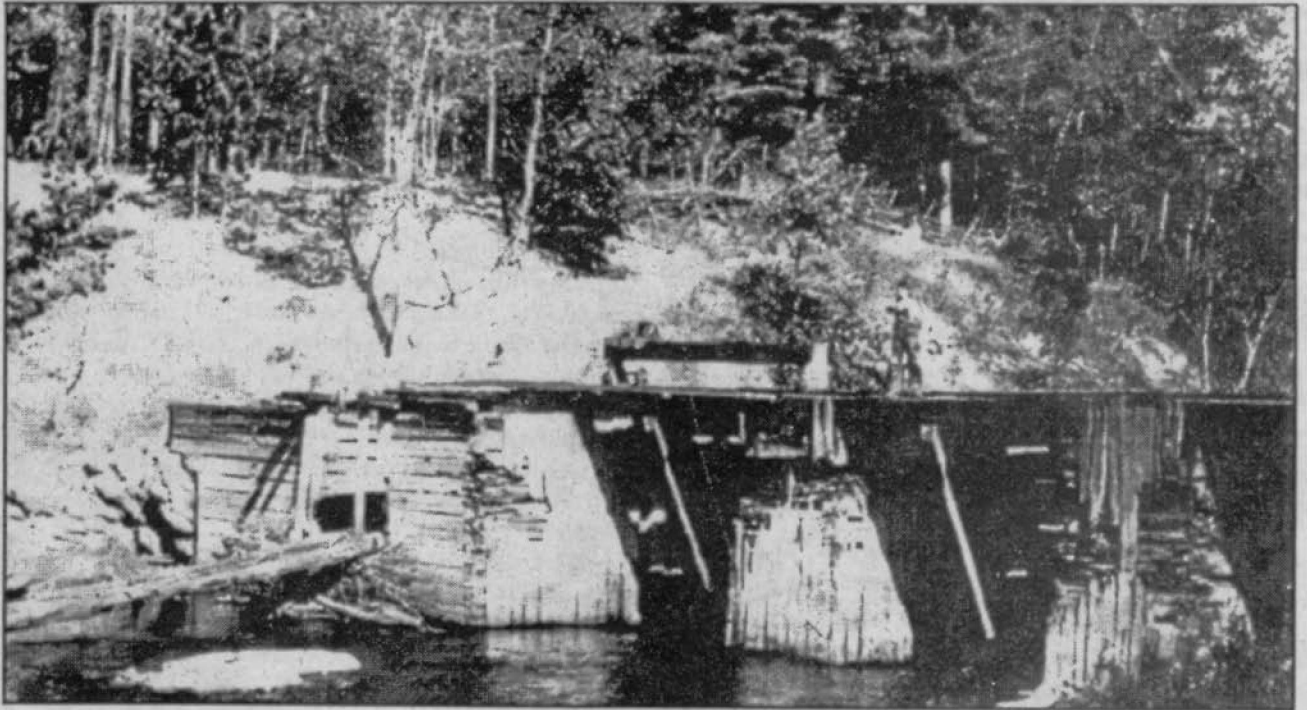




Serving their Renfrew neighbours

Bill Wallace and Noble Anderson drew wood to Renfrew for many years along the second line. They had many Renfrew customers and had contracts to fill the train flat cars that took mainly body maple. They made two trips a day, leaving in the morning before daylight and returning after dark. Many school children from Renfrew and the second line got a ride on the empty sleighs on their return trips. Adults who were walking along on the road were not offered a ride. (Information and photo from Horton, *The Story of a Township*.)



The First Chute

The dam at the first chute on the Bonnechere River 1909. In 1911 the Town of Renfrew purchased property at the first chute. It was taken over by the Renfrew Hydro Commission in 1945. The dream of a hydro generating station being built there has not yet materialized. There is a small park on the south shore, and the swift water below the chute is a popular fishing site. (Information and photo from Horton, *The Story of a Township*, by Doris and Campbell Humphries with the Castelford Women's Institute.)