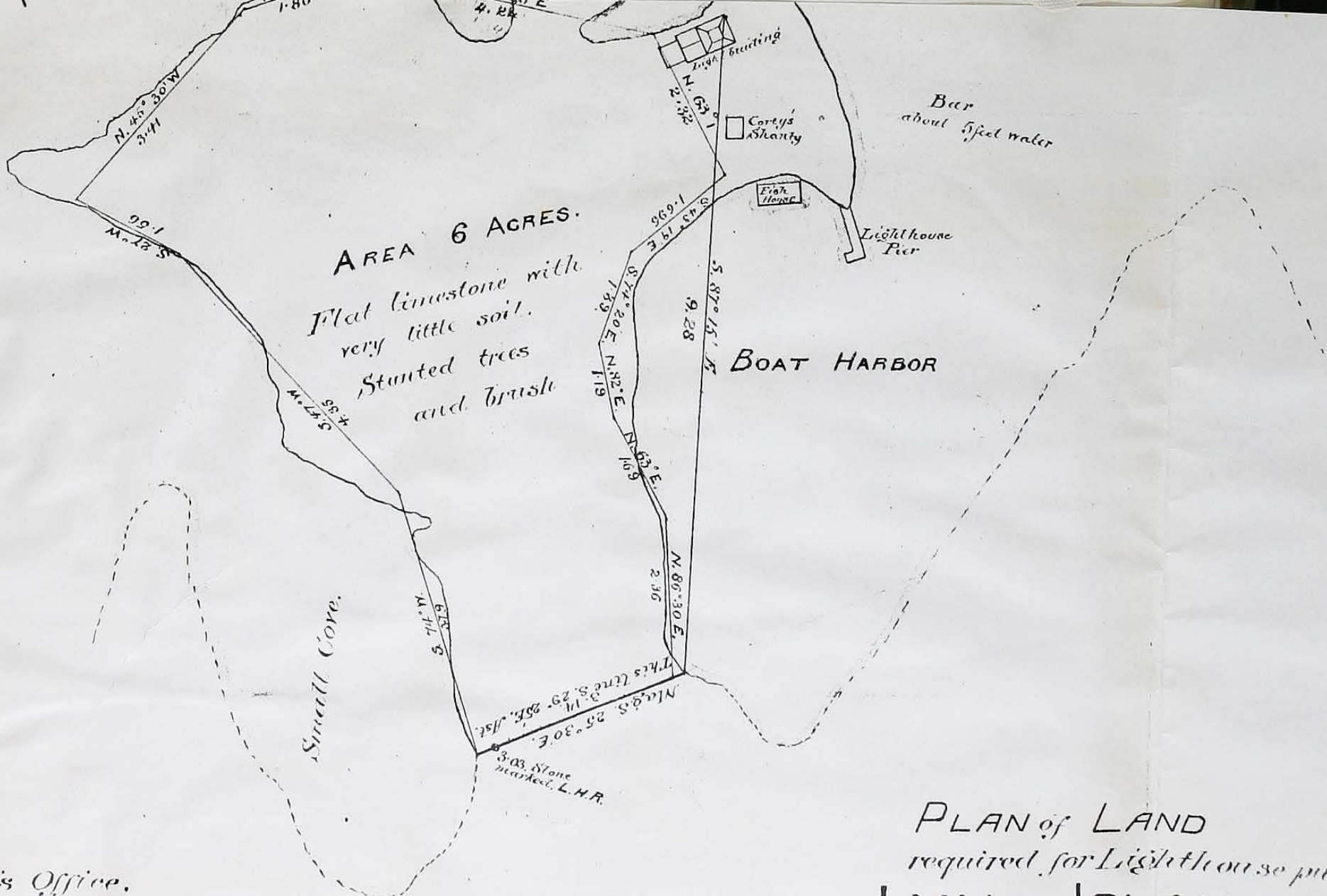


L A



AREA 6 ACRES.

Flat limestone with  
very little soil.  
Stunted trees  
and brush

BOAT HARBOR

Small Cove.

PLAN of LAND  
required for Lighthouse purposes.

on **LYAL ISLAND.**

**LAKE HURON.**

Surveyed by  
W. P. Anderson,  
Engineer of Dep't of Marine  
15<sup>th</sup> July 1881

Engineers Office,  
Department of Marine  
Ottawa. Nov. 1881.  
N<sup>o</sup> 2339.

Still property of  
Canadian Government 179  
(6 acres)

V1-360