

Women's Institutes

Bruce County District

The 4th annual meeting of Bruce County WI was held in the Elmwood Community Centre on Thursday, May 24, with host branches Arkwright, Belmore, Bervie, Bluebell and Brant Greenoch. Theme for the day was "appreciating the great outdoors."

President Linda Freiburger presided and conducted the meeting. Belmore branch was in charge of registration and 119 members attended.

Pennies for Friendship totalled \$1,419.30. Doreen MacAdam ratified the district directors for the coming year. Minutes of the 2000 financial statement, financial examiner's report, donations and correspondence were all presented by secretary treasurer MacAdam.

Committee reports were given by PRO Pat Calhoun. PAC representative MacAdam gave the report from board meeting. The board office will be open Monday, Wednesday and Thursday from 9 a.m. to 4 p.m.

Prizes will be awarded to branches getting the most new members. The ACWW convention to be held in Hamilton in June has 696 full-time delegates registered.

Brant Greenoch told the group of a project they are advertising of a medical vial with your 911 number and a list of medications you are taking plus any other health problems. They presented each branch with the information. Clark Birchard, who started the Outdoor Education Centre 28 years ago in Wiarton, was guest speaker. There are 325 acres of land and Grade 6 students are there for three days for the outdoor environmental studies. The Bruce Grey Foundation is replacing the old buildings with new ones at a cost of \$2.5 million. Sixty-five schools are now attending from Grey and Bruce.

The Bruce County WI has been selling tickets on four draws with the proceeds going toward the new education centre. The winners were as follows: Garden Arbour: Les Monkmon, Kingston, Ont.; \$50 gift certificate: Pat Noble, RRI Mar; Tartan Doll: Mike Wendt, Mildmay; Institute Rose: Judy MacKinnon, Paisley. Thanks to everyone who bought tickets for this very worthy project.

Bluebell Branch had the ladies called The Golden Tones from the Wiarton area entertain with their music.

Vicki Braeker, area president, installed the offices for the coming year.

Dates to remember: Grey Bruce Area Convention, Durham - Oct. 23, Bruce County Rally - Oct. 2 in Tiverton.

Bervie W.I.

The Bervie Women's Institute met in the hall on Wed., Oct. 3. President Sylvia Hasbury presided. The minutes were read and approved and roll call answered.

There will be a quilt auction in Flesheron and the area convention will be held in Durham on Oct. 25. Bervie W.I. is having a bazaar and tea on Oct. 27. The next card party will be Oct. 22 at 7:30 p.m.

Betty Anne Thompson gave a report on the rally held in Tiverton.

Norma Hartwick was convener and Lyla Allen held Fun Time. Show and Tell was by Sylvia Hasbury.

The meeting was closed and lunch was served by Virent Thompson and Mildred Griffith.

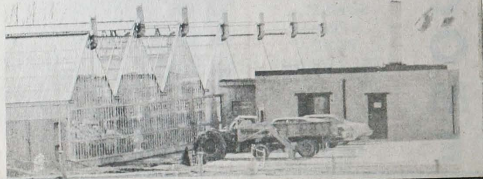
BRUCE AGRIPARK phase 1: productivity a joint venture of... test

Ontario imports approximately 80 percent of its energy requirements. Rising oil prices and diminishing supply makes it increasingly important to use energy more efficiently.

There are a limited number of ways Ontario can assure it has enough energy: by reducing demand; by expanding Ontario's native energy resources; by developing alter-

native sources of energy and by using existing energy more efficiently.

Presently at the Bruce Nuclear Power Development, only one-third of the heat produced by the reactors is used to produce electricity. The remaining two-thirds of this heat energy is absorbed by lake water, that is circulated for cooling purposes and returned to the lake. A large part of this heat energy is in effect being wasted.



AGRI PARK... THE ANSWER...

The full-scale Bruce AgriPark proposed to use this presently wasted heat energy for warming greenhouses as well as warming a growing medium for fish farming.

Already constructed is a 1-acre prototype greenhouse for testing and monitoring purposes. The results of the two crops of tomatoes and cucumbers over the past fall, winter and spring growing seasons have been exceptional.

The 1-acre prototype is located on the 5th Concession of Kincardine Township approximately 1 mile north of Kincardine. The partnership known as the Bruce AgriPark Joint Venture, which includes Huron Ridge Limited, The Consumers' Gas Company, the Ontario Energy Corporation, TransCanada Pipelines Limited, Anderson Flax Products Ltd. and Weston Energy Resources Ltd., recently completed the purchase of the 300-acre Mitchell farm so that construction on the full-scale greenhouse can soon begin.

