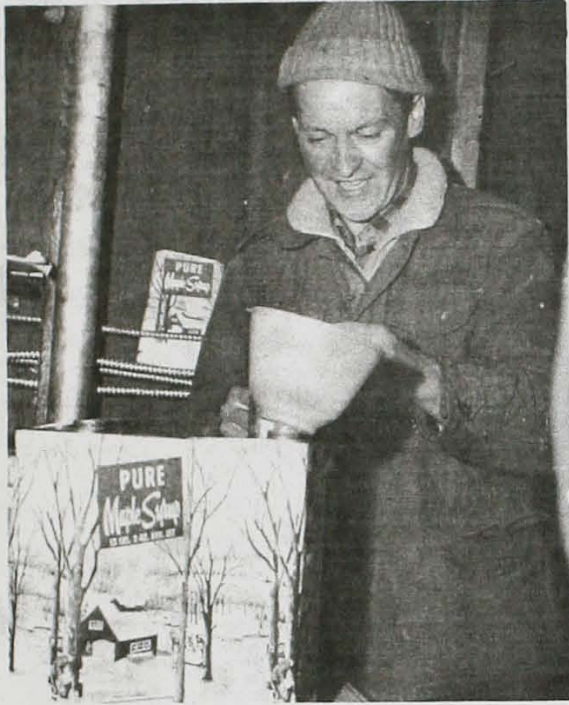


APR 15/69



JIM RAE checks the quality of a batch of maple syrup with a thermometer as the gallon tins are filled with the delicious products at the Belmore Syrup Festival.—A-T Photo.

APR 15/69



HAROLD GRANT of Bluevale had to restrain himself from droolling slightly as he gets his plate filled with pancakes and

Belmore Syrup at the festival on Saturday. The cooks are Glenn Appleby and Mabel Dunkin.—A-T Photo.

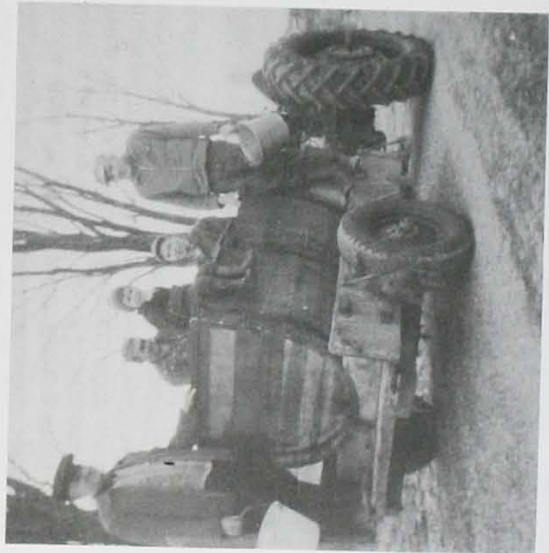
*Mr. and Mrs. Mac Metcalfe
request the honour of your presence
at the marriage of their daughter
Grace Helen
to
Mr. John Peter Mulvey
on Saturday the first of November
nineteen hundred and sixty-nine
at two-thirty o'clock
St. Matthew's Lutheran Church
Mildmay, Ontario*

*Reception at 8:30 p.m.
Mildmay Community Centre*

BELMORE MAPLE SYRUP FESTIVAL

In 1968 the Belmore Community Centre was in need of a new roof. While Belmore is not incorporated as a municipality, it is a distinct community and wanted to continue to maintain its own Community Centre. The idea of a Maple Syrup Festival to raise the money for the needed repairs was discussed by Jim Renwick, Mac Inglis, and Walter Renwick. After a Sunday afternoon drive with his neighbour Bruce Harkness, to count the maple trees along the roadside in the area, Walter suggested that a Maple Syrup Festival would be a way to raise money for the project. Planning for the event was a "shot in the dark" because, of course, no one knew what to expect. But enthusiasm is contagious and families of the area were soon washing up sap buckets and tapping their trees.

The sap was delivered to the 'Sugar Shanty' where boiling continued day and night as necessary, to keep up with the supply of sap. The evaporators, one owned by the Renwicks and one borrowed, were fueled with wood which was also gathered and cut by volunteers. The committee for the first Belmore Maple Syrup Festival included Walter Renwick as Chairman, Lavonne Ballagh as Secretary-treasurer, Bruce Harkness, Mac Inglis, Bill Mulvey and Jim Renwick.



1968: Gathering sap is (L to R) Elmer Zinn, Elmer Jeffrey, Marilyn Ballagh, Elmer Ballagh, Harvey Ballagh.