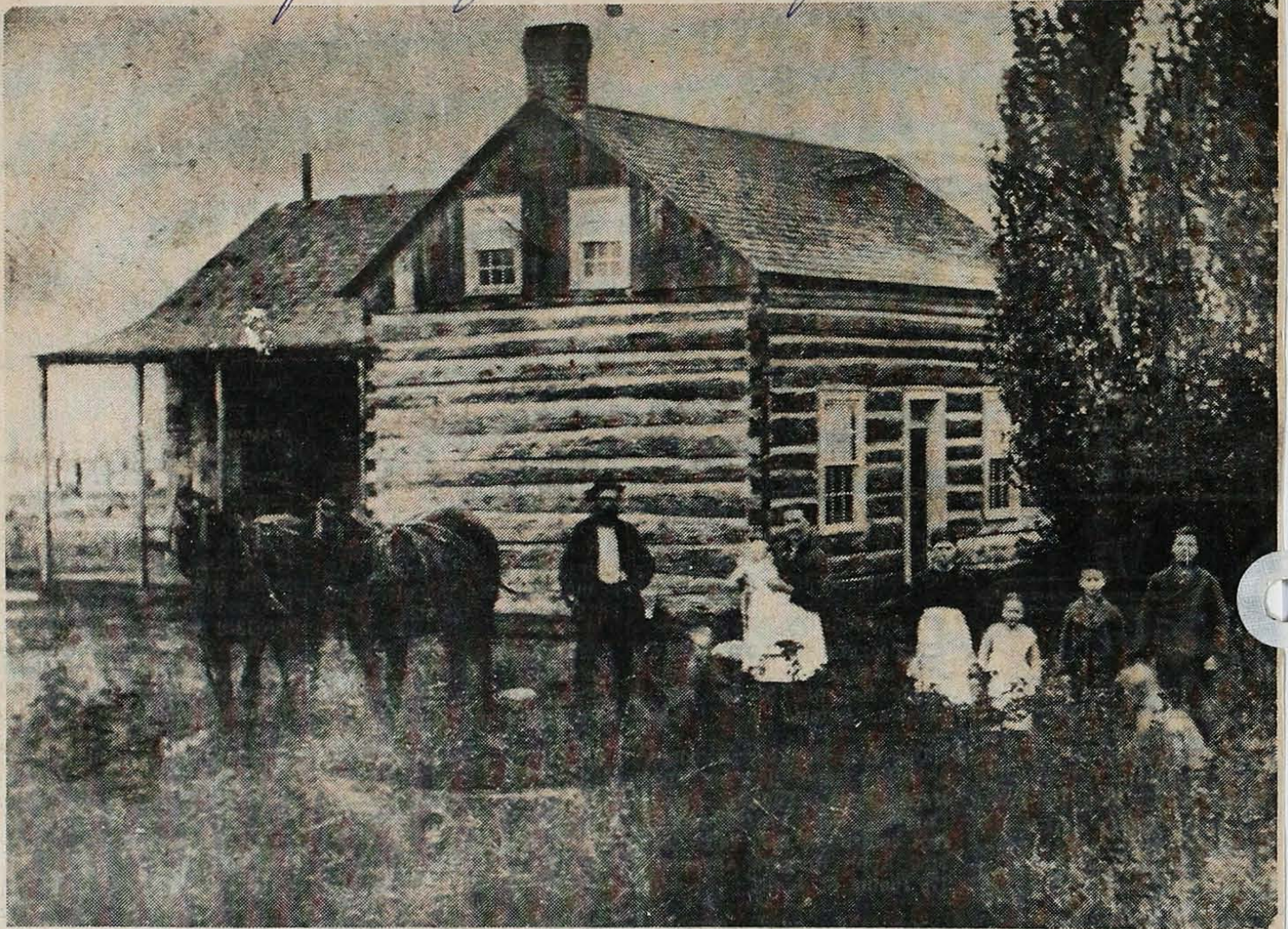


Taken from Renfrew Advance Jan. 2, 1964



Days gone by — This tintype photograph of the Campbell homestead taken about 1880 was enlarged for reproduction in The Advance. Standing in front of the log home are Duncan Campbell, his wife, a

John P.

hired girl, Miss Lizzie Campbell and P. M. Campbell. The other person is unknown. *John P.* Campbell who settled the farm came to Renfrew from Perth and settled near the hardwood bush he had seen from the Pinnacle.